

HIDING IN PLAIN SIGHT

MULTI SPECTRAL CAMOUFLAGE SYSTEMS



WHY BCB?

Cardiff-based BCB International Ltd are long-established manufacturers and suppliers of military survival and protective equipment.

Our range of face paint and camouflage nets have been standard issue to generations of British and NATO forces to help them stay concealed from the enemy in all environments.

The company is now offering a new range of Multi Spectral Camouflage Systems (MSCS) and concealment suits to complement its established range.

Adversaries use a variety of sensors to detect and target our troops, their equipment and installations.

Our MSC can change battlefield dynamics by blocking or degrading the effectiveness of opponents' reconnaissance, surveillance and target-acquisition capabilities.

Our systems are the result of extensive research and development work with the latest fabrics, materials, and coatings, as well as multiple field trials.

Our systems and camouflage suits conceal equipment and personnel in the visual, infrared and thermal spectrums.

BCB have been providing camouflage systems to the UK MoD for over 40 years



CONTENTS

THE ART OF CAMOUFLAGE

MK 7 3D SYSTEM

MK 8 3D ENHANCED SYSTEM

MULTI SPECTRAL 2D CAMO SYSTEM

A SYSTEM, NOT JUST A NET

PATTERNS FOR ANY OPERATING ENVIRONMENT

CONTINUOUS ADAPTIVE INNOVATION

THE SCIENCE OF CONCEALMENT

PERSONAL CAMOUFLAGE SYSTEM

CAMOUFLAGE CREAMS

CUSTOM CAMO: DECOYS

CUSTOM CAMO: DUMMY TARGETS

CUSTOM CAMO: VEHICLES

WE'VE GOT YOUR BACK

Sun Tzu, THE ART OF WAR

"The opportunity for defeating
the enemy is provided
by the enemy themselves "

AN ANCIENT PHILOSOPHY A MODERN SOLUTION

"Conceal you dispositions, and your condition will remain secret, which leads to victory; show your dispositions, and your condition will become patent, which leads to defeat."





THE ART OF CAMOUFLAGE: REDUCING SHAPE - SHINE - SHADOW - SILHOUETTE

One of the imperatives of current military doctrine is to conserve friendly strength for decisive action.

Camouflage and concealment helps prevent an enemy from detecting or identifying friendly troops, equipment, activities, or installations, it degrades the effectiveness of enemy reconnaissance, surveillance, and target-acquisition capabilities.

Skilled observers and sophisticated sensors can be defeated by obscuring tell-tale signatures of units on the battlefield. Preventing detection impairs enemy efforts to assess friendly operational patterns, functions, and capabilities.

US Army ATTP 3-34.39 (FM 20-3) / MCRP 3-17.6A - Camouflage, Concealment and Decoys.

“In making tactical dispositions, the highest pitch you can attain is to conceal them; conceal your dispositions, and you will be safe from the prying of the subtlest spies, from the machinations of the wisest brains”

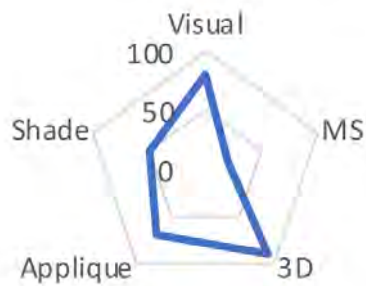
Sun Tzu, THE ART OF WAR

MK 7 3D SYSTEM

BCB Mk 7 3D Net System is in service with UK MoD and armed forces around the world. Manufactured in the UK, it is the standard by which other camouflage systems are judged. It is light, robust, cost effective and easily deployed.

Mk 7 provides excellent lightweight, visual and NIR concealment and can be tailored to provide anything from personal camouflage and vehicle nets to concealment for large installations.

Mk 7 Capability



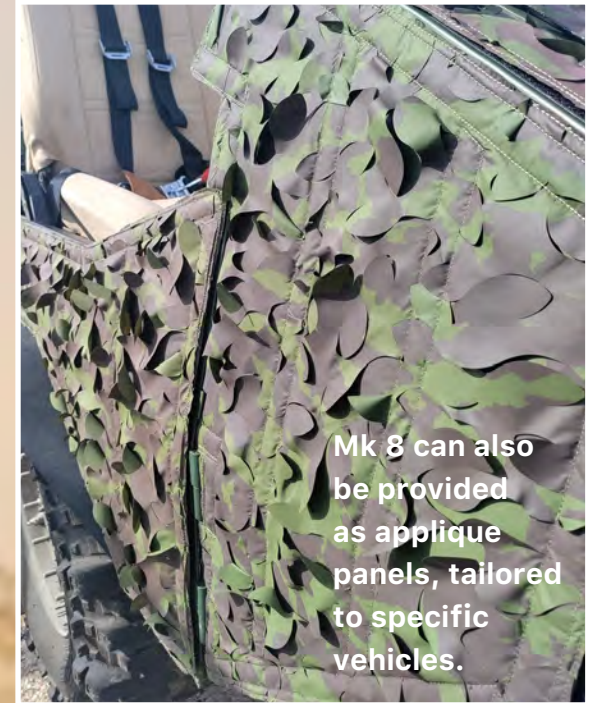
Mk 7 is available in the multiple colour tones including; Woodland, Moorland,, Desert, or Snow.

MK 8 3D ENHANCED SYSTEM

BCB Mk 8 3D Enhanced System takes the proven and popular Mk 7 and improves the thermal properties.

It looks like Mk 7 netting and provides the same utility and textured camouflage 3D finish, but the thermal concealment capability is enhanced significantly.

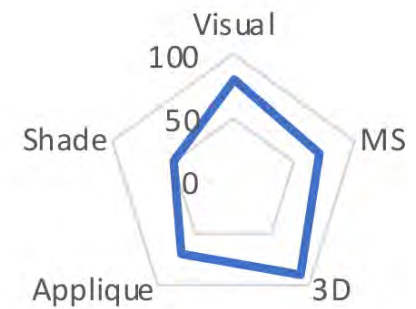
It is available in the same range of environmental palettes; Woodland, Moorland, Desert, or Snow.



Mk 8 can also be provided as applique panels, tailored to specific vehicles.



Mk 8 Capability



MULTI SPECTRAL 2D CAMO SYSTEM

BCB's latest offering is a lightweight 2D Multi Spectral Camo system (MSC)

This novel system provides enhanced MS concealment over our Mk 7, and is a cost-effective, next generation camouflage solution.

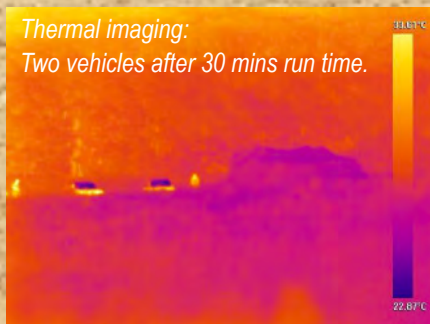
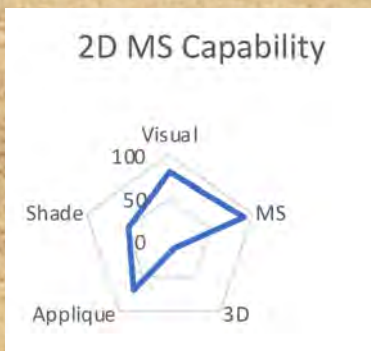
Our reversible MSC has been trialled extensively by British Army units and has been procured for current operations.

It is durable, snag-free and provides excellent levels of concealment and shade cover, whilst remaining resistant to wind movement, environmental degradation and water damage.

“When it's green you can hide. Now with no leaves, it's almost impossible.”

“The enemy have a lot of drones. When you realise that they are looking at you right at that moment, I feel fear. If they see even only two people, they will begin shelling the area.”

Ukrainian Colonel, Operations Office, 2022



MS 2D SYSTEM: EFFICIENT PERFORMANCE

Like all our products; our MSC is modular, allowing panels to be quickly connected or detached for rapid expansion or reduction in coverage. We can supply nets only, for use with existing erection kits; or partial or complete systems, including poles, spreaders, anchors, guys and carry bags.

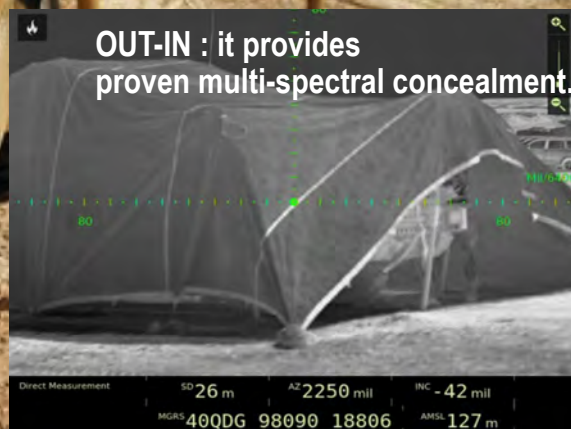
MSC is lightweight, compact, non-absorbant and non-static, making it easy to use. Our MSCS can be reverse-dyed to provide contrasting camouflage patterns on either side to maximise use to suit differing environments. Patterns include: Multi-terrain, Woodland, Snow and Urban, but can be customised.



**MSC
Complete System**

BCB MSCS
has excellent visibility IN/OUT.

**OUT-IN : it provides
proven multi-spectral concealment.**



A SYSTEM, NOT JUST A NET

BCB provide the complete camouflage solution.

Our camo systems come with spreaders, support poles, anchors and bags. They are lightweight, quick to erect and strip down, and are easily transported.

Our in-house design team will work with you to tailor a system to meet your exact requirements.

Our personal camouflage products are compact and include a stuffsack.



PATTERNS FOR ANY OPERATING ENVIRONMENT

FROM DESERT TO SNOW.
FROM URBAN JUNGLE TO PLAINS.
WE WILL ENABLE YOU TO BLEND IN.

MK7/MK8 3D PATTERNS

WOODLAND ARCTIC DESERT MULTI-TERRAIN

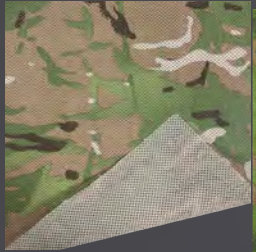


WHATEVER THE TERRAIN

HIDE YOUR ASSETS IN PLAIN SIGHT

MSCS 2-D PATTERNS

**MULTI -
TERRAIN**



**MOORLAND
/ARCTIC (DIGI)**



**WOODLAND/
DESERT**



**ARCTIC/
WOODLAND**



BCB have multiple pattern options to match your operating environment.

Whether you require

A 2D or 3D solution

A tried and tested netting

Or our new Multi Spectral Camo System

We can match a camouflage to your needs.

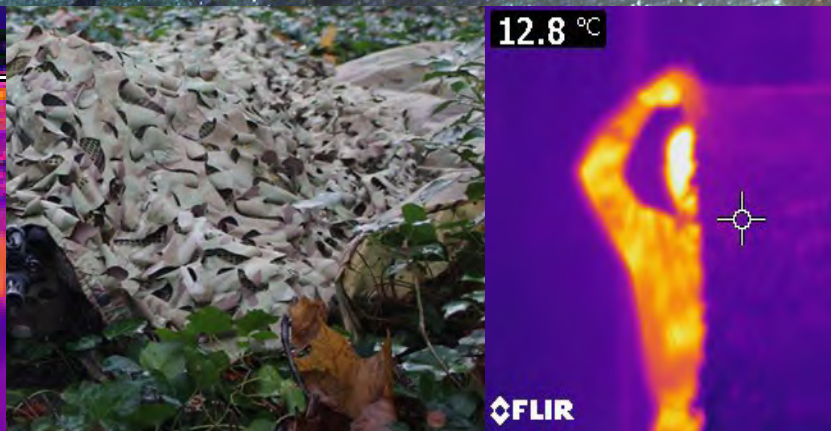
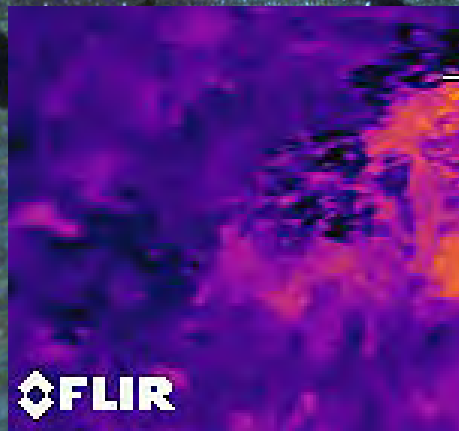
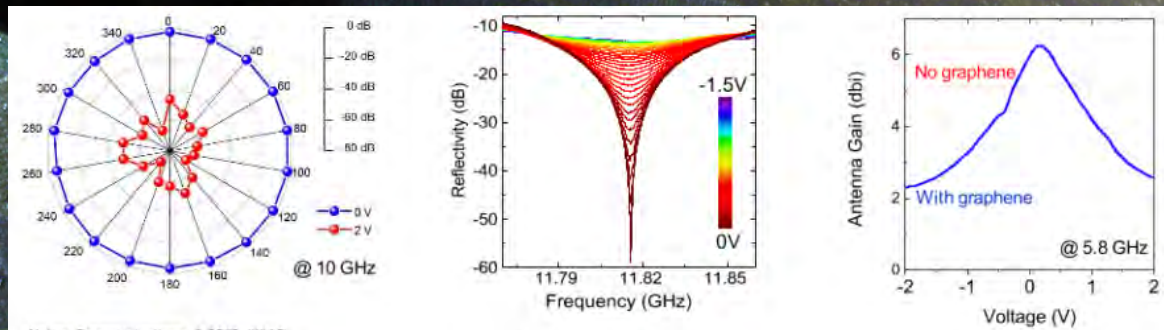
Our systems can be provided in a range of reversible 2-pattern options.

CONTINUOUS ADAPTIVE INNOVATION

At BCB, we work closely with industry partners, universities and research laboratories to refine and develop products that utilise the latest technological developments and materials.

Our in-house military experts, chemists and engineers enable us to provide functional, affordable camouflage and concealment options.

Our design and development team can produce bespoke camouflage solutions to meet your needs and counter emerging threats.



Multispectral adaptive camouflage

	Off	On
Visible		
Infrared		

Multispectral Electro-Optical Surfaces: from Visible to Microwave, arXiv: 2007.08385

THE SCIENCE OF CONCEALMENT INNOVATING TO SURVIVE

At BCB, we understand the pace of technological change. Innovation is in our DNA and we carefully monitor emerging threat technology.

With the rapid advances in remote-piloted air vehicles and sensor technology, and their increasing affordability, our adversaries can see without being seen.

As critical platforms become more sophisticated and potent, the requirement to protect them from an ever more capable and lethal enemy increases.

BCB's camouflage and concealment systems provide a smart, cost-effective solution to protect your most valuable assets.

“ Let your plans be dark and impenetrable as night, and when you move, fall like a thunderbolt.”

”

Sun Tzu, THE ART OF WAR

FIND



FIX



STRIKE



LRD LASE DES



PERSONAL CAMOUFLAGE SYSTEMS

BCB has worked closely with Special Forces, sniper trainers, and heavy weapons teams, to develop bespoke personal and small crew camouflage solutions.

These range from Ghillie suits to camouflaged mortar shelters, all featuring a random pattern to allow the camouflage to blend in with the irregularities of nature.

We can provide off-the-shelf or bespoke, small-order solutions, tailored to your specific needs, in any of our current and novel camouflage systems.

GHILLIE SUITS

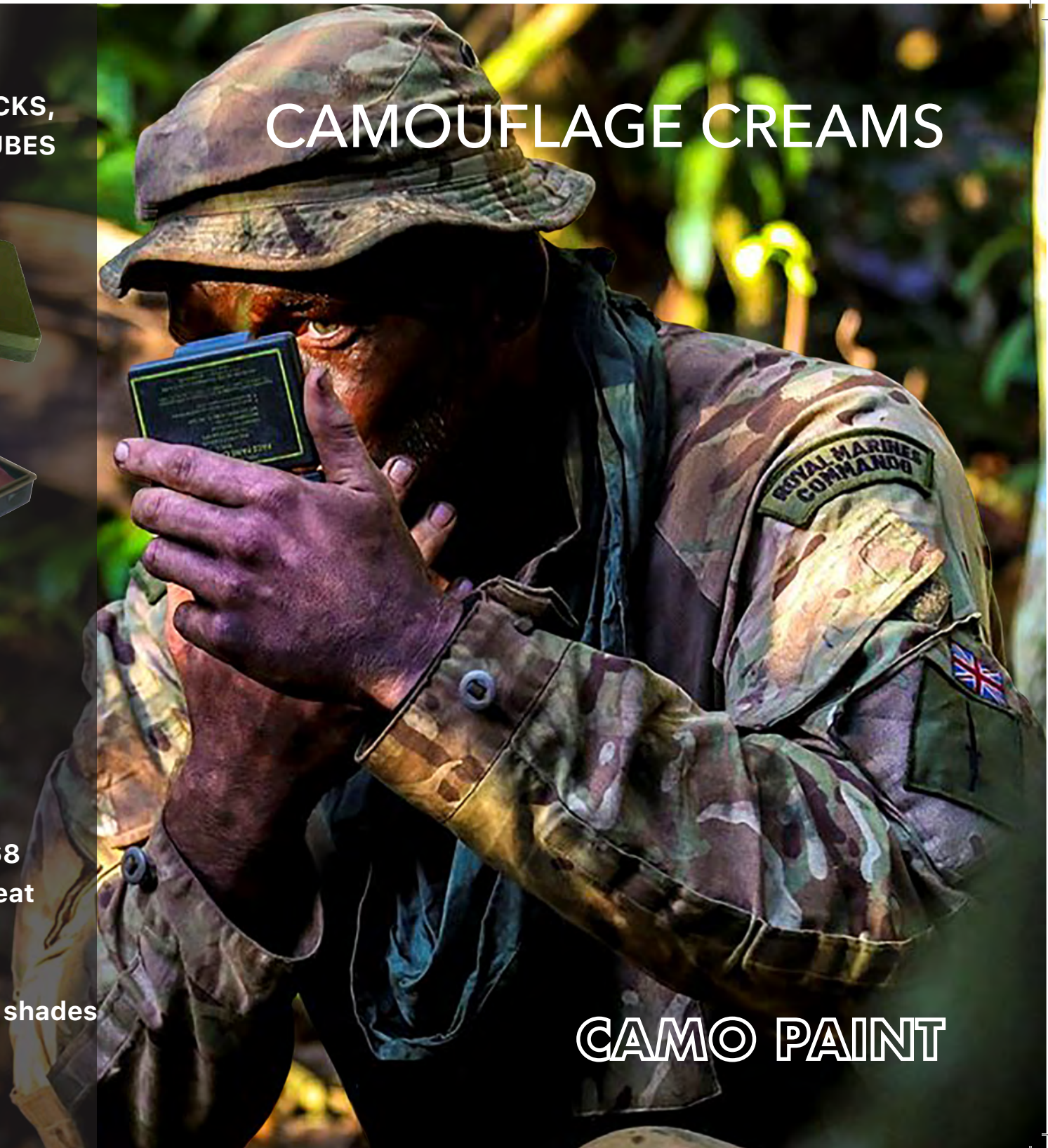




CAMO CREAM STICKS,
PALLETES OR TUBES

- IR reflective formula offers SPF 68
- Colours unaffected by rain or sweat
- Non-toxic
- Easily removed with soap
- Woodland, jungle, desert or arctic shades
- British quality - battle-tested

CAMOUFLAGE CREAMS



CAMO PAINT

BCB provide a complement of high-value asset-concealment and tactical training tools:

DECOYS and TARGETS
SPECIALIST DESIGNS
and **VEHICLE CAMO**

CUSTOMISED CAMO - DECOYS



BCB offer a range of inflatable DECOYS AND DUMMY TARGETS for Training or Tactical Deception.

- Inflatable dummy targets of Military vehicles, command sites or facilities
- Full size replicas with Thermal & Radar signature
- Autonomous mobile decoys
- Remain inflated for 4 days before replenishing
- Lightweight and easily installed



**INFLATABLE
DECOYS**



CUSTOMISED CAMO - TARGETS

**A proven training
and tactical
deception tool**

BCB dummy targets are inflatable
Military replica structures designed and produced
in highly realistic, full-size form.

Ruggedly built
Easy to setup
Quickly inflated

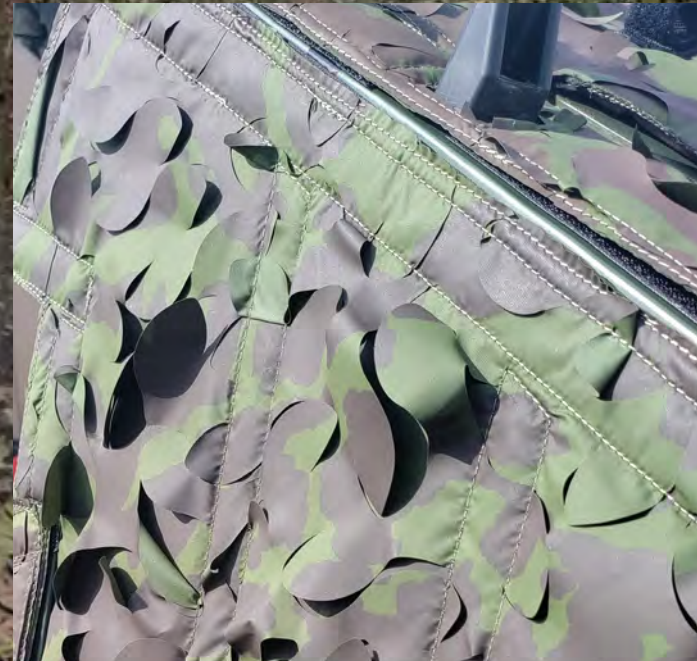
TAILORED TO YOUR NEEDS - JUST ASK



**INFLATABLE
TARGETS**

CUSTOMISED CAMO - VEHICLES

KEEP MOVING - STAY HIDDEN



**VEHICLE
CAMO**

- Attaches to many shapes of vehicle
- Durability to wear or degradation
- Colour fast & Waterproof

WE'VE GOT YOUR BACK

At BCB, we have put the work in to ensure that your security and protection is guaranteed, allowing you to focus on the task in hand.

All our camouflage systems aim to deliver:

- Reduction of visual/thermal/multi-spectral signature
- Suitability to all environments and climates
- Lightweight
- Sun protection
- Excellent IN-OUT visibility
- Durability to wear or degradation
- Colour fastness
- Waterproofing
- Chemical resistance
- Abrasion and snag resistance
- Quietness during movement
- Ease of deployment and stowage

Background images - MoD © Crown copyright 2013

BCB International Ltd.

Tel: +44 (0)29 20 433 700

Email: info@bcbin.com

www.bcbin.com

BCB International Ltd.

Howell House

Lamby Industrial Park

Cardiff

CF3 2EX

UK

**CAMOUFLAGE
COVERED.**

Nets & large-scale systems

Personal Camouflage

Camouflage Creams

Bespoke Decoys & Targets

