

# MK8 SIGNATURE MANAGEMENT SUIT

Provides: VIS NIR TIR Protection

## GHILLIE CAMOUFLAGE SUIT For Sniper Reconnaissance

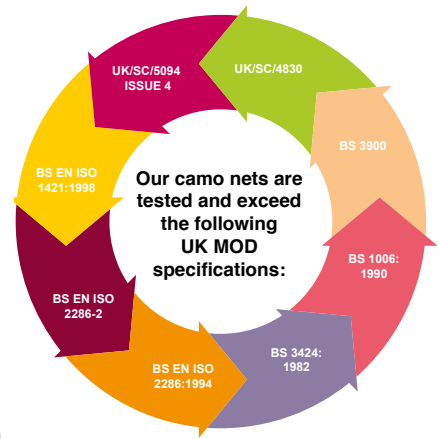
Designed to defeat Night/Thermal Image Intensifier and Thermal optics.

<b>Tested to, or</b>	UK/SC/5094 Issue 14
<b>Exceeds these</b>	UK/SC/4830
<b>UK MoD specs:</b>	BS 3900
	BS 1006: 1990
	BS 3424: 1982
	BS EN ISO 2286: 1994
	BS EN ISO 2286-2
	BS EN ISO 1421: 1998



Available in different colour tones. Patterns, colours and sizes can be customised to your requirement.

WOODLAND MOUNTAIN DESERT URBAN SNOW



NET052 (2m x 2m)  
NET054 (2.2 x 2.2m)  
NET053 (3 x 3m)

- 2-piece suit protects the wearer in the Visual,(VIS) Infrared(NIR) and Thermal(TIR) spectra
- 3-D pattern blends with the irregularities of nature.
- Tested by Royal Marines : classed as 'Fit for Purpose'
- Fire resistant materials
- Wired hood closure
- Quiet, comfortable and non-shiny
- Breathable
- Weight 1.6kg

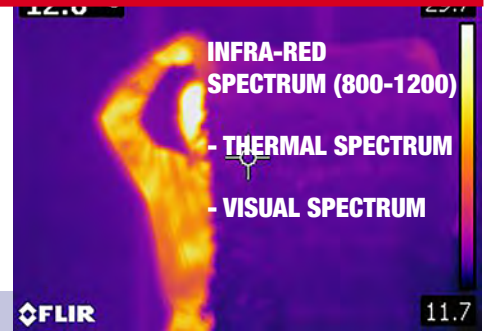


# MS CRINKLE CAMO FABRIC

A newly developed camouflage fabric designed to better blend with the natural environment in a light, comfortable and durable material that can be worn against the skin for long periods.

## PROPERTIES:

- Operational temperature range : 45°C à +70°C. (EN 60068-2-2 / EN 60068-2-1)
- Fire resistance (ISO 6941)
- Resistance to Petroleum Oil: No deformation
- Washing Fastness: ≤ 4/5 ISO 105 C01
- Water Fastness: ≤ 4/5 ISO 105 E01
- Rubbing Fastness (dry) : ≤ 3 ISO 105-X 12
- Tear Resistance:  
Warp: 24 N Weft: 23 N (DIN EN ISO 13937-2)
- Breaking Resistance:  
Warp: ≥ 288 N Weft: ≥ 282 N (DIN EN ISO 13934-1)
- Air Permeability: 2398,5 mm/s (EN ISO 9237)



PACKED: Vacuum sealed  
in light resistant and  
waterproof plastic pouch

## REFLECTANCE Spectrophotometer 800-1200 nm

- Light Green: %13- %16
- Dark Green: %11 -%14
- Brown: %8- %11
- Black: %5- %8

*The properties of CRINKLE CAMO fabric mean it is perfect for sniper suits or personal camouflage cover in natural environments.*

**In the form of Camo screens, Crinkle Camo can protect smaller vehicles and weapons systems, as well as personnel, from detection by military reconnaissance.**

- The rapid deployment multispectral camo screen is made from a lightweight single piece of rectangular shaped fabric with a camouflage pattern on both sides
- Dimensions/Weight: 3.50 x 3.50m / 185 g/m2
- The Crinkled (3D) finish blends in with the irregularities of nature.
- Multispectral: Protects in the visual, infrared and thermal spectrums.
- The screen is equipped with an integrated strong bungee type attachment system in its top section which enables the screen to be attached at both ends and suspended in front of or over the asset.
- Operational Length limit of attachment system : 4,5 m
- Camouflage pattern: Customisable
- Deployment time: 40 seconds (maximum)



BEFORE (above) and AFTER  
(below) screen deployment  
(Thermal imagery)

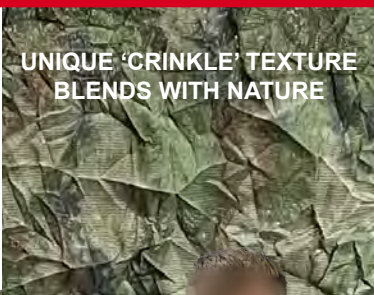






## 3D CRINKLE SNIPER SET SYSTEM (SSS)

This concealment ensemble is made from specialised lightweight material that helps the wearer blend into any environment while at the same time protecting them in the **RADAR, INFRARED and THERMAL** spectrums.



UNIQUE 'CRINKLE' TEXTURE  
BLENDS WITH NATURE



PONCHO

SNOOD

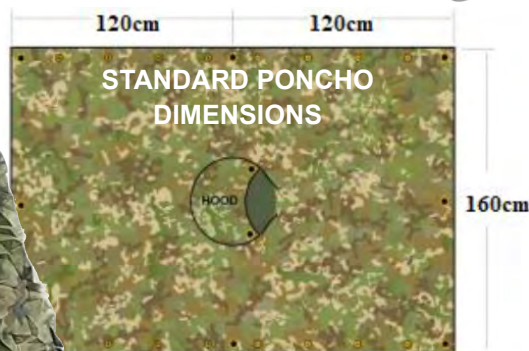
### FABRIC FEATURES:

- Random 3D 'Crinkle' pattern blends in with nature.
- Non-snag & breathable.
- Quiet and Lightweight.
- Fire Retardant.
- Quick drying.
- OT range:  $-45^{\circ}\text{C}$  to  $+70^{\circ}\text{C}$ .
- **WEIGHT: 2.07kg**

*Patterns, colours and sizes can be customised to suit.*



COMBAT SHIRT & TROUSERS



STANDARD PONCHO  
DIMENSIONS

### System comprises:

- 1 x poncho (CL702)
- 1 x snood (CL704)
- 1 x combat shirt (CL703)
- 1 x combat trousers (CL705)
- 1 x stuff sack (CL706)



STUFF SACK

### PONCHO SHOWN IN-SITU







## ONE MAN TENT

### **BCB one man observation shelter comes with Thermal /IRR Camouflage net**



- Easily erected set up time less than 10 minutes
- You can have both items separate tent only or combined
- Zips back and front to enable javelin to be fired
- Erected Size 1.5 m x 1.5 mtrs
- Weight tent 1.3 Kg
- Weight net 3 Kg
- Combines weight (tent, net, poles and pegs) 4.5 Kg

Tent only size 75 x 20x20

Net only size 75cmx20x20





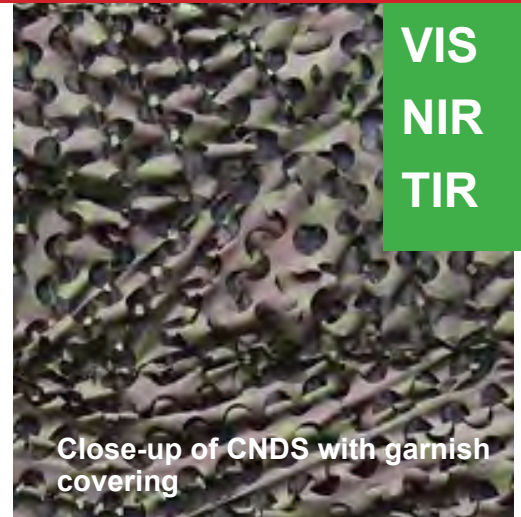


## Combat Net Defence System (CNDS)

**Ballistic protective camouflage cover against drone or loitering munitions; Direct & Indirect.**

**Made from special Dyneema twisted UHMPE yarn.**

**A lightweight practical solution for maximum protection.**



**VIS  
NIR  
TIR**

Close-up of CNDS with garnish covering



Close-up of the Aramid material with high tensile netting



- **Lightweight**
- **Easy + quick to deploy**
- **50% volume reduction compared to regular PE**
- **Almost 70% weight reduction compared to PE**
- **Visual (VIS), Thermal (TIR), and Infrared (NIR)**
- **High strength to weight ratio**
- **Twisted and Double knotted to prevent slippage**
- **3D visual camouflage**
- **Coating for long life**
- **High strength Dyneema**

Code: NET050

The net is specially constructed from high tenacity aramid material to deflect or capture loitering munitions, Drones or air-dropped ordnance.

**Includes a thermal 3D camouflage covering for visual (VIS), Near Infrared (NIR) and Thermal (TIR) concealment.**

Can be manufactured to any configuration required, for example, fitting over a trench, a specific platform or vehicle.

Can also be joined together to make larger nets.



Fast flying Drone snags in netting



## DEFENCE TEST summary by former serving officer:

*"The attack profile was good - exactly the style we are using for the drones*

*I think this actually may stop Lancet loitering munitions.*

*This system will saves lives and prolong equipment survivability, because, firstly it's giving cover to the guys on the ground and secondly, the CNDS is deflecting the blast especially for shape charge munitions*

*Countering the threat before it gets close"*

**This protect and deflect system can be used over trenches, or put over a frame to form a hide for personnel, or a garage for armoured vehicles.**



## Aerial Thermal view of 2 x CNDS

Level Shelter (left)  
Lean-to Shelter (Right)

Man hidden under shelter (circled)



**Both shelter and Lean-to passed field tests for trapping Drones and small munitions**

Man revealed exiting shelter on left.

DYNEEMA SIZE REF	Approx DIAMETER mm	RUNNAGE (Metres/Kg)	Breaking strength (kgf) kilos force	KNOT breaking strength (kgf) kilos force
6	1.0	2640	79	80



**Easily and rapidly deployed thermal camouflage cover. With the addition of a skirt of extra material, it conceals the user from above, and 360° at ground level.**

Conceals an individual on the move

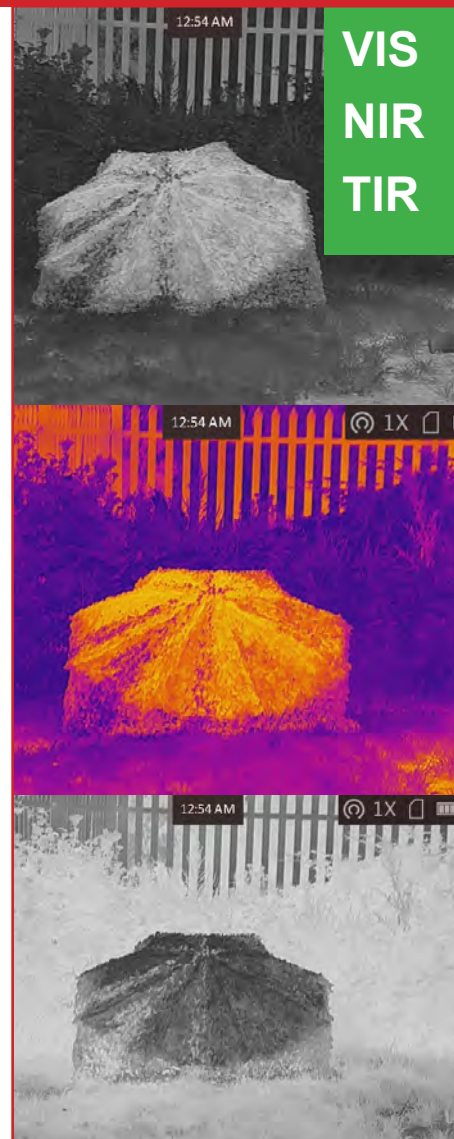
Can be staked down as a sniper hide

Can conceal vehicle turrets.

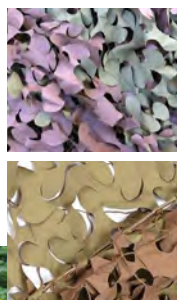
Made from Mk8 3D material, it protects in the Visual(VIS), Infrared (NIR) and Thermal (TIR) spectrums.

- **Lightweight**
- **Easy + deploys in seconds**
- **Visual, Thermal and Infrared camouflage**
- **Versatile: can be staked down**
- **Available in: Woodland, MTP or Sand/Desert**

*Cambrella shown in Leaning position*



**THERMAL IMAGES OF CAMBRELLA CONCEALING A SOLDIER**



**Cambrella closed**



code: NET051

**Diameter : 1.8 metre (open)**  
**Height: 1.08 metre**  
**Weight: 2.19 Kilos**



# GRASSHOPPER MSC SYSTEM

**Provides: VIS NIR TIR Protection**

**Stay undetected, stay protected.**  
Tactical technology for your field operations.

Engineered for stealth and concealment, this innovative double-layer shelter ensures optimal operational security by minimizing heat signatures and infrared visibility.

## MS BI-SHELTER - MK8 2-D MS

Experience unparalleled tactical advantage with our state-of-the-art, BI-LAYER SHELTER featuring advanced thermal and IR reflective materials.

## DETACHABLE CLOAK - NATURAL 3-D CRINKLE

The cutting-edge DETACHABLE THERMAL AND IR CLOAK is designed for military applications.

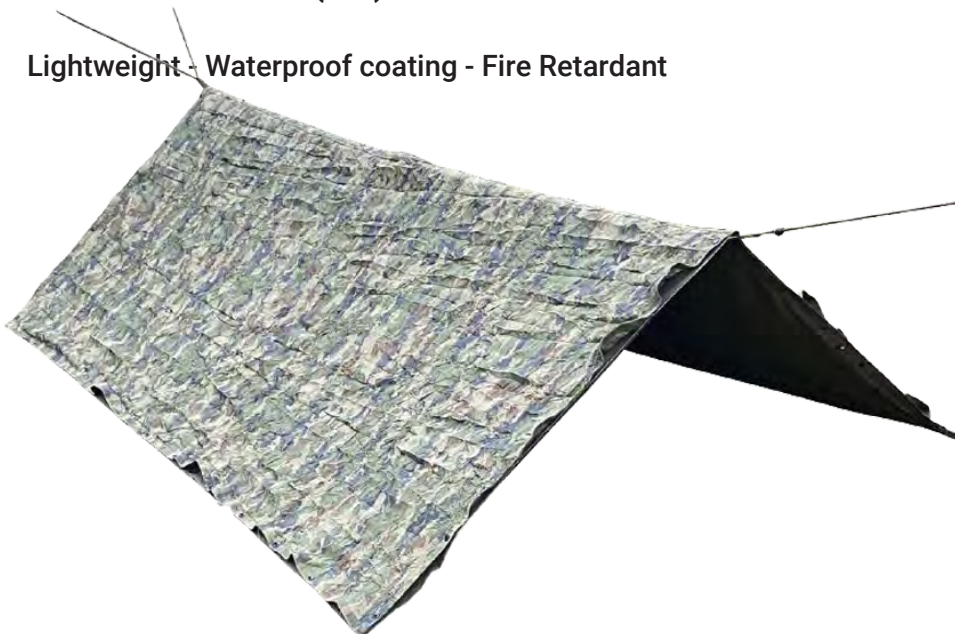
Stay invisible to heat sensors and infrared detection. Enhance your tactical edge with this versatile and essential tool for modern warfare.

**Visual Camouflage: 380NM-750NM**

**Near Infra Red Protection: 760-NM-1200NM**

**Thermal Protection (TIR)**

**Lightweight - Waterproof coating - Fire Retardant**



## SPECIFICATIONS:

Size: 250cm x 220cm  
Weight: 2.8 Kg  
Material: 190T Polyester with PU 3000mm  
NSN 8415-99-754-7417

Available in  
Multi terrain, Arctic, Desert and Woodland



# MSC LARVA CLOAK

**Provides: VIS NIR TIR Protection**

**Stay undetected, stay protected.**  
– choose the forefront of tactical technology.

## Introducing the Larva Cloak:

Revolutionising ground troop operations by significantly reducing thermal signatures.

Improve stealth and survivability with our cutting-edge technology, ensuring troops remain undetected in critical situations.

The cutting-edge Thermal and IR Cloak is designed for military applications.

Equip yourself with the ultimate advantage – a cloak that seamlessly integrates thermal and IR reflective technology.

Stay invisible to heat sensors and infrared detection.

Enhance your tactical edge with this versatile and essential tool for modern warfare.

**Visual Camouflage: 380NM-750NM**  
**Near Infra Red Protection: 760-NM-1200NM**  
**Thermal Protection (TIR)**

Lightweight - Waterproof coating - Fire Retardant



### SPECIFICATIONS:

Size:	250cm x 220cm
Weight:	?? Kg
Material:	190T Polyester treated for MS properties
NSN	8405-99-665-1364

Available in  
Multi terrain, Arctic, Desert and Woodland





## MS 'ROCKY' CAMO THERMAL COVER

DOUBLE-SIDED FOR 2  
DIFFERENT TERRAINS

- VISUAL Camouflage (VIS): 380nm-760nm
- NEAR INFRA RED (NIR): 760nm - 1200nm
- THERMAL Protection (TIR): 3-5 $\mu$ m and 8-12 $\mu$ m
- RADAR Protection: 2-100 GHz

The **MALLEABLE STRUCTURE** allows the user to mould it to rock-like shapes

ROCKY COVER SHOWN  
IN THE FIELD



### Physical Characteristics:

- Size 2m x 3m
- Double sided: 2 terrains
- Options of different colours and patterns
- Lightweight, 400g/m<sup>2</sup>
- Low water absorption capacity
- Antibacterial
- Pack size: 30 x 50 cm

CODE NET 037

ROCKY SHOWN  
IN DESERT  
TERRAIN







## MS 'ROCKY' CAMO THERMAL COVER

### THE ROCKY

**perfectly camouflages the human form**  
and can conceal stored assets or supplies



**ONLY the Sniper's boots**  
**shown OUTSIDE Rocky, are visible**







# MULTI-SPECTRAL (MSC) 2-D SYSTEM

**Provides: VIS-SWIR-MWIR-LWIR Protection**

**Our NATO Issue, Infrared-reflective camouflage system remains pliable, even in extreme temperature ranges. MSC 2-D is lightweight, non snag and quiet.**

Available in a range of sizes, these systems are proven in the Field and are highly efficient in keeping valuable assets concealed.

Once erected, the meshed design of the net allows the crew to see through the net and thus retain situational awareness.

Furthermore the crew are able to operate the vehicle weapon system freely.

The BCB MSC system can be ordered in the sizes and colours to suit your specific needs.



**SPECTRUM  
TESTED**

**VISUAL Camouflage (VIS)** : 380nm-760nm  
**NEAR INFRA RED (NIR)** : 760nm - 1200nm  
**THERMAL Protection (TIR)** : 3-5 $\mu$ m & 8-12 $\mu$ m  
**RADAR Protection** : 2-100 GHz

Thermal image captured from a MOSQUITO thermal optic, showing excellent TIR properties concealing vehicle.



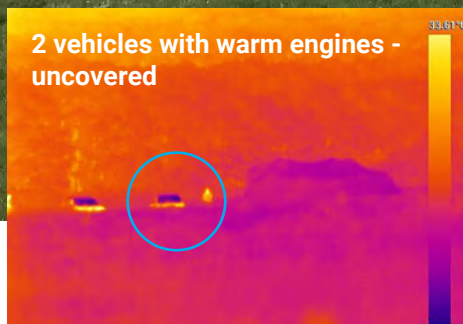
- Operational temperature range:-45°C to +70°C.  
(EN 60068-2-2 / EN 60068-2-1)
- Tear Resistance:  
Warp: 24 N Weft: 23 N (DIN EN ISO 13937-2)
- Breaking Resistance:  
Warp:  $\geq 288$  N Weft:  $\geq 282$  N  
(DIN EN ISO 13934-1)
- Rubbing Fastness (dry) :  $\leq 3$  ISO 105-X 12
- Resistance to Petroleum Oil: No deformation
- Air Permeability: 2398,5 mm/s (EN ISO 9237)
- Fire resistance (ISO 6941)
- Washing Fastness:  $\leq 4/5$  ISO 105 C01
- Water Fastness:  $\leq 4/5$  ISO 105 E01



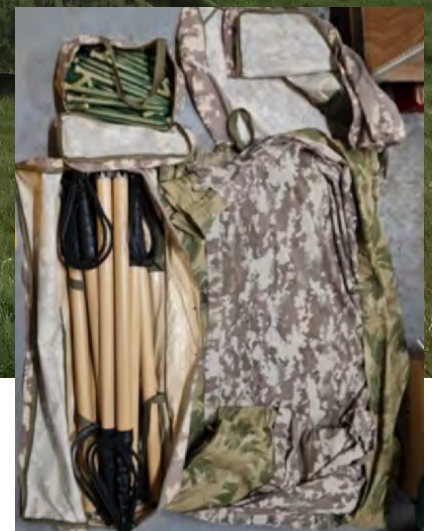
## MSC 2D

**MSC will conceal from detection and surveillance sensors a range of assets:  
Tanks, Armoured vehicles, Weapon systems,  
Mobile command centers...**

- Disruptive/digital pattern blends with natural background
- Excellent visibility from inside-to-out, look-out panels possible
- Improved crew-shading
- Reduced snagging
- Low storage and easy deployment
- Edges finished in 'Dutch lacing' allowing easy panel connection/deconnection
- Double-sided, reversible camouflage pattern to suit two differing environments
- Trialled extensively by British Army units and procured for recent operations



**STANDARD  
PATTERN  
OPTIONS:**



### Typical System contents:

4 x	Poles (1.22 metres)
4 x	Poles (2.43 metres)
8 x	Adaptor sleeves
6 x	Spreaders
24 x	Ground Pegs



# MK8 3D MOBILE VEHICLE CAMOUFLAGE

Provides: VIS NIR SWIR MWIR LWIR RAD Protection

MS Mobile Camo is tailored to specific vehicles as applique panels which attach via instant hook and loop fixings to each part of the vehicle, over engines and around exhausts, aerials, etc.

The system prevents the detection of moving assets such as armoured vehicles, tanks and weapons systems by all reconnaissance and surveillance sensors, currently known.

*Mk 8 Camo  
Panels are  
made to fit  
contours of  
vehicle*



*Can be combined with the Mk 7 3-D nets over the Mk 8 panels system.*

- Provides highly enhanced protection in the VIS, TIR, NIR & Radar spectrums
- Fire resistant
- Modular structure
- Solar load reduction
- Easy installation and collection
- Customised to each vehicle
- Different textured finishes possible
- Available in patterns to suit different environments



Provides: VIS SWIR MWIR LWIR UV Protection

**SPECTRUM  
TESTED**

VISUAL Camouflage (VIS) : 380nm-760nm

NEAR INFRA RED (NIR) : 760nm - 1200nm

THERMAL Protection (TIR) : 3-5µm and 8-12µm

RADAR Protection : 2-100 GHz

## CAMO PANELS CUSTOMISED TO FIT ANY VEHICLE

**Protect  
valuable  
assets  
from detection or attack**

The panels are available in bespoke sizes as a rapid and easily-attached system that protects vehicles during transport and whilst waiting for deployment.



*Cars, armoured vehicles, lorries, tanks...*





# JACKAL MULTISPECTRAL CAMOUFLAGE (MSC) CUSTOM PANELING SYSTEM



- Unique 4 layering blended system
- Highly effective, and variable
- Durable outer layers available in a wide range of colours and camo patterns
- The 3D garnish allows for the breaking up of the vehicles outline.
- Different panels can be produced in different colours to help break-up the vehicles profile.
- The panels can be completely customised, including shape profile and colour.
- The panelling system can be paired with 3D crinkle or 2D cam net.



## BCB's MSC System

**SPECTRUM  
TESTED**

VISUAL Camouflage (VIS) : 380nm-760nm  
NEAR INFRA RED (NIR) : 760nm - 1200nm  
THERMAL Protection (TIR) : 3-5µm and 8-12µm  
RADAR Protection : 2-100 GHz





- Easy attachment and removal, allows for different environments and rapid in the field maintenance when driving through dense woodlands
- 3D Drapping allows for “Shape-Shifting”





# ULCAT: ULTRA LIGHTWEIGHT CAMO TUNNEL

**Provides: VIS-SWIR-MWIR-LWIR Protection**

## For rapid vehicle concealment and deployment

The vehicle tunnel is made from specialised 3D material which is lightweight and snag free. It conceals in the Visual, Infrared and Thermal spectrums.

The standard tunnel length, when closed is 13.5 metres. Allows rapid vehicle concealment and exit, with great visibility from inside-to-out.

Fitted with opening ends which tie back for easy entry and exit.

The ULCAT can easily accommodate an armoured vehicle with space for a field office/command centre.



- Natural 3D pattern blends with nature
- Protects in the visual, thermal and infrared spectra
- Non-snag and breathable material
- Quiet, Lightweight and Fire Resistant
- Non-absorbent
- Excellent visibility from inside-to-out
- Material Operational Temperature range -45°C to +70°C
- Fast-opening front/back doors for rapid vehicle insertion/evacuation
- Two quick opening lateral doors for personnel entry.
- UK MoD issue fibreglass tent poles & ground spikes
- Can also be used as a camouflage screen without poles, spreaders etc.





**ULCAT - AMPLE SPACE  
FOR VEHICLE, SUPPLIES &  
COMMAND CENTRE**

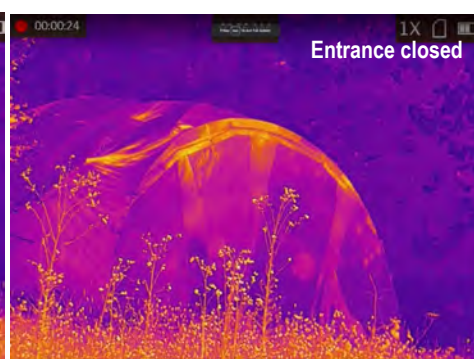
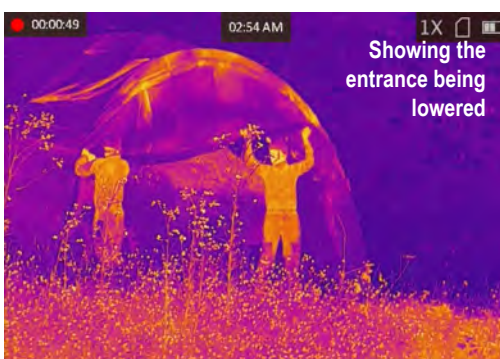
## THERMAL TESTING RESULTS

- with vehicle and personnel inside



Reflectance  
Spectrophotometer  
800-1200nm

- Light Green: 13%- 16%
- Dark Green: 11% -14%
- Brown: 8%- 11%
- Black: 5%- 8%



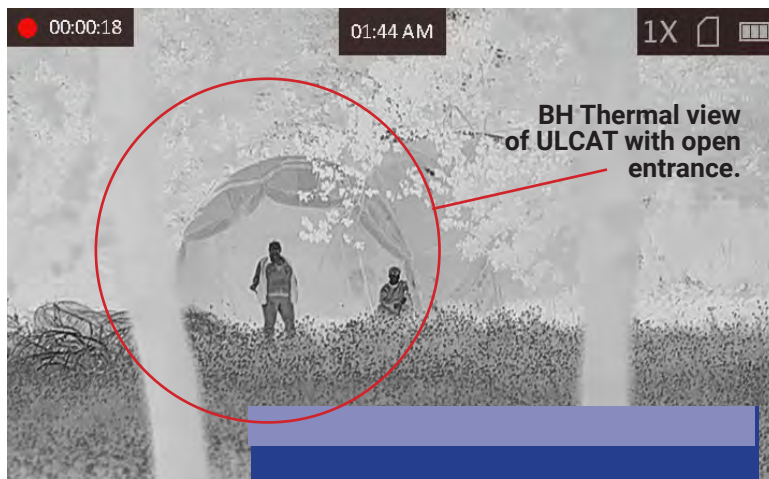
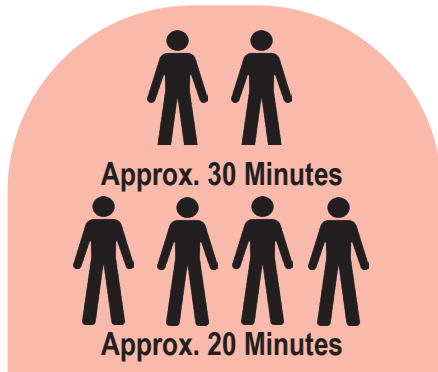
FUSION IR

**ULCAT concealing  
Vehicle and personnel  
when viewed through  
Fusion IR scope.**



## ULCAT

TIME / PERSONNEL TO ERECT TUNNEL?



ULCAT System pack contents:

	1 x	Crinkle netting
	46 x	1.2m Poles
	12 x	Ground Stakes
	8 x	4.5m Telescopic Spreaders
	25 x	Ground Spikes
	1 x	Repair Kit

Specifications:	
Set up time :	Approx 20-30 minutes (crew of 2-4 people)
Dimensions of ULCAT (deployed)	13.4metres (Length) inc. door canopies x 4metres (Width) x 3.5metres (Height)
Weight of camouflage Net:	Approx. 32 kilos
Complete system weight (inc. spreader poles, pegs, stakes etc):	Approx. 140kg

- Operational temperature: Range - 45°C to +70°C.
- (EN 60068-2-2 / EN 60068-2-1)
- Fire resistance (ISO 6941)
- Wash Fastness: ≤ 4/5 ISO 105 C01
- Water Fastness: ≤ 4/5 ISO 105 E01
- Rubbing Fastness: ≤ 3 ISO 105-X 12
- Air Permeability (EN ISO 9237)

Resistance to:

- Oil
- Tearing (DIN EN ISO 13937-2)
- Breaking (DIN EN ISO 13934-1)

### Erecting the ULCAT- basic stages



The BCB ULCAT System can be ordered in S/M/L to suit your vehicle.  
CODE NET047