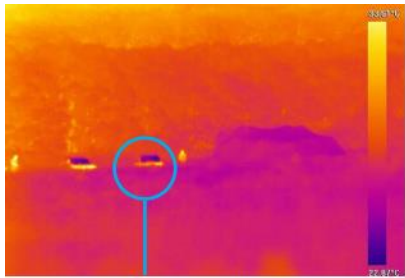
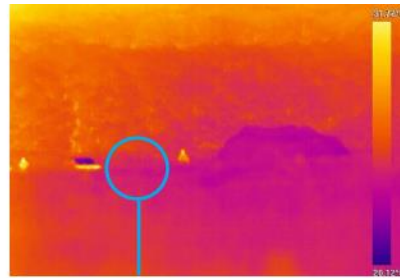


Mobile Multispectral Camouflage for Vehicles (MMS)

Technology Photos



Before Camouflage net



After Camouflage net applied



System Details

Uses the MK8 Phantom multispectral camouflage material for vehicles.

Infra-red and thermal reflective properties. Offers full concealment of vehicles especially from drones and other advanced optics. Currently undergoing trialling for fire resistant capabilities that do not impact the IR and thermal reflective properties.

This material can also be further enhanced with an additional semi-rigid lightweight material, which provides extra thermal protection. This allows the MCS to be velcroed easily and quickly to the flat panels of a vehicle so the vehicle is camouflaged and mobile. And especially to cover vehicle hot spots like engine covers and tracks.

Weight: 150gm/m² tested to BS EN 12127 without the additional 'hot spot' layer.

The material will be used in the field by field operatives.

The material requires no training to erect and is easy to put up and down.



Patterns, colours and sizes can be customized according to customer requirements

How it would be used?

MK8 Phantom multi-spectral - Protects the vehicle in the visual, infrared (NIR & SWIR) and thermal spectrum's (MWIR & LWIR)

- Designed to defeat image intensifier and thermal optics
- Camouflage MK8 blocks thermal energy transmitted by the vehicles.
- Random 3D pattern blends in with the irregularities of nature.
- Quick and easy to change for different colours or terrains
- Anti Radar, water repellent finish. Double sided print (note only one side is 3D)



www.bcb.in.com

02920 433700

Howell House, Lamby Industrial Estate,
Wentloog Avenue, Cardiff, CF3 2EX



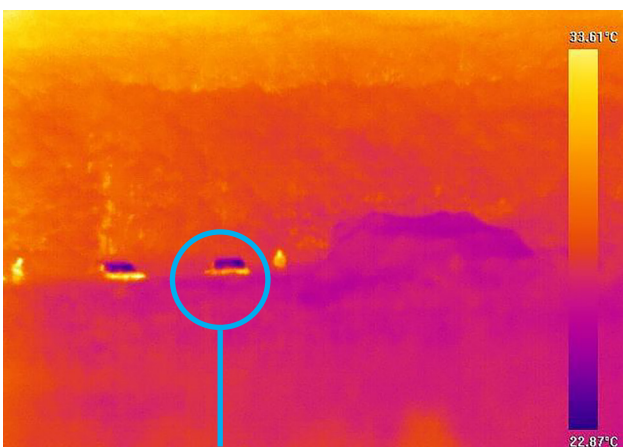
Multispectral Field Camouflage (MFC)

Mk8 Multi-Spectral Material

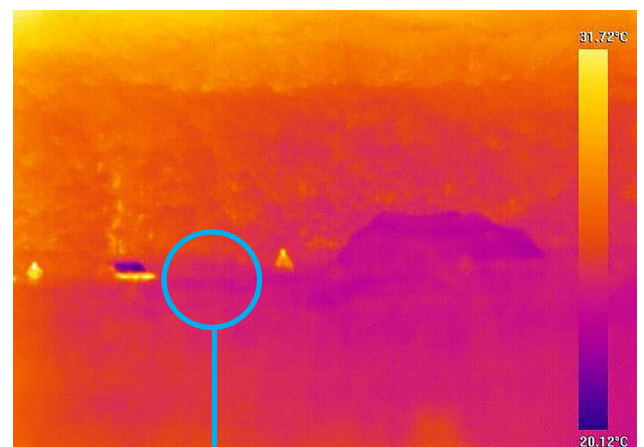


Multi-spectral - Protects the vehicle in the visual, infrared (NIR & SWIR) and thermal spectrum's (MWIR & LWIR)

- Designed to Intensifier and Thermal optics
- Camouflage net blocks thermal energy transmitted by the soldiers / vehicles.
- Random 3D pattern blends in with the irregularities of nature.
- Easy to set up and put down
- Quick and easy to change for different colours or terrains



Before Camouflage net








After Camouflage net applied



Multispectral Field Camouflage (MFC)

Mk8 Multi-Spectral Material



Woodland	Moorland / Mountain	Desert	Urban	Snow
				
Patterns, colours and sizes can be customized according to customer requirements				

Standard sizes

Size Metres	2.4 x 2.1	4.5 x 4.5	7.5 x 7.5	9 x 9	11 x 11	11.5 x 5.5	11.5 x 11.5	12 x 6	12 x 12
Size Feet	8 x 7	15 x 15	25 x 25	30 x 30	36 x 36	38 x 18	38 x 38	40 x 20	40 x 40

Also available for sniper suits and other specialist uses.

WWW.BCBIN.COM

Email: info@bcbin.com

Tel: +44 (0) 29 2043 3700