

BOAT STOPPING SYSTEMS overview



BCB BOAT STOPPING SYSTEMS at a glance



FEATURE	BARRACUDA (HAND-HELD)	BUCCANEER (SHIP BOURNE)	SEA STINGER (PORT / VESSEL)
Barrel Diameter	5" (125mm)	5" (125mm)	7" (175mm)
Max Range (approx)	40yds (36m)	200yds (200m)	437yds, 400m (line) 328yds, 300m (net)
Typical line length	40yds (36m)	100yds (100m)	218yds, 200m (line) 109yds, 100m (net)
Typical barrel length	24" (0.5m)	48" (1.2m)	48" (1.2m)
Max operating charge	11bar (160psi)	40bar (600psi)	40bar (600psi)
Total weight	28.6lbs (13kg)	72lbs (33kg)	430lbs (195kg)
Dimensions	6" x 52" (15cm x 130cm)	47" x 11" (117cm x 27cm)	59" x 23" (147cm x 57cm)



Launch



Line Out



2nd Anchor



1st Anchor Landed



Caught



Stopped



*For further
information
and to see
video demos of
all three BCB
Boat Stopping
Systems, just
scan the QR code
with your device.*

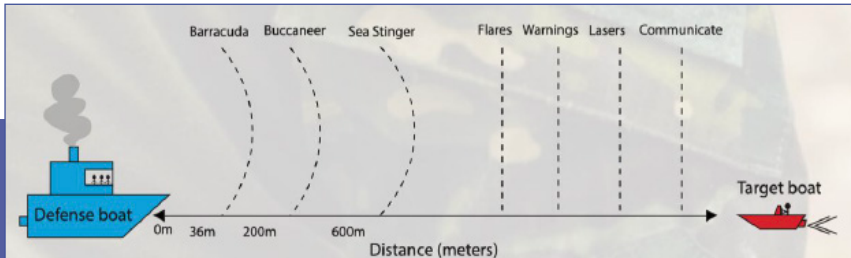
BOAT STOPPING SYSTEMS overview



Innovation. Expertise. Experience.
Providing life-saving equipment
for frontline services since 1854.



3 non-lethal, quick, easy and reliable means of stopping vessels on water.



COMPARISON OF THE STOPPING DISTANCE OF THE 3 MODELS

- ✓ **PATENTED MARITIME DEFENCE SYSTEM.**
- ✓ **EXTENSIVELY TESTED.**
- ✓ **100% EFFECTIVE.**



Barracuda

The **BARRACUDA** is ideal for close interception and can be adapted for launching other items in the military and maritime field.

- Launched as a hand-held device
- Can launch a 36m (40yd) arrestor line and two 3ft (1m) sea anchors.
- Operates at a low pressure of 150 pounds per square inch
- Works in a variety of sea states
- Ideal for close interception
- Comes in carrying case with two munitions

The **BUCCANEER** delivers projectiles designed to deter and disable small, fast sea craft at range. It is very versatile offering a range of projectile options.

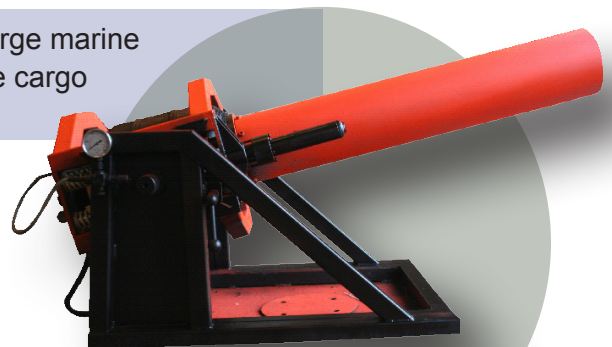


Buccaneer

- Ship borne with up to a 200m (Max) range
- Typical line length: 100m
- Can be fitted with single or twin V-shaped barrel, 360° rotation and 45° angle adjustment
- Versatile - can be used on all sizes of vessel from RIBS to Ships.
- Can launch ship-to-ship, or ship-to-shore
- Weight: 33Kg

The **SEA STINGER** is used as an 'Area Denial System' for large marine key point installation, such as oil rigs, ports, estuary's or large cargo vessels that are vulnerable to acts of terrorism.

- Launched as a land or vessel-mounted device
- Works in a variety of sea states
- Can launch line or netting
- Reloads quickly and easily
- Capable of deploying entangling netting out to a range of: Typical 400m/Max 600 meters.
- Ideal for quickly closing a port, harbour, estuary to protecting assets.
- Weight: 195Kg and stainless steel throughout



Sea Stinger

Buccaneer KIS

With a range of up to 200 meters the Buccaneer KIS uses specialised payloads to lay buoyant netting / line for interdiction operations.

Extremely flexible, it operates with a 360° rotation and depression or elevation of 45° degrees from horizontal.

It can be mounted on many sizes of vessels and fires a variety of projectiles, depending on need.

Operated remotely from the bridge or control room safely and uses no explosive or pyrotechnics parts.



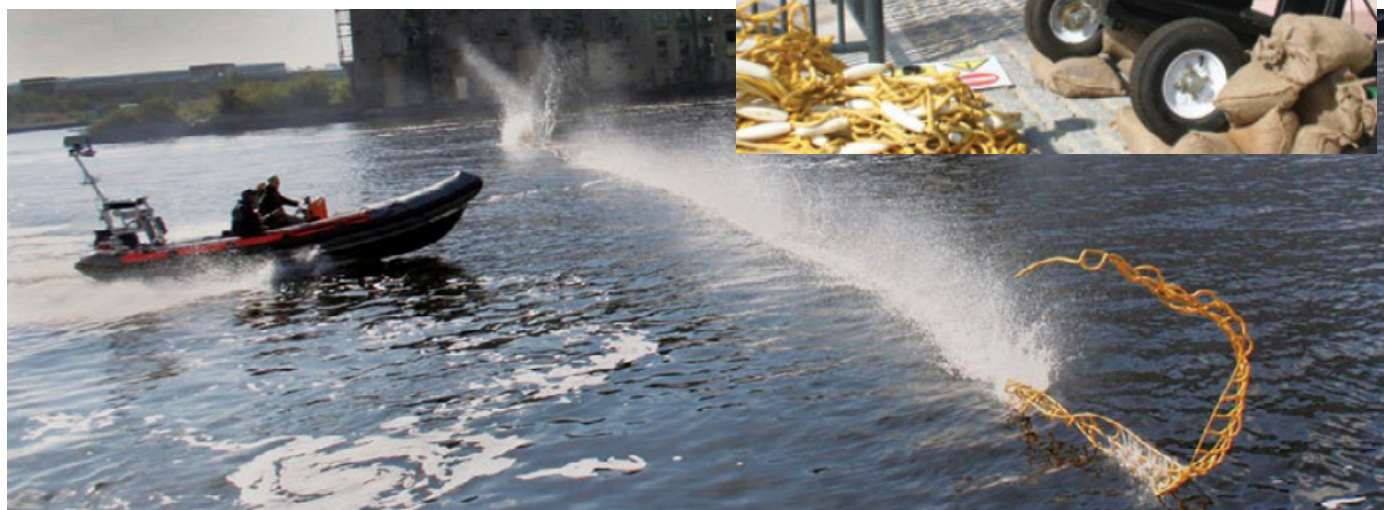
Can be fixed to vessel or free-standing on land or smaller craft.



Sea Stinger

The Sea Stinger provides a non lethal deterrence and defence against incursions into vulnerable water ways and areas of sea.

Reloading is quick and easy, taking only two minutes. Recover the line or net and re-use it again and again. Dockside mounted or on board a ship, it is simple to use and maintain.



BOAT STOPPING SYSTEMS overview

UNIVERSAL MOUNTED



ALL SYSTEMS FEATURE:

- All air powered, non explosive launchers – fill quickly from any cylinder
- Variable pressure so range can vary
- Reload quickly
- Non lethal alternative option
- Low cost to use as the munitions are reusable (if undamaged)
- A new “escalation of force” option
- Minimum maintenance
- Salt Water corrosion resistant

Barracuda

The arrestor line system is simple and effective.

1. Each fires a floating Dynema or Spectra line with a sea anchor at both ends.
2. The line and sea anchors are launched in a streamlined container (the munition).
3. On landing, two sea anchors deploy.
4. The floating line entangles the stern gear on the target vessel motors.
5. The sea anchors inflate, creating a drag which slows the target to a virtual stop in seconds.
6. Undamaged line can be retrieved and re-used.

