



HUMANITARIAN  
AID EQUIPMENT

# TO SAVE AND PROTECT LIVES IN HOSTILE ENVIRONMENTS THROUGH INNOVATION.

More than 700 natural disasters have taken place since 2010, affecting more than 450 million people worldwide. Official records show that the yearly number of climate related catastrophic events have grown by more than 450% since 1970.

**In a world facing an uncertain future, you can be certain that BCB's team and resources stand ready to support you.**

## IN THE BEGINNING

In 1854 Dr Brown invented a cough medicine.

So successful was it, in 1914 he registered the company as BCB after its name - Brown's Cough Bottle.

## QUALITY

Behind each product are many years of tireless care and attention to quality. BCB's experience means you can be assured that you are getting quality and proven products that meet the highest possible standards.

## INNOVATION

BCB's Continuous and Never Ending Innovation Policy (CANEI) has resulted in hundreds of quality innovative products, many of which were and continue to be developed in partnership with those who travel to the extremes

Dependent on feasibility, BCB will consider the possibility of designing and developing free of charge new products. Contact our research & development team for more information at [info@bcbin.com](mailto:info@bcbin.com).

*BCB International Ltd is an ISO 9001:2008 approved company.*



BCB are honoured to have been awarded two Queen's Awards for Export Achievement.



BCB have received three Soldier Technology awards for innovation.



BCB International Ltd,  
Clydesmuir Road, Cardiff, UK, CF24 2QS

Tel: +44 (0) 29 2043 3700

Fax: +44 (0) 29 2043 3701

email: [info@bcbin.com](mailto:info@bcbin.com)



BCB HQ and production, Cardiff, United Kingdom



BCB FireDragon production, Llanelli, United Kingdom



GSA

**FOIL HYPOTHERMIA BLANKET**

**CODE: CL041**

The lightest and most compact blanket in our range. Truly pocket sized it assists in the retention of up to 90% radiant body heat.

Available in plain silver or with an olive outer.

- Lightweight foil sheet

**Size:** 202cm x 132cm (84"x 54")

**Weight:** 50g (1.7oz)

**NATO approved:** NSN-7210-99-991-0460



**EMERGENCY FOIL PONCHO**

**CODE: CL202**

Ideal to keep in your bag, car or pocket just in case you get caught out.

- Integral hood helps maximize body heat retention
- Pullover style provides maximum protection without restricting movement.
- Compact and lightweight
- Radar reflective properties
- One size fits all

**Size:** 104 x 94cm (41"x 37")

**Weight:** 92g (3oz)



GSA

**EMERGENCY SLEEPING BAG**

**CODE: CL520**

A medium gauge, full size, polythene sleeping bag. Compact and lightweight it is ideal as a shield against the elements or as a waterproof outer layer for a sleeping bag.

- 160 gauge (medium) polythene
- Vacuum packed

**Size:** 10cm x 20cm x 3cm (4"x 8"x 1")

**Weight:** 140g (5oz)

**NATO approved:** NSN-8465-99-138-3533



GSA

**PRINTED SURVIVAL BAG**

**CODE: CL044**

A highly visible, heavy duty, full sized poly bag printed with survival information covering fire making, navigation and shelter.

- 500 gauge heavy duty poly-bag
- Highly visible day-glo orange colour

**Weight:** 345g (12.1oz)

**NATO approved:** NSN-8465-99-684-4041



## THERMAL PROTECTIVE AID

**CODE: MF206B**

Ideal as an emergency hypothermia bag, or as an extra emergency cover to go over your sleeping bag.

- Over the head hood and zipper fronted
- One size fits all
- Compact and lightweight

**Folded Size:** 20 x 30cm (7.8 x 11.8)

**Weight:** 210g (7.5oz)



## SURVIVAL ESSENTIALS KIT

**CODE: CK701**

A versatile and lightweight survival kit. The ultralight dry bag keeps the weight down and helps keep your kit safe and dry.

- round boot laces
- LED micro torch
- Hypothermia space blanket
- Hunters micro tool
- Fireball flint and striker (Grand)
- White nylon cord
- Nightlight
- Sewing kits
- Fishing kit
- Wire saw
- Waterproof matches c/w striker
- Duck tape
- Distress whistle
- BCB survival instructions
- Cotton wool balls
- 2" Mayday signal mirror
- Ultralight dry bag (Lime green, 1 litre)

**Weight:** 360g (12.6oz)



## STAFF TRAVEL KIT

**CODE: CS012**

Packed in a strong aluminium case or in a strong carrying case.

- Mosquito net x 1
- Sleeping bag x 1
- Pillow & pillow case x 1
- Water bottle x 1
- First aid travel kit x 1
- Plate, bowl, knife, fork, spoon, mug x 1
- Torch / lantern x 1
- Pain poncho with hood x 1
- Cooker canteen (0.9ltr) x 1
- Towel x 1
- Personal water filter x 1
- Compass x 1
- Pen & note pad x 1
- Sewing kit x 1
- Puritabs (2 x 50's) x 1
- Disposable mask x 5
- Bag (strong PVC, Navy blue) x 1

**Size:** 57 x 36 x 30cm

**Weight:** 22kg



## EMERGENCY STAFF KIT

**CODE: CS011**

Packed in a strong aluminium waterproof case.

- Insect repellent x 2
- Straw water filter x 1
- Rubber gloves (Pair) x 1
- Foot covers (pair) x 1
- Whistle x 1
- Sewing kit x 1
- Rope (nylon-8mm dia / 10m length) x 1
- Scotch tape x 1
- Masking tape x 1
- Mirror x 1
- Assorted elastic bands (pack) x 1
- Plastic food container x 1
- writing materials x 1
- Multi purpose poncho with hood x 1
- Towel (70 x 140cm) x 1
- Aluminium cooking foil x 1
- Sleeping bag (suitable up to -6°C) x 1
- Sleeping bag sheet x 1
- Foam bedding roll x 1
- Camping mat x 1
- Emergency blanket x 1
- Pillow + pillow case x 1
- Camp cooking set (saucepans x 2, frying pan, kettle, plastic plates, cups, steel cutlery & pouch for dishes) x 2 sets
- Disposable plates, cups, cutlery x 20
- Plastic bag (25ltr) roll x 1
- Toilet paper (rolls) x 4
- Compass x 1
- Paper tissues (10 x 10pcs) x 1
- Soap & soap box x 2
- Swiss army knife x 1
- Candle x 2
- Head torch x 1
- Torch/lantern x 1
- Flexible water bag x 1
- Cooler canteen (1ltr) x 1
- Tool kit x 1
- Bag pack (900gm) x 1
- Collapsible camp bed x 1
- Mosquito net x 1
- Portable shower x 1
- Shower screen x 1
- Water bottle (1.15 ltr) x 1
- Pocket water filter x 1
- Safari vest x 1
- Scissors x 1
- Universal electric plug adaptor x 1
- Tent (personal) x 1
- Adhesive dressings (assorted) x 1
- Water purifying tablets x 1

**Size:** 88 x 80 x 60cm

**Weight:** 45kg (approx)



**TREKKING ESSENTIALS KIT**

**CODE: CK700**

A versatile and lightweight trekking kit. The ultralight dry bag keeps the weight down and helps keep your kit safe and dry. A durable buckle secures the roll-top closure and acts as a grab handle.

**Contents\*:**

- round boot laces ▪ led micro torch ▪ emergency poncho
- petroleum jelly ▪ nightlight ▪ sewing kits ▪ mini folding knife ▪ waterproof matches c/w striker ▪ duck tape ▪ black cable tie ▪ distress whistle ▪ waterproof sterile plasters ▪ wound dressing ▪ zinc oxide tape ▪ ultralight dry bag (blue, 1 litre) ▪ paracord

**Weight:** 253g (8.9oz)



**72 HOUR SURVIVAL KIT**

**CODE: CK047**

**Contents\*:**

- tommy cooker ▪ 2" mayday signal mirror ▪ hypothermia space blanket
- emergency poncho ▪ 24 in 1 tool kit ▪ insect repellent 25g stick ▪ personal first aid kit ▪ oxford note pad & pencil ▪ cleansing wet wipes ▪ 15ml steridex hand cleaner ▪ can openers ▪ duck tape ▪ survival bag ▪ paracord ▪ lifesaver 1 first aid kit ▪ fire dragon gel fuel 250ml ▪ cut resistant gloves ▪ emergency preparedness guide ▪ bucket ▪ accident evaluation report ▪ single edged razor blades ▪ white nylon cord (1 mtr) ▪ nightlight ▪ pencil ▪ sewing kit ▪ gold wires 12ft ▪ fishing kit ▪ wire saw ▪ distress whistle ▪ flint & striker ▪ survival instructions safety pins ▪ grip seal bag



**WINTER EMERGENCY KIT**

**CODE: CK045**

A must have item for motorists, householders and remote workers when the weather takes a turn for the worse.

**Contents\*:**

- cooking tin ▪ fire dragon fuel blocks x 2 ▪ emergency sleeping bag ▪ led torch
- folding cooker ▪ distress whistle ▪ button compass ▪ nightlight
- poncho with hood ▪ hypothermia blanket ▪ mini grip bag ▪ matches
- antiseptic wipes ▪ drinking pouch (400ml) ▪ karabiner ▪ pencil



**MOUNTAIN SURVIVAL TIN**

**CODE: CK019L**

This is an upgraded vacuum-packed version of the combat survival tin.

**Contents\*:**

- water resistant tin ▪ vinyl tape ▪ button compass ▪ knife ▪ matches ▪ pencil
- purification tablets ▪ snare wire ▪ candle ▪ fireball flint & striker ▪ fishing kit
- whistle ▪ sewing kit ▪ safety pins ▪ wire saw ▪ signal mirror ▪ tin hanging handle ▪ tinder ▪ water bags ▪ single edged razors ▪ adhesive plasters ▪ survival instructions ▪ accident evaluation form

**Size:** 11 x 8 x 2.8cm (4.5" x 3 x 1")

**Weight:** 220g (7.7oz)



GSA

## MOSQUITO HEAD NET

CODE: CL2252A

A fine weave anti-mosquito head net. Protects from mosquitoes, gnats, midges, horse flies, ticks, tsetse fly and most other biting insects. Features adjustable head cord. Can be worn over most military head dress

- Small enough mesh to stop sand flies
- Very comfortable to wear.

Size: one size fits all.

Colour: olive green



## HAND WARMERS (X 2)

CODE: CL281 (40 PAIRS)

CODE: CL281A (LOOSE)

CODE: CL281B (48 PAIRS)

Opening the sealed packaging lets oxygen react with the bag. Within a minute they release constant heat. Typically these packs are used for comfort, increasingly however, they are used in rescue operations where a survivor is trapped in a cold or exposed place.

- Hand warmers (40 pairs per box)

Working temp: 57°C to 70°C

Duration of max. heat: 7 hours



GSA

## WILDLIFE™ INSECT REPELLENTS

CODE: CL123 TROPICAL 100 SPRAY: 100% DEET - 75ML

CODE: CL127 COMPACT 40 STICK: 50% DMP - 25G

Wildlife Insect Repellents provide protection against mosquitos, gnats, midges, horse flies, ticks, tsetse fly and most other biting insects.

- Contains DEET
- Long lasting (up to 10 hours)
- Sold in attractive display box of 24 units



## BODY WARMERS

CODE: CL280 (40 PACKS)

CODE: CL280A (LOOSE)

Opening the sealed packaging lets oxygen react with the bag. Within a minute they release constant heat. Typically these packs are used for comfort, increasingly however, they are used in rescue operations where a survivor is trapped in a cold or exposed place.

- Body warmers (40 per box)

Working temp: 50°C to 65°C

Duration of max. heat: 20 hours



**STERIDEX HAND CLEANSER**

**CODE: CL450A**

This non-toxic gel is the ultimate hygiene companion when outdoors. Packed in a new handy pump action plastic container.

- The anti-bacterial formula has an alcohol base which evaporates, leaving no sticky residue.
- Environmentally friendly
- Does not freeze

**Capacity:** 50ml

*Passes EN12054 hand rub test.*



**CONCENTRATED BODY SOAP**

**CODE: CS134A**

A highly concentrated body and hair gel, which lathers both in fresh and salt water.

- Environmentally friendly

**Capacity:** 50ml



**TWIST RAZOR**

**CODE: CS613**

Housed within a robust sheath a simple twist reveals the blade.

- Just twist the base to reveal the razor.

**Weight:** 20g (1oz)

**Size folded:** 8cm x 2cm (3 x 1")



**ULTRA LIGHT FIBRE TOWEL**

**CODE: CJ003G**

Fine micro fibre towel, terry woven (looped pile). It is highly absorbent, super soft lightweight material. Packs small, and has the absorbency of a much larger towel. Absorbs over 5 times its own weight

**Color:** Olive

**Size:** 40cm x 80cm (16" x 32")



**SOLAR SHOWER**

**CODE: CR006**

Solar heated black vinyl absorbs heat, warming the 20 litre flexible reservoir. This portable light weight shower is easily packed and stored.

- On/off spray setting
- Non-toxic durable PVC
- NATO Approved
- 700mm flexible tube and shower head

**Capacity:** 20 litre (5 gallon)

**Size open:** 58 x 40 x 4cm (22.8 x 15.7 x 1.6")

**Size folded:** 35 x 18.5 x 6cm (13.8 x 7.3 x 2.4")

**Weight:** 278g (9.8oz)



**BABY PARCEL**

**CODE: H0461**

Designed for one baby for approximately 2 months.

Contents:

- Blanket x 1
- Washing powder (3kg) x 1
- Baby soap x 2
- Hair Shampoo (1 litre bottle) x 2
- Baby lotion x 3
- Baby powder x 1
- Washable diapers x 12
- Diaper pants (plastic) x 1
- Thermometer x 1

**Weight:** 6.4kg

**Size:** 370 x 30 x 26cm

## PERSONAL PROTECTIVE EQUIPMENT (PPE)



### FAMILY / TRAVELLER PPE KIT

CODE: EB019

A complete low cost kit for people who may be near an infected area or come into contact with infected patients. Packed in a simple poly bag.

- Latex gloves x 2 pairs
- Nitrile Synthetic Goves x 1 pair
- Microchem 3000 coverall x 1 (*Full face respirator not included*)
- Overboots x 1 pair
- Gas safety goggles x 1
- Steridex hand cleaner x 1
- Disposable face mask x 1 (pack of 10)



### ADVANCED CARER PPE KIT

CODE: EB020

A comprehensive high specification kit. Includes full face mask. Packed in a small day sack.

- Latex gloves x 4 pairs
- Flexible PVC Gauntlet gloves x 1 pair
- Disposable bib aprons x 2
- Type 5/6 hooded coverall x 2
- Disposable arm cover x 2 pairs
- Full face respirator x 1
- Face respirator filter cartridge x 1
- Steridex hand cleaner x 3



### LATEX GLOVES

CODE: RK006L

Examination gloves provides an excellent biological barrier. They are not intended as a chemical barrier.

- Latex gloves
- Can be used as an under-glove
- Powder free
- 100 per box

Size: large



### NITRILE SYNTHETIC GLOVES

CODE: EB002

- Nitrile synthetic rubber glove - flock lined
- Offers good abrasion resistance as well as protection against a wide range of chemicals.
- Good grip wet or dry
- The soft cotton flock lining absorbs perspiration and keeps hands cool.
- Reusable and Latex free
- Working environments: Indoor, wet, dry, oil and grease, clean, dirty
- High level of grip and dexterity

EN374-2: Resistance to penetration by micro-organisms

EN374-3: Resistance to chemical hazards (permeation)

EN388: Resistance to Mechanical Hazards



### FLEXIBLE PVC GAUNTLET GLOVES

CODE: EB001

Provides excellent chemical resistance to a wide range of chemicals including acids, hydrocarbons and oils

- Double dipped finish for grip
- Seamless cotton liner for comfort with and anti-bacterial treatment to reduce odours

Size: 10





**SHARPS DISPOSAL KIT BOX**

**CODE: EB004**

For safe disposal of sharps. Includes all necessary gloves, forceps, wipes, bin and disinfectants.

- Carry case (yellow)
- Safe hand stitch stop gloves (pair)
- Spare outer liners (pair)
- Dermatril gloves (pair)
- Sharps bin (0.6L)
- Sharps bin (0.1L)
- Disinfectant spray (30ml)
- Disinfectant wipe
- Polypropylene forceps
- Stainless steel forceps



**BODY FLUID SPILL KIT**

**CODE: EB006**

Meets current Health and Safety requirements to contain a biohazard spill. Designed for 'in-door' and 'out-door' body fluid spills.

- 5 x Pads
- 5 litres XR101 'anti bacterial' granules
- 240 grams XR105 'anti-bacterial' powder
- 0.5 litre 'Sanitising' solution
- Anti-bacterial wipes
- 1 x Scoop
- 1 x Scraper
- 4 x Pairs gloves
- 4 x Disposable aprons
- 4 x bags and ties

**Size:** 300x130x440mm



**BODY FLUID/SHARPS KIT**

**CODE: EB003**

Complete 2 in 1 sharps and body fluid kit. Provides safe disposal of body fluid spillages such as urine, vomit and blood.

- 2X sharps disposal packs
- 5X biohazard disposal kits
- 1X 500ml disinfectant trigger spray
- 1X 100g absorbent granules
- 69 Pieces total in the kit



**BODY FLUID CLEAN UP KIT**

**CODE: EB005**

This kit contains a single application clean-up pack, for the safe handling, containment and disposal of infectious micro-organisms contained in blood, vomit, urine, mucus, faeces and semen.

- Meets the current Health and Safety requirements.

*Contents:*

- 1 x Disinfectant spray (8ml)
- 1 x Absorbent granules (10g)
- 1 x Disposable gloves (pair)
- 1 x Polythene apron
- 1 x Scoop/scraper
- 2 x Dry wipes
- 1 x Biohazard bag
- 1 x Disinfectant wipe
- 1 x Pack tissues (10)



**DISPOSABLE PAPER FACE MASKS - WHITE (PACK 10 PCS)**

**CODE: EB016**

- Supplied in packs of 10 pieces
- Perfect for areas where hygiene is of great importance.
- 2 ply
- Lightweight
- Elastic ear loops



**STERIDEX HAND CLEANER**

**CODE: EB007**

This non-toxic gel is the ultimate hygiene companion when outdoors. Packed in a new handy pump action plastic container.

- The locking cap makes sure it doesn't discharge accidentally
- The anti-bacterial formula has an alcohol base which evaporates, leaving no sticky residue.
- Environmentally friendly
- Does not freeze

**Capacity:** 50ml

Passes EN12054 hand rub test.



## MICROCHEM® 3000 COVERALL

CODE: EB012

- Yellow
- 2 piece hood
- Double zip closure
- Double cuffs
- Elasticated hood, wrists and ankles
- Integrated socks with boot overflap
- Sizes M - XXL
- Approved to:
  - EN14605 Type 3 Liquid-tight
  - EN14605 Type 4 Spray-tight
  - EN1149-5 Anti-static
- EN ISO 13982-1 Type 5 (Particulate protection)
- EN1073-2 Barrier to radioactive particulates (Class 1)
- EN14126 Barrier to infective agents
- Applications include:
  - Chemical handling or transportation / Oil and petrochemicals / Pharmaceutical / Land reclamation and clean up / Agrochemical handling / Food industry caustic clean downs



## DISPOSABLE BIB APRONS

CODE: EB017

Pack of 100 disposable aprons in a poly pack.  
Manufacture from opaque polythene.

Colour: White / blue / green / red / yellow  
Size: 690x1066mm (27x42")



## TYPE 5/6 HOODED COVERALL

CODE: EB011

- Conforms to EN 14126 Category 3. Type 5 Type 6. EN 1149-5 EN1073-2
- CHF5 - Setting a new standard of protection in the type 5/6 category.
- Offers superior liquid protection thanks to a new patent pending seam technology.
- Passes the new and more stringent type 6 norm against liquids.
- Demonstrates significantly less leakage than conventional stitched seams even under the new and more aggressive type 4 test.

Colour White

Sizes small – XXX Large



## OVERBOOTS

CODE: EB008

- Conforms to EN 14126
- Slip retardant sole
- Leg ties
- Anti-static treatment.

Colour: White

Height: 48cm

Size: One size only



## DISPOSABLE ARM COVER

CODE: EB010

- Conforms to EN 14126
- Elasticated both ends



## DISPOSABLE HOOD

CODE: EB009

- Conforms to EN 14126
- SL600TY Flange assembled with the overcasting
- Elastic around the neck and the face
- Inside seams.

Colour: White

Size: One size fits all



## DISPOSABLE OVERSLEEVES

CODE: EB018

Offering simple, effective protection, these oversleeves are great for food handling and wet work tasks.

- Low density polyethylene
- Generous dimensions
- 50 pairs



## GAS SAFETY GOGGLES

CODE: EB015

Non-vented body hugging. Forms a sealed unit on the face to protect against gases as well as liquid droplets and dusts. Tough coated polycarbonate anti-mist lens eliminates misting as well as protecting the wearer from flying particles. Suitable for molten metal.

- Conforms to EN 166.1.B 3.5.9



## FULL FACE RESPIRATOR

CODE: EB013

- Conforms to EN 136
- User friendly inner mask
- High performance speech diaphragm
- Soft, comfortable silicone
- Excellent field of vision
- Filters sweep back each side - exceptional balance



## FILTER CARTRIDGE

CODE: EB014

- Conforms to EN 143:2000/A1 and EN 14387
- To fit the Full face respirator
- 053070 - P3 solid and liquid particles.
- Unit Pack of 2



**LIFESAVER #1**  
**BASIC FIRST AID PACKS**

**CODE: CS111**

The Lifesaver #1 is a large pocket size kit for day trips.

**Contains:** Antiseptic Wipes x 2, Adhesive Dressings x 10, Suture Plaster, Medium Wound Dressing, Paraffin Gauze Burn Dressing, Triangular Bandage, Knuckle "H" Shaped Bandage, White Open Weave Bandage, Medical Gloves (Pair), Set of Safety Pins, Scissors, Accident Evaluation Report, Crepe Bandage, Instruction Leaflet.



**LIFESAVER #2**  
**INTERMEDIATE FIRST AID PACKS**

**CODE: CS110**

The Lifesaver #2 intermediate kit is for longer journeys and larger groups of people.

**Contains:** Antiseptic Wipes x5, Adhesive Dressings x10, Suture Plaster, Medium Wound Dressing, Paraffin Gauze Burn Dressing Weave Bandage, Medical Gloves (pair), Set of Safety Pins, Scissors, Microporous Adhesive Tape, Accident Evaluation Report, Hospiform Bandage, Instruction Leaflet, Isotonic Drink.



**KIT FOR NEW MOTHERS**

**CODE: UH040**

Packed in a clean folding plastic bucket:

**Contains:** 0.5 ltr bottle of alcohol/spirits x 1  
 • Soap x 1 • Nail brush x 1 • Baby scissors x 1  
 • Various syringes & needles for vaccinations x 1  
 • 1ml syringe with regular adult needle x 1 • 2ml syringe with regular needles x 1 • Clean cord (Strip of cotton) x 1 • Razor blade x 1 • Small plastic bowls x 2 • Cotton cot size sheet x 2  
 • Rubber gloves (pair) x 2 • Pack gauze x 1  
 • Bag/container to hold all of the above x 1

**Weight:** 0.95kg (2 lbs)



**LIFESAVER #3**  
**ADVANCED FIRST AID PACKS**

**CODE: CS115**

The Lifesaver #3 advanced kit, which can be used as the basis for an expedition medical kit.

**Contains:** Resuscitation device, Isotonic drink, 5 antiseptic wipes, Large crepe bandage, Small crepe bandage, Wound dressing No.8, Eye dressing No.16, Conforming bandage, Hospiform bandage, Anchor dressing, Large ambulance dressing, 10 assorted adhesive dressings, 2 paraffin gauze dressing, Triangular bandage, 6 safety pins, Pair of scissors, Pair of tweezers, Strip fabric dressing, Pair of disposable gloves, Microporous adhesive tape, 5 Sutures, Accident evaluation report, Instruction leaflet



**LIGHTWEIGHT FIRST AID KIT**

**CODE: CK702**

A versatile and lightweight first aid kit. The ultralight dry bag keeps the weight down and helps keep your first aid kit safe and dry. A durable buckle secures the roll-top closure and acts as a grab handle.

**Contents:** Accident evaluation report, Large disposable gloves, Folding scissors, Waterproof sterile plasters, Anchor dressing, Antiseptic wipes, Safety pins, Conforming bandage, Paracetamol, Triangular bandage (non woven), Dressings, Wound closure strip, Hospiform bandage, First aid hints, Ultralight dry bag (red, 1 litre).

**Weight:** 108g (3.8oz)



## FIELD DRESSING

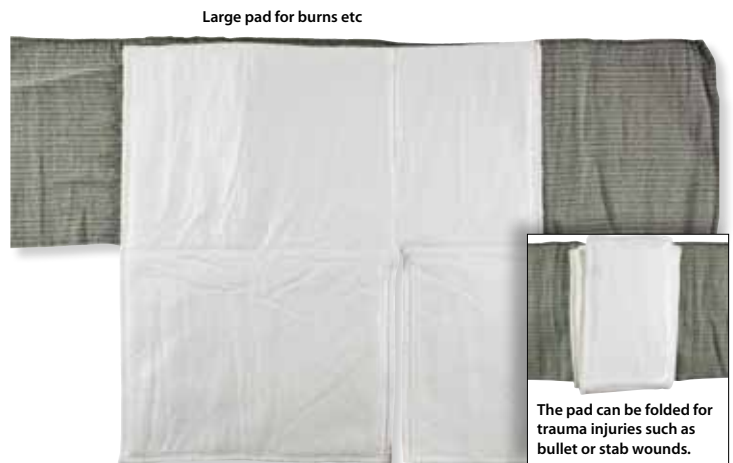
Large dressings sealed in a robust flexible waterproof pouch maintaining sterility and shelf life.

- Can be folded in several different ways to give excellent compression to stop bleeding wounds.

Size	Pad size	Code	Weight
Large	20 x 19cm (8 x 7.6")	PF116	98g (3.5oz)
Small	10 x 19cm (4 x 7.5")	PF118	60g (2.1 oz)

Large  
NATO approved  
NSN-6510-99-210-7563

Small  
NATO approved  
NSN-6510-99-210-7562



## STERILE BURN DRESSING

CODE: PF117

- Highly absorbent dressing pad
- Compression bandage
- Securing velcro
- Camouflage coloured bandage and packaging
- Provides immediate direct pressure to the wound to help stop bleeding
- Quick and easy for personal or professional application
- Trauma dressing with heavy duty compression bandage

Pad size: 30 x 30cm (11.8 x 11.8")

Bandage size: 15 x 130cm (5.9 x 51")



## ANTI-TICK KIT

CODE: ADV025

Contents\*:

- tweezers
- alcohol free cleansing wipes x 4
- adhesive dressing x 10
- pouch



## FIELD FIRST AID KIT

CODE: CS149

**Contains:** Sodium Chloride Dextrose (25ml) x 10 • Paraffin guaze burn dressings (10 x 10cm) x 40 • Paraffin guaze burn dressings (10 x 10cm) x 20 • W.O.W bandages (7.5cm) x 24 • Flamazine cream (50gm) x 2 • Extra large wound dressing x 12 • Large wound dressing x 12 • Medium wound dressing x 12 • Sterile eye dressing x 18 • Triangular bandage x 20 • Zinc oxide plaster x 3 • Assorted waterproof plasters x 100 • Steristrips x 5 • Crepe bandage x 6 • Clean gloves (pair) x 5 • Scalpel x 1 • Forceps x 5 • Mucus extractor x 3 • Antiseptic injection wipes x 50 • Sterile guaze swabs (10 x 10cm) x 6 • Suture set x 2 • Tourniquet x 1 • Multipurpose splint set x 1 • Artery clamp 5" spencer wells x 1 • Scissors 12.5cm stainless steel x 1 • Syringe (5ml) x 4 • Needles x 30 • Foil blanket x 2 • Safety pins (6's) x 2 • Antiseptic cream (50gm) x 2 • Paracetamol tablets (50's) x 2

Weight: 11.6kg

Size: 58 x 35 x 34cm



## HEEL HEAL BLISTER KIT

CODE: CS47209

Comfortable, slim and effective patches, for treating/preventing blisters. Can be cut and shaped to fit over heels or between toes etc.

**Contents:** 4 sterile blister/wound patches 5 x 5cm (1.9 X 1.9"), Pressure pads (self adhesive) 30cm x 7.5cm (11.8 x 2.9"), Plaster roll 1.25cm x 5m, Folding scissors, Petroleum jelly, Instructions.



## ISOLAIDE

CODE: CS122

Mouth to mouth resuscitation device. One way valve prevents cross contamination.

## CUSTOM MADE MEDICAL KITS

We can make any kit to your specification quickly, reliably and to a very high quality.



**RELEQUIP FOLDING STRETCHER**

**CODE: MF446**

The Relequip stretcher is a duo-fold design, allowing a normally bulky item to require minimum storage space when not in use. The stretcher folds both horizontally and vertically into the compact dimensions shown below. The frame, manufactured from aluminium, is both strong yet lightweight. The stretcher bed is produced from a tough PVA material that is resistant to fluid and is extremely easy to clean. Once locked open, the frame ensures the patient is kept clear of the ground. A stretcher is considered a basic item in any first aid room, and is listed as a desirable and essential item by the HSE.

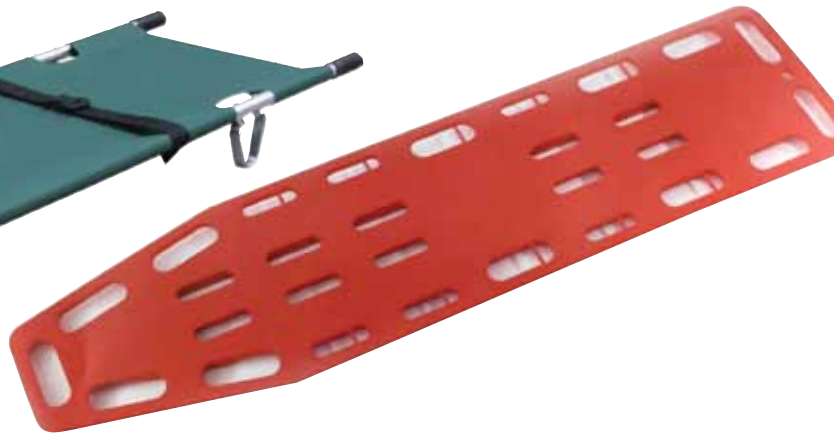
- High strength aluminium alloy frame
- Waterproof, fireproof, anti-cracking material
- Complete with fully zipped carry bag and straps
- Hi-Vis Orange
- Easy to clean

**Size open:** 14 x 52 x 206cm (5.5 x 20.4 x 81.1")

**Size folded:** 10 x 18 x 103cm (3.9 x 7 x 40.5")

**Weight:** 5.5kg (12.1lbs)

**Maximum Load:** up to 159kg (350.5lbs)



**RELEQUIP SPINAL BOARD**

**CODE: MF447**

Spinal Boards in various forms, have remained the gold standard of post-trauma management where damage to the spine or neck is established, or suspected.

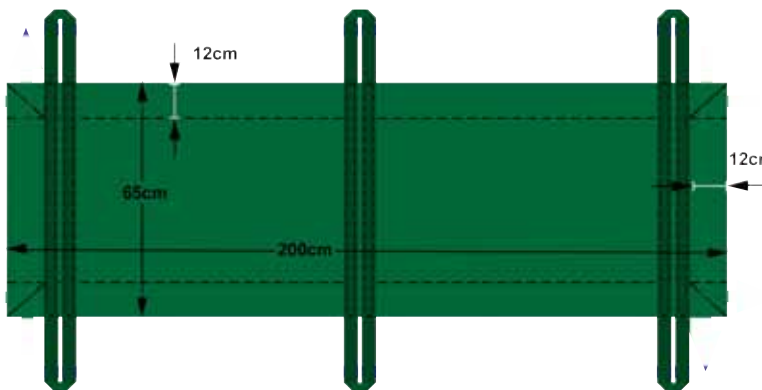
The product is an essential item for any emergency professional and is invaluable in avoiding further injury by immobilising the patient prior to transit. A standard item on every NHS ambulance, spinal boards also have a wide range of uses in the Workplace, Schools, Swimming Pools, Sports Centres, and Funeral Services.

- Hi-Vis Orange PE material spinal board
- Can also be used with head immobiliser
- X-ray compatible, due to its translucent properties
- Offers full body immobilisation
- High density, polyethylene plastic
- Impervious to bodily fluids
- Easy to clean

**Size:** 5 x 46 x 184cm (1.9 x 18.1 x 72.4")

**Weight:** 7kg (15.4lbs)

**Maximum Load:** up to 159kg (350.5lbs)



**LIGHTWEIGHT CARRY SHEET**

**CODE: CS019**

A lightweight and compact carry sheet designed for emergency personnel evacuation. Carried via six large, wrap-around hand loops. Alternatively, carry using poles that can be fed through wide support channels (see blue arrows). Features wide carry straps for comfort when carrying.

- 6 x wrap around hand loops

**Measurements:** 37cm x 29cm (14.62" x 11.4")

**Weight:** 525g (18.5oz)



**FOLDING STOOL**

**CODE: MF512**

- Simple to deploy in 15 seconds
- Tested to BS EN581-PT1-PT2 | BS EN 16139
- Supports bodyweight to def Stan 00-250 Part 3 section 9
- Stable when used on moderately uneven ground.
- One man carry
- Robust enough to withstand the stress and strain of continual usage in a hostile environment
- Flame retardant
- Stackable
- Anti liquid absorbent
- Ten year service life
- Free of all sharp edges and burrs

**Size unpacked:** 460 x 550 x 400 mm

**Size folded:** 700 x 400 x 60 mm

**Seat Pad Canvas:** 44cm x 26cm

**Weight:** 1.3kg

**NATO approved:** NSN-7105-99-383-2180



### WHITE BODY BAGS - ECONOMY

**CODE: CS617**

This PVC body bag construction is ideal for the safe transportation of bodies due to its non-porous plastic shell. Can also be used for storage of bodies. White body bags in our economy range feature a central zip running from head to foot for easy placement and access to bodies.

**Size:** 2050 x 800 mm (80.7 x 31.4")



### EXTRA HEAVY DUTY BODY BAG

**CODE: CS618**

Plastic, extra heavy duty body bags are perfect for crime scene recovery, emergency medical recovery, and transportation. Features 6 grab handles for easy transportation with A4 size document pocket. The U-shaped, envelope style zipper and reinforced seams helps to reduce odour and increases body substance isolation.

**Size:** 2160 x 900 mm (85 x 35.4")



### PVC HEAVY DUTY BODY BAG - CENTRE ZIP

**CODE: CS619**

PVC, heavy duty body bags feature a clear, A4 size document pocket. The centre zip running head to foot and reinforced seams helps to reduce odour and increases body substance isolation.

**Size:** 2200 x 900 mm (86.6 x 35.4")

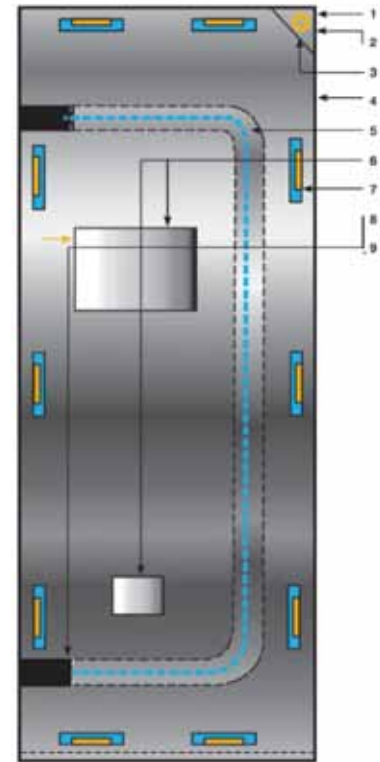


### PVC HEAVY DUTY BODY BAG - U-SHAPE ZIP

**CODE: CS620**

Black PVC, heavy duty body bags with U-shaped zipper and reinforced seams helps to reduce odour and increases body substance isolation. Also features a clear, A4 size document pocket.

**Size:** 2200 x 900 mm (86.6 x 35.4")



### EXTREME HEAVY DUTY BAG

**CODE: CS120**

- Overall Dimensions:** Length = 2.25m (88.5"), Width = 1.07m (42")
- 15mm Eyelet positioned in top right hand corner with water-tight HF welded seal
- Folded edge (left and right sides) giving a watertight seal.
- Construction:** High frequency welded seams at top and bottom giving watertight seal.
- Materials:** Heavy Duty 0.38mm PEVA - No. 5 Polyester Spiral Zip with 2 Nickel plated Ring pull sliders (running head to head)
- Clear 0.1mm gauge I-D Document Pocket, size: 15cm x 10cm (6" x 4") and A4 size document pocket. Opened from left hand side.
- High frequency welded Grab Handles as standard.
- Double skinned strip of PEVA material to cover zip ends - stitched down across zip tape to seal off tunnel opening.

**Size:** 2.25 x 1.07m (88.5 x 42")



**24 HOUR WET RATION**

**CODE: CP4220**

Halal option available

- Tin of tuna x 1 ▪ Tinned fruit x 1 ▪ Mint cake x 1 ▪ Oatmeal block x 1 ▪ Salt sachets x 6 ▪ Can opener x 1 ▪ Knife, fork & spoon x 1 ▪ Chocolate drink x 1
- Teabags x 2 ▪ Coffee sachets x2 ▪ Creamer sachets x 4 ▪ Sugar sachets x 4
- Lemon fresheners x 2 ▪ Pkt 10 tissues x 1

**Size:** 26.4 x 17.6 x 8.6cm (10.4 x 6.9 x 3.4")

**Weight:** 1.6kg (3.5lbs)



**RED CROSS RATION**

**CODE: UR003**

Halal option available

- Tin of Sardines x 1 ▪ Tin of Potatoes x 1 ▪ Oatmeal block x 1 ▪ Millenium bar x 1
- Can opener x 1 ▪ Knife, fork & spoon x 1 ▪ Recovery drink x 1 ▪ Teabags x 1
- Coffee sachets x 2 ▪ Sugar sachets x 2 ▪ Creamer sachets x 3 ▪ Salt sachets x 1

**Size:** 21.6 x 17.5 x 8.7cm (8.5 x 6.9 x 3.4")

**Weight:** 1.1kg (2.4lbs)



**EMERGENCY RATION PACK VI**

**CODE: CP670**

A compact hermetically sealed aluminium package, which can be used as a brew pot, containing high energy food, coffee set, fuel, purification tablets, compact survival items and instructions.

- Long shelf life.
- Energy: 900 Kcal approx

**Size:** 17.5 x 23 x 5cm (7 x 9 x 2")

**Weight:** 280g (10oz)



**EMERGENCY BELT ORDER RATION (24 HOUR)**

**CODE: CP003**

A compact ration pack.

- Condensed survival bar (high calorie)
- Isotonic gel sachet
- Glucose energy tablets
- Chewy cereal bar
- 2 x salt sachets
- Water purification tablets
- 3 in 1 coffee drink, sugar and milk.
- 2 x stock cubes
- Energy: 630 Kcal approx

**Size:** 17.3 x 22.9cm (6.8 x 9")

**Weight:** 318g (11.2oz)



### MILLENNIUM ENERGY BAR

CODE: RF0014 (CHERRY)

CODE: RF0014R (RASPBERRY)

Available in 2 natural flavours. Cherry or raspberry. Each packet contains a fortified long life food bar.

- Vacuum packed
- 3 Year shelf life
- Energy: 409 Kcal

Size: 16 x 6 x 1.5cm (6.3 x 2.4 x 0.6")

Weight: 84g (3oz)



### EMERGENCY DRINKING WATER

CODE: CP018

Superior quality drinking water manufactured in accordance with stringent demands for hygiene and under the surveillance of the Norwegian health Authorities. The product is internationally approved.

The half litre pack contains five units of 100ml (2 x 50ml), for easy portioning. It is also usable in a frozen condition. The flexible packs offer minimum weight and are easy to stow in lifeboats and liferafts.

- Applies to the SOLAS LSA Code Chapter IV 4.1.5.1.19 and 4.4.8.9

Size: 2 x 5 x 50ml | 16.9 fl.oz | 500ml



### EMERGENCY FOOD RATION FOR LIFEBOATS AND LIFERAFTS

CODE: CP005

To provide a balanced diet for survival at sea, approved world wide for use onboard lifeboats and liferafts. The high quality packaging also includes directions for use in 14 different languages.

- Eat directly from the box.
- Contains the highest possible ratio of balanced nutrition compared to volume.
- 3 layer alu-foil packaging.
- 5 years shelf life
- Exceeds SOLAS requirements.

Size: 500g net

Energy: 10,300 kJ / 2,500 kcal.



### COMPACT EMERGENCY FOOD

CODE: CP006

The Compact Emergency Food is a ready-to-eat food of high nutritional value. Compressed into bars of 255 calories, BP-5™ contains the highest possible ratio of balanced nutrition compared to volume.

Its optimal logistical qualities secure an easy, safe and efficient transportation, distribution, and usage. It has a 5 year shelf-life which enables organizations to use it in their preparedness stocks even under extreme conditions.

- 5 year shelf-life
- Ready to eat
- High nutrition value
- Easy, safe & efficient to transport





**PLASTIC SPORK**

**CODE: CN229**

A fork and spoon in one. It features a hook for easy organization. Perfect for outdoor use.

- Multiple colours available
- Easy to clean

**Size:** 16.5 x 3.9 x 0.4 cm (6.50 x 1.54 x 0.16")

**Weight:** 8g (0.28 oz)



GSA

**CAN OPENERS**

**CODE: CN225**

- Two per pack

**Length:** 5cm (2")

**NATO approved:** NSN-7330-99-549-6287



**LIGHTWEIGHT KFS SET**

**CODE: CN1446**

The traditional camping knife, fork and spoon set. the knife & fork clip onto rivets on the spoon handle.

- Bottle opener on knife

**Weight:** 75g (2.7oz)



**KFS SET WITH CAN OPENER**

**CODE: CN224**

A knife, fork, spoon and can opener set that slides neatly together.

- Strong
- Stainless steel

**Weight** 87g (3oz)

# DRAGON MULTI-FUEL COOKING SYSTEM

The Dragon Cooking System from BCB is ideal for all humanitarian aid missions. The system packs neatly into itself for easy transportation and includes a Water bottle, Cooking cup, Cooker, Pouch, Cup lid and Flint & Striker. Made from high quality materials, this cooking system is lightweight, compact and robust.

## DRAGON COOKING SYSTEM INCLUDES:

### 1: Water Bottle

The black plastic 950ml (32oz) capacity bottle is made from heavy duty material and includes a screw top closure. Designed for the British army, this bottle is strong and robust.

### 2: Cooking Cup

The Cup doubles as a cooking pot and features a special heat receptor on it's base.

### 3: Multi-fuel Cooker

A robust, fuel efficient multi-fuel cooker. In transit, the cooker nests neatly and compactly beneath the cup.

### 4: Pouch

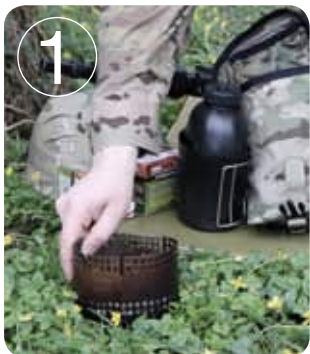
The pouch is the perfect accessory for the BCB Cooking Systems. Features include belt loops for easy transportation and a padded compartment to protect the cup lid.

### • Cup Lid

The cup lid helps keep dust and dirt out of foodstuffs and keeps the cup insulated.

### • Fireball Flint & Striker

The original BCB fire starter just got better. The new design is comfortable to hold and safe to use. It will strike thousands of times and features a compass in the handle.



## Using the Cooker

1. Place cooker on a sure and flat surface in a safe place
2. Open fuel as needed and place into the fuel tray of the cooker
3. Ignite with a flint, match or lighter
4. Take care as flame may not be visible in sunlight
5. Carefully fold down the cookers handle over the flame
6. Place Cooking Cup on top of cooker over the flame



## DRAGON COOKING SYSTEM

This high grade stainless steel cup and hard anodised aluminium cooker system fits neatly around the 950ml (32oz) Canteen Bottle, and then neatly away into a pouch. It is shaped to fit around your body. Quick and easy to use with any solid, gel or liquid fuel.

- Lightweight
- Quick cooking time
- The Boil time of 500ml of water with an MRE retort ration is an incredible 5.5 minutes when using the fantastic Fire Dragon fuel.
- The cooker and cup are hard anodised, giving it an easy to clean finished.
- Compact
- Robust
- Multi-fuel
- The Pouch can be MOLLE mounted onto belts, rucksacks or body armour.
- The Cup is also available seperately in either black hard anodised or the natural silver colour (see page 20)

### FULL SET 6 PIECE

CODE: CN014

- |                         |                          |
|-------------------------|--------------------------|
| 1. Pouch (black or MTP) | 4. Cup - Stainless Steel |
| 2. Flint & Steel        | 5. Canteen               |
| 3. Cooker - Alluminium  | 6. Lid                   |

Weight: 838g (29.5oz)

### PART SET 4 PIECE

CODE: CN015

- |                          |            |
|--------------------------|------------|
| 1. Cooker - Alluminium   | 3. Canteen |
| 2. Cup - Stainless Steel | 4. Lid     |

Weight: 626g (22oz)





GSA

**BCB CUP CANTEEN****CODE: CN540 SILVER (NATO ISSUE)****CODE: CN540B BLACK**

Constructed of high-grade stainless steel. The cup canteen is designed to fit beneath the water bottle as part of the BCB Complete Cooking System.

- Doubles as a cooking pot.
- Available with a black PTFE coating which means it's easier to clean.

**Volume:** 750 ml (internal measuring scale) (1.58 pints)

**Size:** 13.7 x 10.2 x 10cm (5.3" x 4" x 4")

**Weight:** 290g (9.6oz)

**NATO approved:** NSN-6850-99-798-5980  
8465-99-721-3131



GSA

**WATER BOTTLE & MUG****CODE: CR244A (STANDARD)****CODE: CR244B (NATO ISSUE)**

A black plastic 950ml (32 oz) capacity bottle and 500 ml (1 pint) capacity mug.

- Issue (58 pattern) size
- Heavy duty material
- Plastic cup with handle
- Screw top closure
- British army style

**Dry weight:** 227g (8oz)

**NATO approved:** NSN- 8465-99-9736665

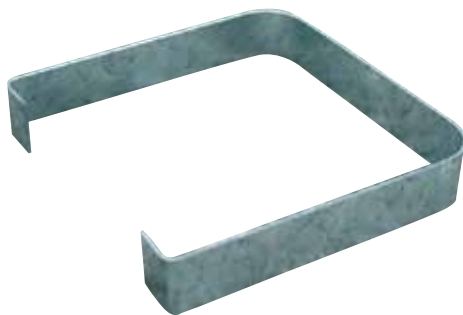


GSA

**BCB CUP LID****CODE: CN009**

A plastic lid for the classic Cup Canteen shown above.

- Helps keep dust dirt out of foodstuffs. Converts the cup into an insulated mug.
- Helps to reduce spillage when walking or sitting in vehicles.

**BCB CUP HOLDER****CODE: CP008**

Simple but effective. The BCB Cup holder allows the boiling of water and cooking of food directly over a camp fire.

- Just clip to the lip of the BCB Cup.



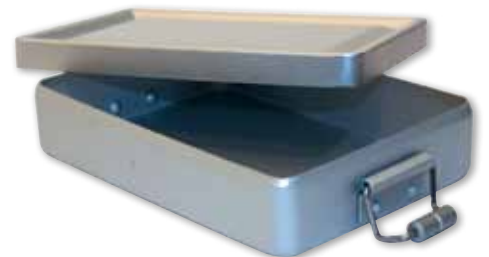
GSA

**MESS TIN****CODE: CN246**

These stacking tins are standard pattern aluminum, with foldout handles.

**Size:** 18 x 13.5 x 6cm

**Weight:** 480g (21oz)



GSA

**MINI MESS BOX****CODE: CN550**

A super lightweight, airtight aluminum tin with locking roller clasps.

It features a rubber seal within the lid, and is useful as a storage tin for personal survival equipment.

**Size:** 13 x 9.5 x 3cm (5" x 3.5" x 1")

**Weight:** 95g (4oz)

## OUTDOOR COOKING SET

CODE: CN020

The 9-piece outdoor cooking set contains:

- Folding Cooker
- Fuel Receiver
- FireDragon Gel Fuel 250 ml
- Steridex hand sanitizer
- Can opener
- Mess tin x 2
- Fireball Flint & Striker
- Lightweight Knife, Fork & Spoon set



## BUSHCRAFT COOKER

CODE: CN339

A compact and lightweight folding cooker. Includes 3 x FireDragon cooking fuel blocks with Flint & striker.

- Compact and lightweight
- Durable
- Set contains:
  - Folding Cooker
  - 3 x Cooking fuel blocks (3 x 27g / 1oz)
  - Fuel tray
  - Flint & Striker

Size:: 11.4 x 8.4 x 2.6cm (4.5 x 3.3 x 1")

Weight (Cooker): 124g (4.3oz)

+ contents: 240g (8.4oz)



# FIRE DRAGON

## GREEN & CLEAN COOKING BIOFUEL



### Fire Dragon beats:

- ✓ **Hexamine** - Gives off Cyanide
- ✓ **Trioxane** - Gives off Formaldehyde
- ✓ **Gas fuels** - Unable to be transported by air

### FIREDRAGON GREEN & CLEAN GEL FUEL

CODE: CN336D (1 LITRE)

CODE: CN336C (250ML)

Introducing our new all-weather gel biofuel derived from FireDragon Solid fuel technology. Made from UK sourced ethanol, FireDragon Gel Fuel can be used in multi-fuel outdoor cooking stoves, and barbecues, as well as indoor ethanol fireplaces.

We formulated and developed the FireDragon gel to help people who venture in the great outdoors cook their rations and boil their brews quickly, safeguard their health, while protecting the environment. Our fuel is non-toxic, non-drip and made from 100% natural ingredients including ethanol sourced from UK grown grain stocks. It is easy to light, burns cleanly and our research shows that it boils quicker than meths.

FireDragon Gel fuel is an ideal companion for all outdoor pursuits. Whether in driving rain, the freezing arctic or searing heat, the fuel will perform in extreme conditions.

- **Easy to Light** - Extremely easy to light with a flint & striker, lighter or matches.
- **Quick Boil** - Boils quicker than meths.
- **Non-Drip** - The non-flowing gel and bottleneck widge prevent leakage.
- **Clean Burn** - The gel produces very little soot.
- **All Weather** - FireDragon gel is waterproof and will burn even when wet. The ultimate all weather gel fuel.
- **Non-Toxic** - Gives off an odourless clean burn.
- **Environmentally Friendly** - *Made from 100% natural ingredients, FireDragon is kind to the planet.*
- FireDragon Gel is supplied in two sizes: 250 ml and 1 Litre.



**FIREDRAGON GREEN & CLEAN SOLID FUEL**

**CODE: CN336B (CASE 50 QTY X (6 X 27G))**



Fire Dragon is a new innovative environmentally friendly solid fuel.

- Non-toxic and odourless when burnt
- Easy and quick to ignite - use the flint, match or lighter.
- Low luminosity
- Very little soot given off, so doesn't dirty your cooking pot or mess tin.
- Easy to store and handle
- Safe to be packed with food
- High calorific value 28,000 kJ / kg
- Suitable for all weather conditions
- Each block will burn for about 8 minutes. Two blocks for about 12 minutes
- Will light & burn even when wet
- Can be used with a variety of cookers
- Made from sustainable, natural biofuel
- Air transportable
- Patented



**Weight:** 6 X 27g (0.9oz)  
**NATO approved:** NSN-9110-99-505-2835

**START** Quick, simple & easy to ignite



**3 MINUTES** Starting to boil. Little flame visible



**5 MINUTES** Rolling boil. No smell

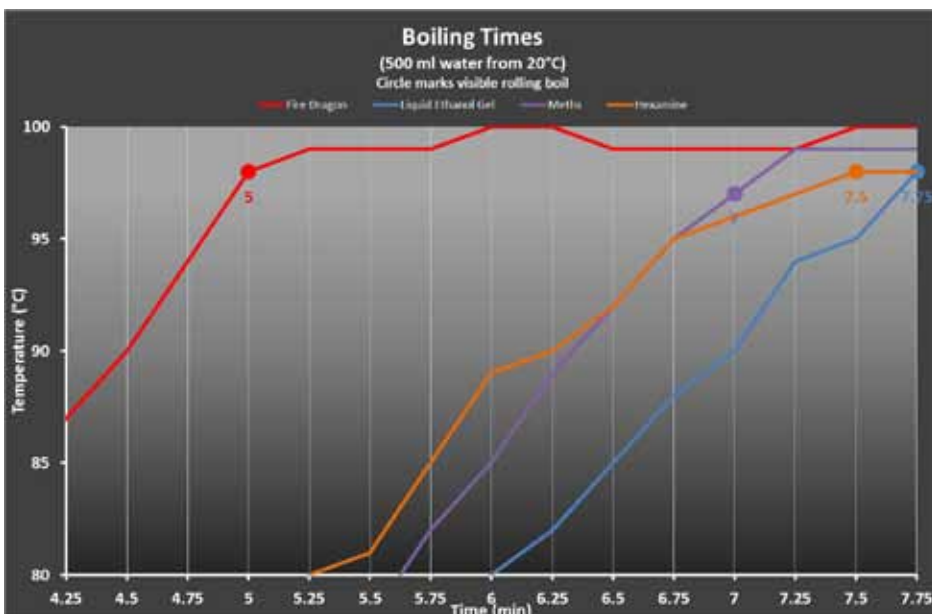


All times are approximate

**Comparison table - Better than the rest!**

	Hexamine	Trioxane	Butane Gas	Fire Dragon
Non-Toxic	x	x	✓	✓
Renewably Sourced	x	x	x	✓
Suitable for extreme conditions (wind and rain)	x	✓	✓	✓
Burn whilst wet	x	x	✓	✓
Easy to ignite	x	x	✓	✓
Odourless	x	x	✓	✓
No soot	x	x	x	✓
Safe for wildlife	x	x	✓	✓
Low luminosity flame	x	x	✓	✓
Air transportable	✓	✓	x	✓
Made in UK	x	x	✓	✓

**Performance table - Quicker than the rest!**





### THERMAL FLASK

**CODE: CR083 SILVER**

**CODE: CR083B BLACK**

- Stainless flask 0.4 Litres
- Comes with screw top
- Integrated pressure relief valve
- Keeps drinks hot for 6 hours or Cold for 10 hours

**NATO approved:** NSN-7350-99-449-0184



### JERRY CAN COLLAPSIBLE (WATER)

**CODE: CT026**

A handy camping companion, this water carrier folds up small enough to fit into a glove box and expands to hold 10 litres (21 pints).

- Robust
- Carrying handle
- Integral tap

**Size:** 20 x 25 x 6cm (7.8 x 9.8 x 2.4") when compressed, 30 x 20 x 25cm (11.8 x 7.8 x 9.8") when expanded



### WATER PURIFYING TABLETS

**CODE: CR210**

Substantially reduces contamination in filtered water chlorine-based tablets. Neutralises bacteria and helps to protect you against water transmitted ailments.

- 1 x tablet treats 1 litre
- 2 x 50 tablets (foil wrapped)
- NATO approved



### JERRY CAN POLYMER (WATER)

**CODE: CT019**

A high-density plastic water carrier, with two different pouring holes. The smaller hole doubles as a breather for steady flow of water.

- NATO approved

**Dry weight:** 2.2kg (4.8lbs)

**Capacity:** 20L (42.2 pints)

**Size:** 45 x 34 x 16cm (19 x 14 x 6")





**PERSONAL WATER FILTER**

**CODE: CR254**

Turns rain, lake and river water into drinkable water immediately.

- Filters out particles down to 0.1µ — that’s half the size of other commercially available filters. This means that you get potable water that’s crystal clear and perfect for drinking.
- Entirely removes suspended contaminants of alga, worm and dust
- Entirely removes bacteria in water - 99.9999%
- Escherichia coli, Staphylococcus aureus, Salmonella typhi, Vibrio cholerae, Legionella pneumophila
- Highly efficiently removes soluble heavy metal ions in water such as Pb2+, Cd2+, Cr6+, As3+ etc
- Reduces unpleasant tastes and odors

**Size:** 26.5 x 7.3cm dia (10.5” x 2.9” dia)

**Weight:** 230g (8oz)

**Cartridge Capacity:** 1320 gallons (52000 l)

**Includes:** Pump housing, reusable / replaceable filter cartridge, pump, outlet hose, instructions.

**RE-USABLE DRINKING POUCH (PACK OF 2)**

**CODE: CR400**

- Flexible - fold flat when empty
- Gusseted so will stand up
- Re- use it again and again, Ideal to store extra water
- With Karabiner hanging clip
- Fits to Universal Tap Adaptor

**Capacity:** 400ml each



**MAGNETIC CLIP**

**CODE: CR805**

A smart and simple magnetic tube holder clip, easily attachable to shirt, shoulder strap or Molle strap, allowing complete ease of use.

- Strong magnetic system
- Universal Magnetic Clip
- Easily Attach / Detach



**PLASTIC MUG**

**CODE: CN245**

Light weight green plastic mug. Half litre capacity.



GSA

**STAINLESS INSULATED MUG**

**CODE: CR045**

A robust stainless double skinned mug, with lockable drinking spout.

- Screw on lid
- Sealable drinking spout
- Excellent for a beverage on the move
- NATO approved: NSN-7350-99-679-8140

**Capacity:** 400ml (0.75pints)

# AQUASOURCE WATER TANKER 20 LITRE

CODE: CR812 (AQUASOURCE)

CODE: CR813 (OPTIONAL EXTRA FRAME)

AquaSource is a durable, collapsible, backpackable hydration alternative to traditional water cans. Source's Glass-like™ reservoir technology delivers pure water taste with drastically reduced maintenance plus improved access for cleaning and ice insertion.

## Pack Features:

### 1 Multiple Carrying Handles

Top mounted carrying handles for one or two person portability.

### 2 External fill port with integral refill handle

Delivers fast and easy refills on-the move with no spills.

### 3 Tube Storage Pockets

Dual pockets secure and protect tubes during transport.

### 4 Quick Attachment System

Includes four sturdy adjustable straps for hanging or anchoring AquaSource within a vehicle.

### 5 Adjustable Shoulder Straps

Pivoting contoured shoulder straps adjust to fit a wide range of body types.

### 6 DEI 1606 | DEI 1603 MOLLE

#### Frame Compatible

Connects to the MOLLE frame using specially designed attachment straps 7 Easily adjusts to maintain stability with changes in water volume



## Hydration Features:

### TASTE-FREE™ System

Co-extruded PE film retains pure liquid taste with no plastic flavor. BPA and phthalate free.

### Grunge-Guard™ Technology

Inhibits bacteria growth on reservoir and drinking tube surfaces for the life of the system. Technology utilized FDA-approved and EPA-registered anti-microbial agent.

### Easy Care & Low Maintenance

For use with water, clean by simply rinsing the system and hanging it opened until dry. For use with energy drinks or sweetened liquids, follow the cleaning instructions in the attached care and maintenance booklet.

### 9 Widepac™ Wide Opening Access

Patented slide closure for easy draining and cleaning. Airtight seal. Usable as an air drainage hole when filling in water.

### 10 UTA™ Tube Refill Adaptor

UTA (Universal Tube Adaptor) instantly connects AquaSource to a wide range of spigots and taps to allow spill free refills right through the dispensing tube.

### 11 Multipurpose Tubes with tap and QMT™

Two tubes dispense water simultaneously to speed refills. First tube is set up for open flow, second tube connects directly with Source QMT quick-connectors.

### 12 VHS (Vehicle Hub Station)

#### Compatible

AquaSource's QMTM quick-connector pairs with Source's VHS (Vehicle Hub Station) to supply water to up to 6 passengers in a vehicle. Allows mounted passengers to ride without cumbersome back-mounted hydration while conserving their personal system for use upon arrival.

NEW

NEW



Exterior	Tough abrasion resistant 1000D Nylon
Cargo Capacity	N/A
Insulation	5 mm closed cell PE
Liner	100D/420D Nylon
Straps	Heavy Duty PP
Buckles	Super tough Nylon

Liquid Capacity	20L / 676 oz
Weight (pack + reservoir)	1.47kg / 3.24Lbs
Hydration System	WXP
Reservoir	435 micron co-extruded Glass-Like™ PE
Tube	Weave Covered, 94 cm / 37 inch long

Length	23.6" / 60 cm
Width	16.1" / 41 cm
Max. Depth	7.0" / 18 cm

**UV MOBILE WATER PURIFIER [MWP]**

**CODE: CR256**

**SAFE DRINKING WATER DIRECTLY FROM SOURCE**

This mobile water purification unit enables filtration and disinfection of dirty water at its source. It is equipped with an innovative system of triple filters and an Ultra Violet disinfecting light to produce potable water from any dirty fresh water source.

The durable construction of the unit is critical when considering the operating environment. The unit can be used in the harshest conditions and will withstand the rigours of insensitive operation. All connections are industry standard plumbing push fit mechanisms which enable simple setup and operation.

It is a rugged unit housed in a MIL-STD-810F, rotomoulded case and has been designed for easy transport and minimal footprint occupation in a Disaster Relief vehicle. The NATO stock number of the housing means it can be incorporated quickly and easily into military logistical processes for transportation.

The integrated power cell will ensure continuous pump and UV lamp operation to deliver as much as 2000 litres of potable water. The re-charge system can be from a number of options including 12/24v DC in-vehicle sockets to 240/110v AC mains electricity. An optional solar charging solution is available.

It's greatest strength is in its ease of operation. Almost no training is required as only two pipe connections are required and the filter replacement method has been designed to be as simple as possible. This allows it to be used in areas of low expertise and no supervision is required.

- High water production rates
  - Tough/durable/simple
  - Minimal size and weight
  - Self-powered
  - International distributors for customer support
  - Certified water quality
  - NATO Stock Number
  - 7 litres of potable water per minute\*
  - 2000 litres of water per charge\*
  - MIL-STD-801F Rotomoulded Case
  - Easy to use - minimal training required
  - Easy change filters
  - Multiple charging options
  - Water quality independently tested
- \* Dependent on water turbidity*

**Width:** 600 (23.6") x **Depth:** 450 (17.7") x **Height:** 400 mm (15.7")  
**Dry weight:** 32.3 kg (71.2 lbs)  
**Wet weight:** 38.0 kg (83.7 lbs)  
**Suction lift:** 3000 mm (118")



**LARGE WATER TREATMENT UNITS**



**HYDRO 100**

**CODE: CR257**

The Hydro 100 is an electrochemical water treatment unit specifically designed for low volume high quality water treatment. The unit is suited to treating river, stream, borehole, and sea water removing contaminants for pre-filtration or reverse osmosis for use as drinking water. It contains an electrode, a power supply, tank, pump and various pipework.

**Flow Rate:** Max 10m<sup>3</sup>/hr  
**Electrodes:** 1  
**Pipework (inlet and outlet):** 1"  
**Drive:** 6Kva



**HYDRO 200**

**CODE: CR258**

The Hydro 200 is an electrochemical water treatment unit specifically designed for medium flow rate high quality water treatment. The unit is suited to treating a wide range of contaminants including low level polluted borehole and river waters to highly polluted industrial wastewater. It contains electrodes, a power supply, tank, pump and various pipework.

**Flow Rate:** Max 20m<sup>3</sup>/hr  
**Electrodes:** 2  
**Pipework (inlet and outlet):** 1"  
**Drive:** 70A 4 quad



**HYDRO 400**

**CODE: CR259**

The Hydro 400 is an electrochemical water treatment unit specifically designed for high flow rate high quality water treatment. The unit is suited to treating a wide range of contaminants including mining, shipboard, environmental and industrial wastewater. It contains electrodes, a power supply, tank, pump and various pipework.

**Flow Rate:** Max 40m<sup>3</sup>/hr  
**Electrodes:** 4  
**Pipework (inlet and outlet):** 4"  
**Drive:** 70A 4 quad

## RAPID WATER FILTERS (RWF)

### A GAME CHANGER IN PERSONAL PORTABLE WATER FILTRATION!

The Rapid Water Filters use a special chemical treatment on the filter fabric labyrinth which causes all the viruses, bacteria and small protozoa to attach to it. This is called electro adhesion.

Electropositive fibrous media has high particle removal efficiency as well as 50 to 250 times greater dirt holding capacity than the competitors. The filters are also infused with silver. Silver infusion is a self-sanitizing agent that kills bacteria, preventing growth of captured bacteria.

- **Virus filtration is 99.9999% effective. This is well in excess of the USA EPA standards which is for only 99.99% removal.**
- **For Bacteria we again filter 99.9999%. This is the same as the EPA requirement.**
- **For protozoa the figure is 99.998%, which again exceeds the EPA requirement of 99.9%.**
- **Rapid flow rate at low pressure**

The filters work at a minimum effective flow rate of 2 psig (13.8 kPa) or 1.37 m (4.5') of water pressure. This is very easily achieved just by hanging the bag from a branch. Other leading gravity capable filters quote their throughput figures as 20 psig (138 kPa), which is equivalent to 13.7 m or 45' of water. That is high pressure - about 5 stories high.

### EFFECTIVE

The Rapid Water Filter exceeds EPA recommendations for reduction rates, and is capable of retaining 99.9999% of micro-organisms\* (such as viruses, bacteria & protozoa which can include Cryptosporidium, Giardia Intestinalis, Legionella, Pseudomonas, Salmonella, E-coli, Mycobacteria, Aspergillus) and endotoxins – all at flow rates hundreds of times greater than virus-rated ultraporous filters. **THESE ARE THE HIGHEST FILTRATION RATES AVAILABLE.**

### FAST

The Rapid Water Filter can filter 4 liters of water in just 3 minutes!

### LONG LIFE

Our filters can last for years with 20 times the dirt holding capacity of microglass UF filters!\*

### EASY

Fill water bag with dirty water and hang. Open water valve and clean water flows to your hydration pack.

### CONVENIENT & LIGHT WEIGHT

The Rapid Water Filter is small and easily folds up into a compact, lightweight bundle and is easily stored in the mesh bag provided.

### IDEAL FOR:

- **Emergencies**
  - Tornadoes
  - Hurricanes
  - Earthquakes
  - Floods
- **Adventure Touring**
- **Backpacking**
- **Camping and Hunting**
- **Home/Cabin**
- **Water Bottles**
- **Hydration Packs**
- **International Traveler**
- **Marine and RV Potable Water Storage Tanks**
- **Military Personnel**
- **Missionary Worker**



## SCOUT HYDRATION SYSTEM

**CODE: CR405 1.2L HYDRATION SYSTEM**

**CODE: CR405A 1.6L HYDRATION SYSTEM**

**CODE: CR405B 1.9L HYDRATION SYSTEM**

For use with Hydration Packs

- Ideal for hikers, emergencies, Hunters, Distaster zones.
- Optional additional extensions for even faster filtration and added capacity.
- 1.2L, 1.6L or 1.9L per minute flow rate

- **Up to 11,200 Gallon capacity (1.9L System)\***
- **At just 2 psig, reduces:**  
**Bacteria at 99.9999%**  
**Viruses at at 99.9999%**  
**Cysts at at 99.9998%**

\*The level of turbidity in the water influences filter life.

## SCOUT REPLACEMENT FILTERS

**CODE: CR404 SCOUT 1.2L HYDRATION FILTER**

**CODE: CR404A SCOUT 1.6L HYDRATION FILTER**

**CODE: CR404B SCOUT 1.9L HYDRATION FILTER**



**EXPLORER CAMP HYDRATION SYSTEM**

**CODE: CR402** EXPLORER CAMP 2.2L SYSTEM

**CODE: CR402A** EXPLORER CAMP 3.4L SYSTEM

**CODE: CR403** EXPLORER CAMP 4.1L SYSTEM

The Rapid Water Filter housing/filter Extensions allow you to tailor your water filter system for a specific trip or activity.

Rapid Water Filter Extensions allow you to increase flow rates:

**A)** Standard size **6.35cm (2.5")** delivers flow of 2.2L/minute and weighs **141.7g (5 oz)**.

**B)** One Extension **11.43cm (4.5")** delivers flow of 3.4L/minute and weighs **226.8g (8 oz)**.

**C)** Two Extensions **16.51cm (6.5")** deliver flow of 4.1L/minute and weighs **283.5g (10 oz)**.

*(product weights do not include optional 226.8g (8 oz) water bag)*

**System contains:**

- Water bag
- Tubes
- Water Filter



**EXPLORER CAMP CASES**

**CODE: CR408A** EXPLORER 2.2L HOUSING

**CODE: CR408B** EXPLORER 3.4L HOUSING

**CODE: CR408C** EXPLORER 4.1L HOUSING

**EXPLORER REPLACEMENT FILTERS**

**CODE: CR406** EXPLORER 2.2L FILTER

**CODE: CR407** EXPLORER 3.4L FILTER

**CODE: CR407A** EXPLORER 4.1L FILTER

**PIONEER 1.2 LITRE STRAW**

**CODE: CR401**

- Filter is interchangeable with Scout for hydration packs.
- Simply drop the filter into the water source and drink through the straw
- Double O-Ring replacement filter element.
- Very small, extremely lightweight (1.9oz.), easy to use.
- 1.2 Litre flow rate
- Includes small carry bag, filter and straw.

**HAUL 27 LITRES****Hydration Daysack with 3 Litre Water Reservoir****• Main Compartment**

16 Litres capacity. The main zip extends down to each side to give easy access

**• Top Front Pocket**

5 Litre pocket features a smaller mesh pocket with access from the outside or inside

**• Lower Front Pocket**

3 Litre pocket. Zip opening extend the width of the pack for ease of access

**• Fabrics**

500 Denier polyamide fabric

Available in: Coyote/Black

Spacer fabric used on back face and under side of the shoulder strap to encourage airflow and reduce localised skin wettedness and increase comfort

**• Comfortable Shoulder Strap**

Strong flexible attachment points. This allows the straps to fit the back, especially if you have

narrow or broad shoulders, are wearing body armour or bulky clothing.

**• Back Face**

Raised closed cell foam padding raises the load from the back to further encourage airflow and reduce wettedness

**• External Bladder Pocket**

Side bladder opening extends the length of the pack to allow ease of refilling, interchanging the bladder

**• Source bladder**

- Taste-free
- Glass-like film technology stops dirt and bacteria from sticking to the plastic
- Easy fill & cleaning
- Quick Mate Technology for quick disconnection of the tube
- Low, baffled profile

- Angled Storm Valve for ease of drinking, including shut off twist mechanism
- Dirt Shield

**• Additional features:**

- 2x Radio Antenna openings
- Grab handle
- 20mm Compression straps
- Sternum strap with chest expansion elastic
- 3x lower hydration tube openings
- MOLLE interface
- Velcro ID patch

**Capacity:** 27 Litres

**Cargo capacity:** 24 Litres

**Source bladder:** 3 Litres

**weight:** 1.3kg (2.8 lbs)

**Overall dimensions:**

Main pocket:

(h)44 x (d)13 x (w)30cm / (h)17.3 x (d)5.1 x (w)11.8"

Upper pocket:

(h)26 x (d)7 x (w)30cm / (h)10.2 x (d)2.7 x (w)11.8"

Lower pocket:

(h)14 x (d)7 x (w)30cm / (h)5.5 x (d)2.7 x (w)11.8"



Supplied  
& fitted  
with

**3 LITRE**  
**BAFFLED RESERVOIR**

# PAYLOAD 42 LITRES

## Daysack with 3 Litre Water Reservoir

“THE PACK IS EXCELLENT. I LOADED IT UP AND TOOK IT OUT FOR A STOMP OVER THE WEEKEND AND IT CARRIES WELL”

- Bill Thomas, Raider Magazine



• **Main Compartment**

30 Litres capacity. The main zip extends down to each side to give easy access

• **Top Front Pocket**

6 Litre pocket features a smaller pleated pocket for documents

• **Lower Front Pocket**

3 Litre pocket. Zip opening extend the width of the pack for ease of access

• **Fabrics**

500 Denier polyamide fabric  
Available in: Coyote/Black  
Spacer fabric used on back face and under side of the shoulder strap to encourage airflow and reduce localised skin wettedness and increase comfort

• **Comfortable Shoulder Strap**

Strong flexible attachment points. This allows the straps to fit the back, especially if you have

narrow or broad shoulders, are wearing body armour or bulky clothing.

• **Back Face**

Raised closed cell foam padding raises the load from the back to further encourage airflow and reduce wettedness

• **External Bladder Pocket**

Top bladder opening allows easy access to the bladder for refilling & cleaning. The pocket can be collapsed for access to the full capacity of the pack when not using the hydration. Double zip opening allows the bladder tube to emerge centrally, or either side of the pack

• **Harness**

Vertical back frame drops some of the load to the musculoskeletal frame via the removable hip belt and pelvic girdle

• **Source bladder**

- Taste-free

- Glass-like film technology stops dirt and bacteria from sticking to the plastic
- Easy fill & cleaning
- Quick Mate Technology for quick disconnection of the tube
- Low, baffled profile
- Angled Storm Valve for ease of drinking, including shut off twist mechanism
- Dirt Shield

**Capacity:** 42 Litres  
**Cargo capacity:** 39 Litres  
**Source bladder:** 3 Litres  
**Weight:** 2kg (4.4 lbs)

**Overall dimensions:**

Main pocket:  
(h)45 x (d)20 x (w)34cm / (h)17.7 x (d)7.8 x (w)13.3”  
Upper pocket:  
(h)31cm x (d)8cm x (w)34cm / (h)12.2 x (d)3.1 x (w)13.3”  
Lower pocket:  
(h)13cm x (d)8cm x (w)34cm / (h)5.1 x (d)3.1 x (w)13.3”



Supplied & fitted with

3 LITRE  
BAFFLED RESERVOIR

**JETSTREAM**

- **Large** - 52mm opening with handle
- **Lining** - Closed cell foam lined pouch to help keep the contents cool or warm.
- **Shoulder straps** - Lightweight shoulder straps are removable so the system can be attached to the larger packs, yokes and makes it easier to fit into your rucksack.
- **Fabrics** - Polyamide fabric available in Coyote/Black.
- **Attachments** - 6 'D' rings and 4 side release buckles, to attach to the outside of BCB's Payload daysack.
- **Access opening** - Easy access double zip extends down the pack and provides opening for the drinking tube over the shoulders or under the arm.
- **Capacity** - Source reservoir: 3 Litres
- **Weight** - 640g (22.5oz)



CR802B (Black) CR802C (Coyote)



Supplied & fitted with

**WXP HYDRATION SYSTEM**

**CODE: CR804**

- Exclusive 4 layer coextruded Polyethylene construction with taste free, maintenance-free Glass Like liner
- Integrated Grunge-Guard antimicrobial
- Patented leakproof slide wide opening for easy cleaning, draining, ice insertion
- Easy opening filler port fits most pump style water filters
- Weave covered tube
- Self sealing SQC quick disconnect hose is detachable from filled reservoirs with no leakage, offers click-in compatibility with USMC Miox Filter system
- Patented valve design
- Integrated valve shut-off
- Dirt Shield valve cover

**Capacity** 3 Litres



**BAFFLED RESERVOIR**  
(FOR PAYLOAD AND HAUL SYSTEMS)

**CODE: CR803**

Helps to reduce the sloshing around of the water when you are on the move. Also stops the large bulge at the bottom of the reservoir when more than half full.

- Cool Weave insulating cover tube
- Angled valve - Easier to drink than from a straight valve
- **Capacity:** 3 Litres
- Helix-Valve™ Bite valve delivers full flow with a soft bite and will not drip even under pressure or prolong use.
- Angled Valve Turned 360 degrees for perfect valve/mouth orientation. Allows tube to be 25cm shorter. Less excess tube bouncing around the chest!
- Dirt-Shield™ Protective Cover keeps the drinking valve free of dirt and protected.
- Cool Weave Cover Tube Insulates and blocks UV-light. Water stays cool and Inhibits bacteria growth from first to last sip.
- Widepac™ Wide Opening Access Patented slide closure for easy draining and cleaning. Airtight seal.
- TASTE-FREE™ System Co-extruded PE film retains pure liquid taste with no plastic flavor. BPA and phthalate free.
- Grunge-Guard™ Technology Inhibits bacteria growth on reservoir and drinking tube surfaces for the life of the system. Technology utilized FDA-approved and EPA registered anti-microbial agent.



Supplied in



**PAYLOAD** (p.28)



**HAUL** (p.29)

**AND**



**CLEANING KIT**

**CODE: CR810**

Reservoir cleaning kit with tube cleaning brush and instructions.

**Tube Brush Kit**

The perfect accessory for cleaning your tube of any residue, such as energy drinks.

**Brush length:** 102.5cm (40.4")

**Brush weight:** 6g (0.2oz)

**Brush material:** Stainless steel spring handle with nylon fiber

**Packaged Size:** 0.2 x 2.2 x 2.6cm (0.06 x 0.9 x 1.06")

**Packaged weight:** 0.0001 lbs



**UTA™ UNIVERSAL TAP ADAPTOR**

**CODE: CR806**

A creative solution for refilling your hydration system on the move. The reservoir is filled directly through the tube eliminating the need to remove the hydration pack from the back for refill.

- Fits a variety of water bottles
- Designed to fit a wide range of indoor and outdoor taps.
- QMT™ - "Quick connect" allows instant, "one click" connection to the tube



**HELIX VALVE™**

**CODE: CR811**

Helix Valve features a rounded shape that requires no special mouth orientation. A retreat spring mechanism delivers full flow with a soft bite and will not drip even under pressure or prolong use. Built-in "bio-net" style shutoff mechanism prevents accidental leaks during transport.

- Retreat spring shutoff mechanism
- Tube tip QMT
- Dirt-Shield™
- High flow rate - Easy to drink from

## PILLOW TANKS - POTABLE WATER

CODE: CA972

Pillow tanks are the simplest and most effective flexible tank for the temporary storage of water.

Our potable water tanks are manufactured from 1100 gms high quality PVC to the UNICEF specification. As well as being totally enclosed, keeping the potable water free from contamination, the material incorporates a layer of black to eliminate all light penetration and therefore prevent algae growth.

The tanks are designed to sit on the ground and are self supporting.

Our standard sizes are:

<b>1,500 Ltr</b>	<b>12,000 Ltr</b>
<b>2,000 Ltr</b>	<b>15,000 Ltr</b>
<b>3,000 Ltr</b>	<b>20,000 Ltr</b>
<b>3,500 Ltr</b>	<b>30,000 Ltr</b>
<b>5,000 Ltr</b>	<b>40,000 Ltr</b>
<b>6,000 Ltr</b>	<b>50,000 Ltr</b>
<b>10,000 Ltr</b>	

Our normal specification includes 2 x 2" M.BSP outlets, pressure relief valve and repair kit. Extras - 2.1/2", 3" or 4" inlet/outlet, valves or groundsheet.

We can customise a tank to any size and supply with any required fittings

We also manufacture potable water tanks from polyurethane. These are generally used in harsher environments and are more expensive.



## PILLOW TANKS - NON POTABLE WATER

CODE: CA972A

Our non potable tanks are made to the same designs and sizes as our potable water tanks but they are made using a standard PVC coating.

Non potable tanks are used to hold waste or grey water. In industry they are used to hold water from processing or as reservoirs. They are also used in the building industry as a reservoir for fire fighting.

Our standard sizes are:

<b>1,500 Ltr</b>	<b>12,000 Ltr</b>
<b>2,000 Ltr</b>	<b>15,000 Ltr</b>
<b>3,000 Ltr</b>	<b>20,000 Ltr</b>
<b>3,500 Ltr</b>	<b>30,000 Ltr</b>
<b>5,000 Ltr</b>	<b>40,000 Ltr</b>
<b>6,000 Ltr</b>	<b>50,000 Ltr</b>
<b>10,000 Ltr</b>	

Our normal specification includes 2 x 2" M.BSP outlets, pressure relief valve and repair kit. Extras - 2.1/2", 3" or 4" inlet/outlet, valves or groundsheet.

We can customise a tank to any size and supply with any required fittings

We also manufacture potable water tanks from polyurethane. These are generally used in harsher environments and are more expensive.

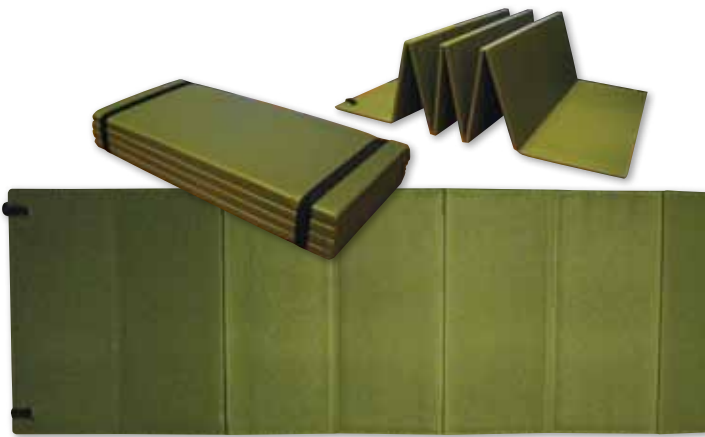


## WATER TANKERS

Water tankers are designed for use as temporary or emergency articulated lorry based tanks or bowsers with a capacity of up to 30,000 litres.

Their main function is to solve a short term requirement and therefore we will tailor the water tanker and associated systems to your requirement on a rental basis.

For rapid response we will hold tanks to meet your specific requirements under contract.



GSA

### FOLDING SLEEPING MAT

CODE: CT650B

This new foldable sleeping mat fits inside your rucksack

- It combines durability and non absorbent qualities as well as insulation and compression resistant.
- Can be used as a sit mat when folded
- It can be used fully unfolded or in a number of combinations
- Material complies with UK standard

**Size fully open:** 52 x 180 x 0.8cm (20.5 x 70.9 x 0.3")

**Size Folded:** 52 x 6 x 23cm (20.5 x 2.4 x 9")

**Colour:** Olive Drab

**Density:** 50kg/m<sup>3</sup>

**Weight:** 370g (13oz)



### COLLAPSIBLE CAMP BED

CODE: CT009

Constructed from a lightweight aluminium frame and robust polyester canvas. Folds into a compact carry bag.

- Strong & robust
- Quick & easy to assemble

**Packed size:** 100 x 17 x 20cm (39 x 7 x 8")

**Weight:** 8.4kg (18.5lb)



### MINI HAMMOCK

CODE: CT430C

- Extremely strong 2.5cm (1") mesh
- Includes 2m (6ft) rope
- Lightweight

**Breaking strain:** 100kg

**Size (Open):** 213 x 121cm (83.85 x 47.6")

**Size (Packed):** 13 x 9.5cm (5.1 x 3.7")

**Weight:** 320g (11oz)



### UN SLEEPING BAG

CODE: CT027

This is the dark blue sleeping bag designed and approved for use by the UN staff. It comes with outer and inner water resistant nylon shell. Filled with cotton and poly-loft insulation.

- The outer material is fire resistant.
- The full length zip means the sleeping bag can be opened up and used as a blanket.
- Machine washable.
- Folded with velcro straps which are attached to keep it folded.
- Supplied with a nylon carry bag with a sling strap.

**Dimensions:** 190.5 x 83.8cm (75 x 33")

**Weight:** 1.7 kg (3.7lb)

**Approx packed size:** 30 x 21cm (11.8 x 8.3")

## ROLLABLE SOLAR CHARGER

10 WATT 15.4 VOLT

CODE: CE094

Durable, ultra-rollable and paper-thin, these amazing marine-grade Powerfilm panels can be fully rolled up. Perfect for applications where extreme flexibility is important, or where a very thin profile is needed. Powerfilm panels can be walked on and are suitable for adhering to a firm surface using a PVA glue. Integrated with a fabric backing for enhanced product functionality these panels perform well in diverse environments, including hot sun.

A perfect solar charger for small to medium electronics such as trickle charging 12V batteries, emergency radios or handheld electronics, the R15-600 Classic provides the ideal solution for everyday uses requiring smaller to midsize power needs

The R15-600 Classic Rollable Solar Charger produces 10 Watts of power at an operating voltage of 15.4 volts.

### FEATURES:

Built with the same standards as PowerFilm's full line of solar chargers, the R15-600 Rollable Solar Charger offers the following benefits:

- "Turns on" sooner and "turns off" later
- Resists point damage
- Provides versatility in a lightweight, compact, waterproof power source
- Lasts longer thanks to UV resistance
- Performs well in diverse conditions, including hot, cold, and cloudy environments
- Lightweight
- Durable -military tested
- Economical and easy to use
- Works in low light conditions
- No "sun soaking" required
- Ideal for every day use
- Power to charge the widest range of electronic devices

### SPECIFICATION:

- Solar Charger
- Rollable
- **Max. Output:** 10W
- **Volts:** AC/DC 15.4V
- **Amps:** .6
- **Colour:** White/Black
- **Material:** Vinyl/ETFE
- **Length:** 38 In, 972mm
- **Width:** 11.5 In, 292mm

For Use With Small Electronics (12v Battery Charging)

Includes 12v Female CLA Adapter and 15ft Cord



## PORTABLE SOLAR MAT CHARGING SYSTEM

CODE: CR255

Rugged portable solar mat charging system

- High output even in limited light
- Lightweight & foldable
- Field serviceable
- Flexible replaceable panels
- LED fault diagnosis



### MAT PHYSICAL PROPERTIES

	Deployed	Folded
Length:	1.53	0.4m
Width:	0.77m	0.4m
Area:	1.2m <sup>2</sup>	0.16m <sup>2</sup>
Weight:	2.5 kg	2.5 kg

Folded Height: 50mm  
 Colour: Olive, other colours available

### CELL PHYSICAL PROPERTIES

Length:	363 ± 5mm
Width:	351 ± 5mm
Weight:	0.24 kg

### ELECTRICAL PROPERTIES

Nominal Power:	8W
Voltage at Pmax:	17.2V
Current at Pmax:	0.458A
Open Circuit Voltage:	23.8V
Short Circuit Current:	0.52A
Power Tolerance:	± 10%
Electrical Tolerance:	± 10%
Power:	-0.5% / °C (±10%)
Vmp:	-0.51% / °C (±10%)
Imp:	+0.01% / °C (±10%)
Voc:	0.42% / °C (±10%)
Isc:	+0.03% / °C (±10%)



## RUGGED POWER BANK / BACK-UP CHARGER

CODE: ADV046A

A tough, rugged shockproof, dust-proof, and waterproof Power Bank. The rugged design protects the internal components and backup battery from various damage. Moreover, the Power Bank also features a 7800mAh backup battery to charge your multiple mobile devices, and integrated high-brilliance LED flashlight with dimmer and SOS function has been ready for various emergencies.

- Capacity: 7800mah
- Battery Type : Original Samsung 18650
- Input: DC5V-1000mA
- Output: DC5V-2000mA(MAX)
- Connector port: Micro cable,USB
- Charging time: Max. 6hrs
- Operating Temperature: -10°C to 50°C
- Colors: Black
- Certificates: CE/FCC, ROHS
- Battery life: ≥ 500 charge and discharge cycles times
- Suitable for: Nokia/ Samsung/HTC/PSP/Sony Ericsson/ Moto/ Camera
- Waterproof: IP67

Size: 80 x 75 x 18 mm (3.1 x 2.9 x 0.7")

Weight: 254g (8.9oz)



## Blast Boxers®

### BALLISTIC GROIN PROTECTION

These shorts offer protection against blast & fragments from IED's, and help guard against life changing injuries to the perineum and femoral arteries.



In designing the latest Blast Boxers, BCB's focus was to deliver a high quality product that pays attention to the small, but important things. The garment label for example is heat transferred to minimise weight, bulk and cause for any irritation. The seams are all flat locked to minimise bulk and eliminate any friction points. This is the kind of attention to detail that we believe is required to offer the best equipment we can.

- Compression design conforms to the body with stretchy side panels.
- Sculpted design Box brief styling with sculpted genital area, 4" fly opening and overlap of ballistic material at the fly opening.
- Greater protection - less weight at just 5oz.
- High fabric permeability - Breathable, just like wearing regular underwear.
- High wicking fabrics allow sweat to evaporate quickly with minimal drying time.
- Laboratory and field tested.
- Garment fully lined with the soft comfortable fabric to minimise chaffing.
- Flat locked seams for low bulk and low friction.
- Internal heat transfer care label.
- Antimicrobial fabric next to skin. Tested to AATCC 100 with 99% bacteria reduction after laundering in accordance to AATCC 135.
- DuPont™ Kevlar® performance maintained after 25 washes at 105oF.\*
- Berry Amendment and made in America Act compliant.
- Patented.
- The ballistic inserts are soft and highly flexible. They do not interfere with comfort during walking or running.
- Insert cover is welded to make them waterproof.
- Ballistic insert protection V50 17gr FSP = 1391.5 ft/s.
- Can also be supplied without the ballistic inserts.

### Men's PUG sizes



	Waist
<b>XS</b>	24-26
<b>S</b>	28-30
<b>M</b>	32-34
<b>L</b>	36-38
<b>XL</b>	40-42
<b>XXL</b>	44-46

### Ladies PUG sizes

	Waist
<b>XS</b>	22-24
<b>S</b>	25-27
<b>M</b>	28-30
<b>L</b>	31-33
<b>XL</b>	34-36
<b>XXL</b>	37-40



Boxer/brief styling with fly opening

Removable ballistic inserts to increase protection

**BLAST BOXER™ MK II**  
WITH REMOVABLE BALLISTIC INSERTS

CODE: CB489

These shorts offer protection against fragments during blasts from IED's, and help guard against life changing injuries such as perineal and femoral artery injuries.

- Patented
- Light weight mesh to keep wearer cool
- Boxer/brief styling with fly opening with 7.5cm (3") overlap
- Flame retardant materials throughout
- Helps protect blast and fragmentation injuries to the groin
- Removable ballistic inserts to increase protection - Add the inserts when the threat level is increased

- No ballistic degradation following washing
- Can be worn with the Tier 2 (previous page) for added protection
- High air permeability and moisture evaporation or transfer
- Lightweight: 170 grams (6 oz) - medium plus inserts
- Anti-microbial with over 95% bacteria reduction after 25 washes
- Quick drying

- Fully Berry compliant if required

	Blast Boxers	Silk Underwear
Weight (medium)	167g (5.9oz)	300g (10.6oz)



**BLAST BOXER™ MK III**  
THE ORIGINAL PROTECTIVE UNDER GARMENT JUST GOT BETTER

CODE: CB589

Following international success BCB is proud to launch the mk3 version of the Blast boxer - the original pelvic protection garment.

- Sculpted design - improved look and increased comfort
- Greater protection - less weight - (less than 150 grams (5.3oz) for size medium)
- Breathable fabric - same thermal burden as regular underwear

- Laboratory and field tested
- Fully Fire Retardant
- Anti microbial and anti odour
- No ballistic degradation following washing
- Fully Berry compliant if required
- Patented





## CERAMIC PLATES

**CODE: PB06D**

Up armour plate for protection from rifle and armour piercing (ap) rounds. Contoured ceramic/ pe (uhmpe) designed.

- **Testing:** ballistic protection, when worn with body armour vest is up to NIJIV.
- **Material sizing:** 250mm x 300mm. One size only.
- **Weight:** approx. 3 Kg per plate.
- **Material/construction:** composite ceramic plate. Velcro on body size to correspond with affixation to velcro in vest
- **Labelling:** bcb label. Size, care/ use, washing instructions
- **Packing instructions:** polybag
- **colour:** two per set



## GENERAL VEST

**CODE: CB094**

This is a very versatile body armour vest solution suitable for wide range of users.

- Hard wearing 1000D Coated Nylon Outer Fabric
- Polyester/Cotton Lining
- Internal pockets for insertion and removal of NIJ IIIA Soft armour panels
- External Front and Back Drop In Style Plate Pockets for Hard Armour Inserts Plates
- Internal body belt
- Forward Fastening
- Re-enforced extraction handle on rear of vest
- Optional MOLLE webbing for pocket and equipment attachment
- **Sizes:** S, M, L, XL. Additional sizes are available upon request including made to measure.
- **Colour:** Black, Navy, UN Blue and Tan. Additional colour options are available upon request.



## MODULAR VEST

**CODE: CA124**

This is a modular vest design.

- Hard wearing 1000D Coated Nylon Outer Fabric
- Breathable Mesh Lining
- Internal pockets for insertion and removal of Soft armour panels
- External Front and Back Plate Pockets for Hard Armour Inserts Plates
- Internal body belt
- Forward Fastening
- Pull down groin modular upgrade
- Re-enforced extraction handle on rear of vest
- Upper collar and shoulder modular upgrade system
- 360° MOLLE webbing for pocket and equipment attachment
- **Sizes:** S, M, L, XL. Additional sizes are available upon request including made to measure.
- **Colour:** Black, Navy, UN Blue and Tan. Additional colour options are available upon request.



## BALLISTIC HELMET

**CODE: CL192**

PASGT Style.

Level of protection to US NIJ IIIA.

- **Testing:** ballistic protection to nij level iiiia
- **Sizing/dimensions/weight:** specialised (not in size chart at document end)

Unit (mm)	small	medium	large	x-large
<b>To fit head size</b>	510-550	540-590	580-620	610-670
<b>Height (internal)</b>	163	167	171	179
<b>Length (internal)</b>	244	251	263	280
<b>Width (internal)</b>	214	219	230	242
<b>Surface area (cm<sup>2</sup>)</b>	1105	1169	1266	1390
<b>Approx weight (grams)</b>	1350	1450	1550	1650

- **Material/construction:** aramid 100%. Shell made of aramid, rubber edging, suspension system made bing
- **Components:** helmet with integrated comfortable chin strap
- **Labelling:** Bcb label. Size, care/use, washing instructions
- **Colour:** Black, sand or UN Blue



APPROXIMATELY 75% OF THE WORLD'S POPULATION AND HALF OF THE LEAST DEVELOPED COUNTRIES ARE EXPOSED TO EXTREME EVENTS SUCH AS EARTHQUAKES, FLOODING AND CYCLONES.

**SANDBAGGER**

BRAINS NOT BRAWN - 5 TIMES MORE SANDBAGS FILLED PER MAN HOUR

CODE: CM999

The wide mouth hopper combined with the unique twin bag slide system allows either:

- One person to fill 2 bags at once or
- Two people to fill sandbags continuously

Will work with all types of Sandbags!

The BCB Sandbagger collapses to aid transportation and storage and can be erected in seconds. All parts remain attached which eliminates the possibility of loss and the machine is completely maintenance free. With the saving in labour cost the sandbagger will pay for itself in the first day of use.

Sandbags (and lots of them) are essential for protection against blast, bullets and floods.

When you need them you want them quickly. The Sandbagger will help you produce all you need, right where you need them.

**Robust:** The design loads structurally the strongest points.

Single steel tubing.

**Quality:** steel structure used throughout.

Feet can be pegged into the ground.

**Compact:** Folding legs reduces its size by half for transport, or storage. Eight per Euro pallet 120cm high. No detachable components to lose. Light enough for one person to carry.

**Flexible:** The feet allow it to be used in a soft, dry sand. It can be used with dry earth or shale. Its strength and its large hopper mean it can also be filled by a small mechanical digger.

Easy bag attachment and smooth slide mechanism allow it to be operated with gloved hands.

- Virtually maintenance free
- Few Moving Parts
- Rust Proof
- Plastic Coated finish
- Easy to use - little training needed
- Easily portable and stackable
- Quick fill and removal of sandbags
- Can be used with dry soil, salt or aggregates
- Can be used with synthetic or hessian types of sandbags
- Can be erected in less than one minute!

NATO approved: NSN-4235-99-599-9760



Scan here with your Smartphone to view this product in action



**SANDBAGS**

CODE: CM999A

Hessian Sandbag. Ideal for more robust uses that may require an extended temporary purpose, for example, continued flood prevention and defensive walls.

Dimensions: 33cm x 76cm (13" x 30")

Capacity: 28.5Kg damp sand or 25.5Kg dry sand



## INFLATABLE RESCUE TENTS

CODE: CT101



type:	GTX-10
Internal useful area (m2)	10
External dimensions (mm)	3 700 × 3 100 × 2 350
Internal dimensions (mm)	3 700 × 2 700 × 2 150
Packed dimensions (mm)	1 000 × 900 × 500
Weight (kg)	60
Tube diameter (mm)	200/230
Number of air chambers	1
Number of inflatable /safety relief valves	2/1

Note: Data in the chart are indicative. Upon customers request other dimensions are possible.

- Easy **deployment within a few minutes** after being connected to air supply
- Inflatable with pressure air or electrical blower
- Quick-coupling device to connect the pressure air supply
- Safety relief valve
- **Inflatable structure** with two-chambers
- **High air tightness and strength** of the inflatable structure
- Tent roof made from PVC coated fabric in white, yellow, orange, red, khaki green colours
- Tent floor made from a **high-strength material** with antiskid treatment
- Tent entrance is equipped with zip fasteners, at the floor there are reversible canvas fasteners with rings
- Ground fastening flaps and guy ropes on support arches of the structure to secure the stability in all weathers, on a hard surface the tent can be anchored by means of weight bags filled with water or any other weight placed on the ground fastening flaps
- On the structure inside the tent, there are fastening straps for lamps, devices and similar
- Venting mesh over the entrance to ensure a natural air exchange
- Side walls contain 2 closable openings with diameter 350 mm to connect heating, air condition
- Side walls contain 2 closable openings with diameter 150 mm to connect electro installation cables, hoses
- **Anchor and repair set and hand pump** are included
- Packed in a **transport bag**
- Ideal base during a rescue action
- For short-term and long-term use in many areas – in case of events with an immediate need for hinterlands, for accommodation of people, material storage and similar.
- Long lifetime with only minimum maintenance and repair required
- Selection from many types, sizes and colours
- Easy handling and operation
- Service centre in the manufacturer's plant



**On request**

- Three-layers windows – roof material, film, net
- Removable floor, i.e. attached by means of Velcro
- Removable hygiene liner
- Removable insulation liner
- Lengthwise or crosswise partition curtains to divide the inner space
- Connecting passages for connection of tents into bigger units and combinations, e.g. field hospitals
- Connecting passage for connection between tent and container
- Front shelter for container
- Side (technical) entrance
- Weight bags to be filled with water for anchoring the tent on a hard surface

**Additional accessories:**

- heating
- air condition
- additional solid floor
- lamps etc.

**Material used**

- Floor – PES textile double-sided PVC coating, high-strength, abrasion proof, water-proof, with anti-skid modification, surface weight approx. 520 g/m<sup>2</sup>
- Inflatable frame – PAD fabric double-sided rubber mixture coating, high strength, abrasion resistant, air-proof
- Internal partition curtain – PES fabric one-side PUR coating, water-proof
- Isolating liner – Quilted material consisting of three layers: PES fabric, PES fleece and PES fabric resp. non-woven, surface weight approx. 250 g/m<sup>2</sup>

**Roof:**

- PES fabric one-sided PVC coating, high-strength, water-proof, surface weight approx. 300 g/m<sup>2</sup>, or
- PES fabric double-sided PVC coating, high-strength, water-proof, surface weight approx. 420 g/m<sup>2</sup>, or
- PES fabric double-sided PVC coating, high-strength, water-proof, self extinguishing, surface weight approx. 700 g/m<sup>2</sup>
- Internal partition curtain – PES fabric one-side PUR coating, water-proof.
- Isolating liner – Quilted material consisting of three layers: PES fabric, PES fleece and PES fabric resp. non-woven, surface weight approx. 250 g/m<sup>2</sup>.

*Fastening for lamps**Venting mesh**Opening for heating**Accessories for the tent*

1

**FIELD MEDICAL BOX****CODE: CA128**

- Ideal for storage of medicines, bandages and surgical equipment
- Small oxygen cylinder storage included.
- Flexiglass protection against dust & sand.

2

**LARGE MILITARY STORAGE BOX****CODE: CA129**

- Lightweight, durable and seismic resisting, waterproof, moisture proof, dust proof, heat and corrosion resisting.
- Convenient to be carried and suitable to storage firearms, laptop, medicine, maintenance tool, photographic equipment, miniature instruments, stationery and so on.
- Comfortable handle, air-tight and waterproof.



3

**DOUBLE FIELD DESK****CODE: CA130**

A compact case that turns into a functional, strong and stable table.

- 4 central drawer storage
- Fold up easily into transportable box
- Can also be used as an emergency medical table
- **Size:** 2000 x 630 x 730mm

4

**GENERAL PURPOSE CASE****CODE: CA132**

For storing firearms, computer equipment, medicines, tools, photographic equipment.

- Various padded inserts available for added protection.
- Lightweight, durable, beat and seismic resisting, waterproof, moisture proof, dust proof, heat and corrosion resisting.
- Convenient to be carried and suitable to storage firearms, laptop, medicine, maintenance tool, photographic equipment, miniature instrument, stationery and so on.
- Comfortable handle, air-tight and waterproof.

5

**MILITARY CARRYING CASE****CODE: CA131**

- Lightweight, durable and seismic resisting, waterproof, moisture proof, dust proof, heat and corrosion resisting.
- Convenient to be carried and suitable to storage firearms, laptop, medicine, maintenance tool, photographic equipment, miniature instrument, stationery and so on.
- Comfortable handle, air-tight and waterproof.

6

**MEDIUM-SIZE STORAGE BOX****CODE: CA129M**

- Includes padded inserts for added protection.
- Lightweight, durable, beat and seismic resisting, waterproof, moisture proof, dust proof, heat and corrosion resisting.
- Convenient to be carried and suitable to storage firearms, laptop, medicine, maintenance tool, photographic equipment, miniature instrument, stationery and so on.
- Comfortable handle, air-tight and waterproof.



7

**COOLER BOX (10 LITRE)**

**CODE: CA134**

- Heat and cool resistant
- Durable and shock resistant

8

**COOLER BOX (35 LITRE)**

**CODE: CA133**

- Heat and cool resistant
- Durable and shock resistant

9

**CARRY CASE**

**CODE: CA135**

- Lightweight, durable, beat and seismic resisting, waterproof, moisture proof, dust proof, heat and corrosion resisting.
- Convenient to be carried and suitable to storage firearms, laptop, medicine, maintenance tool, photographic equipment, miniature instrument, stationery and so on.
- Comfortable handle, air-tight and waterproof.

10

**CARRY BOX**

**CODE: CA136**

- Put all kinds of inserts which reduce the tooling cost.
- Double wall structure, uniform wall thickness, no leaking and shock proof, corrosion resistance
- Variety colours available
- Economic and environment friendly
- One time process, seamless and hollow
- Over 5mm wall thickness, strong and high protection ability

11

**PORTABLE WHEELED PULL CASE**

**CODE: CA137**

- Put all kinds of inserts which reduce the tooling cost.
- Double wall structure, uniform wall thickness, no leaking and shock proof, corrosion resistance.
- Variety colours available
- Economic and environment friendly
- One time process, seamless and hollow
- Over 5mm wall thickness, strong and high protection ability

Field furniture items are supplied in olive or black. Other colours are available subject to a small minimum order quantity. Colour options are: Grey, Blue, Yellow and orange.. The Cooler boxes are available in white only.

# SQ 4RECON

REMOTELY PILOTED AIRCRAFT SYSTEM [RPAS]



Scan here with your  
Smartphone to view  
this product in action



## IDEAL FOR URBAN AND RURAL SEARCHING

- Long range Vertical Take off and Land (VTOL)
- Long flight duration
- Lightweight
- Automatic
- Sense & Avoid (S&A)
- Switchable Cameras

### CODE: UAV004

**The SQ-4 RECON has recently undergone a complete restructuring in its electronic capability and exterior design. The whole flight control system has been simplified making it4 easy to understand and control while retaining many of the original features. SQ-4 RECON is an autonomous Quadcopter with an aerial video platform powered by our own BCB software and firmware.**

SQ-4 RECON has powerful motors matched with high-lift propellers for smooth flight. Additionally, new and improved flight functions have been added making flight quick and easy, functions include, fly to here / easy waypoint / camera actions / loiter / circle, follow me and automatic RTL in the event of any fail-safe action.

The SQ-4 RECON RPAS together with its choice of Ground Control Station, fit easily into a small rucksack with full supporting hardware such as spare batteries, propellers, chargers etc. The total pack weight is less than 2.5 kilo when being transported and 1.5 kilo when used operationally making it easy for the operator to handle.



“THE SQ-4 RECON PRESENTS A TOTALLY NEW CONCEPT OF AERIAL OBSERVATION PLATFORM WITH UNPARALLELED FUNCTIONALITY AND ABILITY. “



### MANUAL OR AUTOMATIC COMMAND AND CONTROL

The SQ-4 RECON is a closed communication flight system between the drone and the operator providing full automatic and manual flight. (Note: onward transmission of downlink video can be forwarded via the internet to any other location). It can interact in operations, has unlimited waypoints, area search, circle area of interest, land, RTL, hold position and follow me. It can also be controlled in manual mode using joystick or it can be run in automatic waypoint or search mode. The system is easy and quick to learn. In essence the SQ-4 RECON provides real-time visual surveillance of location and movement. This improves operational capacity by facilitating prompt operational intelligence.

### POWERFUL

The four 3 phase raced brushless motors and matches propellers give optimal power and efficiency for their size and weight. Controlled by purpose designed Electronic Speed Controllers (ESC) maximise this efficiency and incorporate an automatic motor diagnostics active monitoring, which detects if a motor is failing for some reason, and compensates automatically to correct any problems with the other motors. The pulse by pulse limiting gives an incredibly stable, quiet and consistent thrust.

### VIDEO / CAMERA

The SQ-4 RECON has two high resolution cameras that can be switched from 110 degree angle to 135 degrees. The 3.6mm lens on each camera provide a 87 degree FOV diagonal and has a low light sensitivity. Night vision is aided by a powerful spot light that is strong enough to illuminate a room or provide searching at night (limited to 20 meters range).

### SENSE AND AVOID – S&A

The SQ-4 RECON is fitted with LIDAR system. This allows the drone to hold position (Loiter mode) avoid structures or objects moving towards it. Where there is sufficient aperture for penetration the SQ-4 RECON can be used to search internally or flown down narrow streets and alleyways.

### GROUND CONTROL STATION (GCS)

The SQ-4 RECON uses modified open source software for it to fly a wide variety of missions both manually and automatically. Mission Planner is a tried and tested ground control station platform and is compatible with Windows only. Mission Planner can be used as a configuration utility or as a dynamic control supplement for your automatic vehicle. SQ-4 RECON can also fly using RC or Android DroidPlanner GCS. The

various GCS software can be mounted on either a laptop or small tablet depending on the requirement.

The SQ 4 RECON is controlled either by the attached joysticks or a pre-programmed route with additional commands. The GCS offers simultaneous visual mapping and RPAS location as well as direct video streaming from the on-board camera. Pre-programmed waypoint missions of search area mission can be interrupted and the RPAs reassigned during flight.

The ability to have the SQ-4 RECON ‘follow me’ allows the operator to have the drone follow the GCS. Mapping is embedded prior to operations to provide excellent geo-referenced maps when internet is not available. Pre-programmed flight missions can also be built prior to the operation commencing ready for immediate use once the operation has started.

### DROIDPLANNER

DroidPlanner is an excellent GCS that is ideal when a laptop is not convenient. It allows for a wide variety of search patterns which the SQ-4 RECON will carry out in autonomous mode. The search patterns can be adjusted for flight height and lane width so that the entire area can be visually covered. This function is designed for deployment in Search & Rescue operations / law enforcement etc.

In DroidPlanner 2.0 you’ll find two primary screens for interaction: Telemetry and Planning. From the telemetry screen you can quickly assess overall aircraft health and what it is doing. You can also enter Guided mode at your current altitude with a long press - other quick actions from the Telemetry screen include Land, Home (RTL), Loiter, and Follow me.

### COMMUNICATIONS

The new system supports the SQ-4 RECON to fly in most countries with frequency compliance including, 2.4GHz / 5.8GHz / 433MHz / 915MHz (USA) Ranges are dependant of ground clutter and vary on the type of terrain over which the drone operates. Tested examples are as below in the worst conditions, and much higher ranges have been achieved:

- › Building and alleyway penetration 300m (985 ft) to 500m (appropriate opening required)
- › Dense Urban Area 800 m (2624 ft) to 1000m
- › Undulating Open ground 1500 m (4921 ft) to 2500m
- › Telemetry Waypoint Navigation 2500m (8202 ft) to 4000m
- › Video Link 2500m (8202ft)

*Note: Flight range and video range is dependant line of site, drone height and the amount of ground clutter or electronic interference. Ranges also adjust depending on the frequency used.*



The SQ-4 Ground Control Station (GCS)



## FUNCTIONS:

The SQ-4 is fitted with a wide array of functionality designed to be quickly and easily deployable. The list below is just some of the more prominent functions.

- > Pre-flight motor test
- > Auto Take-off / Land
- > Circle
- > Go To (any place on the map)
- > Unlimited waypoints
- > Follow me
- > Geo-Fence flying
- > Search Pattern
- > Loiter
- > TRL
- > Off line maps
- > Fail-safe on loss of communications

## OPTIONAL EXTRAS:

- > FLIR Thermal camera

## SPECIFICATION OVERVIEW:

- **Weight:** 642 grams (22.64 oz)
- **Size:** (L): 240 x (W): 240 x (D): 90 mm (9.4 x 9.4 x 3.5")  
Battery Pack 227grams (providing 30 mins flight duration)
- **Average Flight Speed & Wind Tolerance:** 8 meters per second (15 knots) flight speed / capable of staying airborne in 18 knot winds.
- **Max Operating Height:** Best at 50 meters (164 feet) can reach 400 meters (1311 feet) plus.
- **Noise Level:** At take-off, drone emits 71db at 1 meter, in the air at above 5 meters is will be between 15 – 25 dB (human whisper) above 20 metres the drone is inaudible.
- **GPS:** Anti-Jamming Operating Temperature: -10°C (14°F) to + 50°C (122°F)

We can also provide a range of body worn cameras which transmit images, positions and biometrics over 3G OR 4G.

*Note: Due to our continual product development we reserve the right to alter or amend any product, specification or colour shown within without prior notice.*



**SMOOTH WATERPROOF MOTORS WITH HIGH EFFICIENCY**

High performance motors for enduring stability and smooth movement.

**CARBONFIBRE MONOCOQUE STRUCTURE**

Ensures lightweight operation and maximum flight stability.

**CARBON FIBRE LIGHTWEIGHT GIMBAL**

Stabalised gimbal with thermal and conventional camera.

**HIGH PERFORMANCE CARBON PROPELLERS**

High performance ultralight CFD desiged rotor propellers for enduring stability, smooth movement and silent UAV operation.



**UX-SPYRO**

**CODE: UAV007**

SPYRO is UAVision new concept of VTOL (Vertical Takeoff and Landing) UAV. SPYRO presents a new definition in aerodynamics, flight stability, payload capability and flight time.

Not only it operates almost with no noise and easily merging with the operational scenario as it is capable of sustaining high winds and adverse weather.

We design an ultra-light carbon gyro-stabilized gimbal with visible and thermal infra-red cameras that can be easily installed on SPYRO.

UAVision makes also available a generic gyro-stabilized brushless gimbal or customized platforms for unique cameras and payloads.

**FEATURES**

- Highly stable auto hovering
- Autonomous Navigation – Waypoints based Mission
- Automatic take-off and landing
- Bidirectional datalink with 1km range
- Auto stabilized payload (pan, tilt & roll gimbal)
- Analog or Digital Encoded Video link
- Visible, thermal and NIR cameras

**TECHNICAL SPECS**

- Monocoque carbon frame
- UAVision Advanced flight & NAV control system
- CFD ultra low noise propellers
- **MTOW:** 12Kg
- **Wind limit:** 35 Km/h (wind burst)
- **Flight time up to:** 30 minutes
- **Payload Weight:** 4 Kg
- Autopilot blackbox
- Engine System - 4 Electrical motors
- 100A high speed brushless controllers with UAVision CAN BUS communication

**EXTRAS**

- UAVision Automatic Target Lock System
- Mini SAR Radar

**CARBON FRAME STRUCTURE**

Rugged and light carbon structure with all replaceable parts.

**HIGH PERFORMANCE CARBON PROPELLERS**

Super lightweight and silent carbon propellers for smooth flying.

**HIGH EFFICIENT SUPERSTRONG MOTORS**

Best performance for all projects

**BATTERY SUPPORT**

Easy slip-in battery replacement.



**LANDING GEAR**

Sturdy but lightweight landing gear for safe take-off and landing.

**UX-401**

**CODE: UAV008**

Quadcopter UX-401 is a small unmanned aerial vehicle (SUAV) designed for general applications with very good stability and image quality.

Customers can also integrate a Pan&Tilt Gimbal for medium size camera stabilization and control.

The system is designed to achieve maximum stability and vibration-free operation.

With automatic take-off and landing system, UX-401 provides to the user the assisted-piloted mode, for anyone with minimum training could operate the Quadcopter on a natural simple and secure way. In order to focus on your job, and not on the flight.

**FEATURES AND CAPABILITIES**

- Highly stable auto hovering
- Automatic take-off and landing
- Auto stabilized payload (pan, tilt & gimbal)
- Autonomous Navigation – Waypoints based Mission (up to 20)
- Bidirectional data-link (range up to 1 km)
- Analog or digital encoded video link

**TECHNICAL**

- Carbon frame (designed and produced by UAVision)
- UAVision Advanced flight & NAV control system
- **MTOW:** 9KG
- **Wind limit:** 25 Km/h (wind burst)
- **Flight time up to:** 20 minutes
- **Payload Weight:** 2 Kg
- Engine System - 4 Electrical motors
- Autopilot blackbox
- 100A high speed brushless controllers with UAVision CAN BUS communication

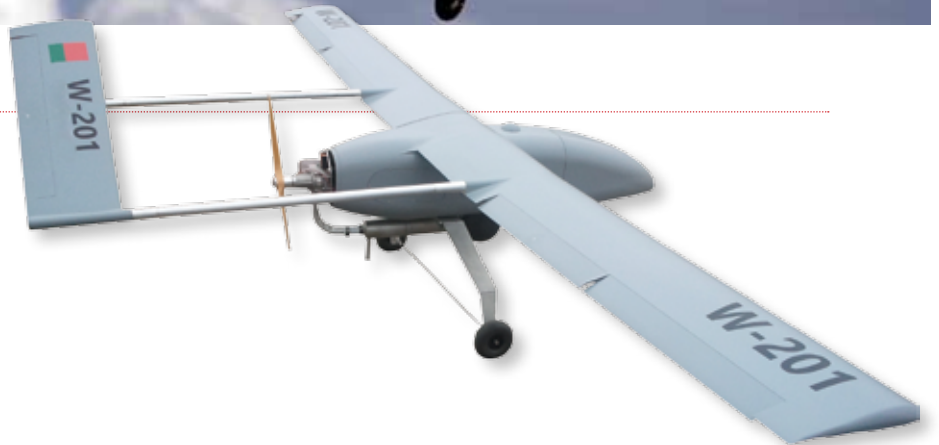


## W-201 FIXED WING UAV

### CONTACT US FOR MORE INFORMATION

W-201 is a tactical medium range fixed wing UAV.

- High volume payload bay with interchangeable nose for fast setup with different sensors, radar etc as optional extras
- Plus integrated 360° Gimbal for high resolution day, night and thermal camera (hyperspectral camera is an optional extra)
- Modern aerodynamic build for long range flight with low drag wing shape
- Built to operate in extreme environments



### PERFORMANCE

**Range:** 300 km (return mission)

**Endurance:** 10 hours

**Payload weight:** 5 kilograms

**Maximum take-off weight:** 25 kilograms

**Wingspan:** 3.9 meters

**Cruise speed:** 70 kilometers per hour

**Max speed:** 140 kilometers per hour

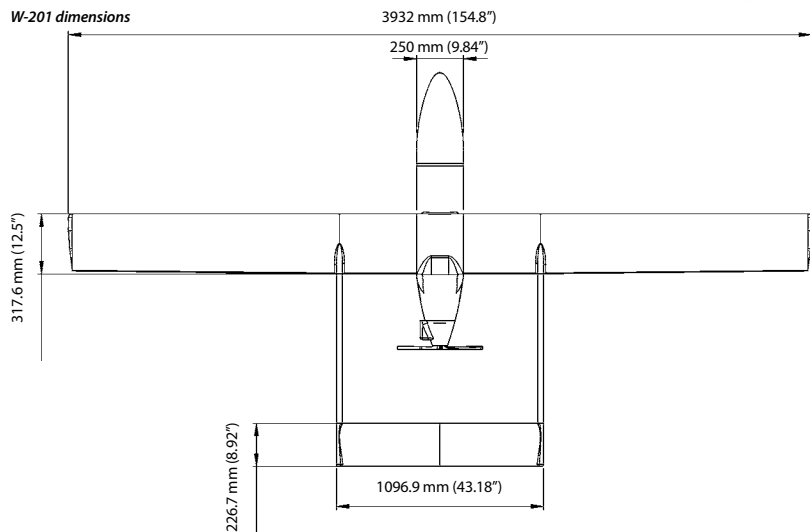
**Stall speed:** 50 kilometers per hour

**Take off and land:** runway

**Power:** 2 stroke unleaded petrol

**Altitude:** 10,000 feet

W-201 dimensions

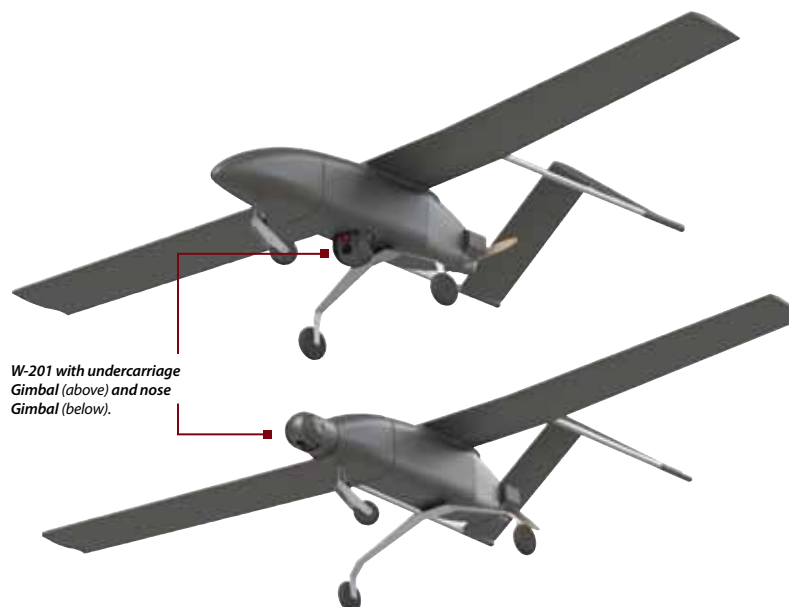


### SUITABLE PAYLOADS:

- Autostabilized Gimbal with day/night Camera and Thermal Camera as standard
- SAR - Synthetic Aperture Radar
- Hyperspectral Cameras
- **Adaptive Vision Tracking System (VTS)**  
This will learn what you are looking for a moving or fixed object, shape or even a face at close range. It will then highlight the object or face when it finds it, in red on the screen (see below).



Vision Tracking System (VTS) in action



W-201 with undercarriage Gimbal (above) and nose Gimbal (below).

SCAN  
WITH YOUR  
SMARTPHONE  
TO VIEW VIDEO





**UXG-50**

**CONTACT US FOR MORE INFORMATION**

- 3 Axis high speed gyrostabilized brushless gimbal especially designed for GoPro type cameras.
- Gimbal control can be done with UAV GCS or with (compatible) conventional RC ground control stations.
- Giving to user's entire freedom of movement and high quality on image stabilization, this gimbal is optimized for broadcasting, media, sports events, outdoor and nature videos.

**STAND ALONE GIMBAL CONTROLLER SYSTEM**

This system is only necessary if you intend to use UXG 300 or 350 on a third party system.

**MAIN FEATURES:**

- Lightweight
- Developed and built to use with any UAV or standalone
- Reinforced motors to support HDMI cable connection
- With GoPro battery charging system connected to the UAV
- **Control Interface:** RS-232; RS485; CAN
- **Power Specs:** 12VDC; 25 W (max)
- **Size:** 115 x 157 mm

- **Weight:** 890 g
- Gimbal control can be done with UAV GCS or with (compatible) conventional RC ground control stations
- **3 axis high speed control:**  
**TILT:** -90° to 90°  
**PAN:** 360° non continuous  
**ROLL:** -45° to 45°  
*Closed loop control on pan, tilt and roll*



**UXG-100**

**CONTACT US FOR MORE INFORMATION**

This is a hi-performance broadcast grade brushless gimbal, specially design to accommodate video and photo cameras. It can support cameras up to 1.5 kg.

- 3 axis high speed gyrostabilized brushless gimbal for generic cameras
- For perfect stability and weight efficiency the gimbal structure is made from carbon fiber monocoque bodies.



**UXG-300**

**CONTACT US FOR MORE INFORMATION**

- **2 Axis high speed gyrostabilized gimbal**
- **Rotation Limits:** 360° continuous pan, + 10° / -160° tilt
- **Slew Rate:** 150°/sec
- **Pointing Resolution:** 873 μRAD
- **Daylight camera SONY CCD**
- **Image Device:** 1/3-type CMOS
- **Effective Pixels:** 2000000 pixels
- 10x optical zoom ;12x digital zoom
- **Focus System :** Full Auto
- Trigger; Manual; Infinity; Near Limit Setting
- **HFOV (Horizontal Field Of View):** 50° - 5.4°
- **Video Out Analog:** NTSC or PAL and Full HD
- Output Y/Pb/Pr (optional please ask for quote)
- **Control Interface:** RS-232 ;RS485; CAN
- **Power Specs:** 12VDC ;25W (max)
- **Mechanical Specs :**
- **Size:** 170 x 216 mm; Weight 1600g (based on gimbal configuration)



**UXG-350**

**CONTACT US FOR MORE INFORMATION**

- **2 Axis high speed gyrostabilized gimbal**
- **Rotation Limits:** 360° continuous pan, + 10° / -160° tilt
- **Slew Rate:** 150°/sec
- **Pointing Resolution:** 873 μRAD
- **Daylight camera SONY CCD**
- **Image Device:** 1/3-type CMOS
- **Effective Pixels:** 2000000 pixels
- 10x optical zoom ;12x digital zoom
- **Focus System :** Full Auto
- Trigger; Manual; Infinity; Near Limit Setting
- **HFOV (Horizontal Field Of View):** 50° - 5.4°
- **Video Out Analog:** NTSC or PAL and Full HD
- Output Y/Pb/Pr (optional please ask for quote)
- **Thermal IR camera**
- **Type:** FPA, uncooled microbolometer
- **Spectral range:** 25um
- **Resolution :** 384x288
- **Digital zoom:** 2X/4X digital zoom function
- **Thermal sensitivity:** <60mK@ 300K
- **FOV :** 24°x 18°
- **Video output:** 60 Hz NTSC or 50 Hz PAL
- **Frame rate:** 30Hz
- **Control Interface:** RS-232 ;RS485; CAN
- **Power Specs:** 12VDC ; 25W (max)
- **Mechanical Specs :**
- **Size:** 170 x 216 mm; Weight 1600g



**UXG-350 NIR**

**CONTACT US FOR MORE INFORMATION**

- **2 Axis high speed gyrostabilized gimbal**
- **Rotation Limits:** 360° continuous pan, + 10° / -160° tilt
- **Slew Rate:** 150°/sec
- **Pointing Resolution:** 873 μRAD
- **Daylight camera SONY CCD**
- **Image Device:** 1/3-type CMOS
- **Effective Pixels:** 2000000 pixels
- 10x optical zoom ;12x digital zoom
- **Focus System :** Full Auto
- Trigger; Manual; Infinity; Near Limit Setting
- **HFOV (Horizontal Field Of View):** 50° - 5.4°
- **Video Out Analog:** NTSC or PAL and Full HD
- Output Y/Pb/Pr (optional please ask for quote)
- **NIR camera**
- **Type:** CMOSIS CMV4000 NIR enhanced
- **Cell size:** 5.5 μm
- **Resolution :** 2048x2048
- **Video output:** IEEE 802.3 1000baseT
- **Frame rate:** 28.6 fps @maximum resolution
- **Control Interface:** RS-232 ;RS485; CAN
- **Power Specs:** 12VDC ; 25W (max)
- **Mechanical Specs :**
- **Size:** 170 x 216 mm; Weight 1600g

# TOTAL SUPPLY SOLUTION

For more than 30 years BCB has been manufacturing, designing and supplying personal survival and field equipment. We are proud of the lives our equipment has helped to save here at BCB.

We offer;

- In house design and development
- Fast worldwide distribution
- Reliable service
- Protective clothing
- Great value for money
- Ration Packs and Survival equipment
- Hygiene parcels
- Field kits and camp equipment
- First aid and medical packs
- Dependable service

## Responsive global distribution and support

we export over 80% of our sales; and have over 30 years' experience in the export market.

## We promise

Superior quality, innovative products, readily available and offering exceptional value.

## Our mission

To be the world's leading supplier of life saving equipment through innovation and design.

## Partnership for the future

We aim to develop a close symbiotic working partnership with your organisation. Please let us know how we can be of help and service to you.



**BCB International Ltd is proud to have supplied the UN, WFP and Red Cross for over 25 years**

Our UN Registration Number is 113481



OUR MISSION IS YOUR SURVIVAL

**SAVING AND PROTECTING LIVES IN HOSTILE ENVIRONMENTS, THROUGH INNOVATION.**

BCB ARE AT THE CUTTING-EDGE FOR DESIGNING AND MANUFACTURING SURVIVAL EQUIPMENT.



### UK and Worldwide

BCB International Ltd  
Clydesmuir Road  
Cardiff  
CF24 2QS

T: +44 (0)2920 433 700  
E: [info@bcbin.com](mailto:info@bcbin.com)  
F: +44 (0)2920 433 701



### USA

BCB International LLC.  
Unit D, Caswell Industrial  
6154 126th Avenue North,  
Largo FL 33773

T1: +1 727 754 4911  
E: [usa@bcbin.com](mailto:usa@bcbin.com)  
F: +1 727 754 4913  
W: [www.bcbinusa.com](http://www.bcbinusa.com)



### Libya

Golden Shield Co. Ltd  
86 Mistrata Street  
Tripoli, Libya

T: +218 21 444 6482  
Mob: +218 91 425 3826  
E: [taha53bcb@gmail.com](mailto:taha53bcb@gmail.com)



### Malaysia

Syaatheera Enterprise  
11A Jalan AU 5C/1  
Lembah Keramat,  
54200 Kuala Lumpur  
Malaysia

T: +6012 210 0340  
E: [info@bcbin.com](mailto:info@bcbin.com)