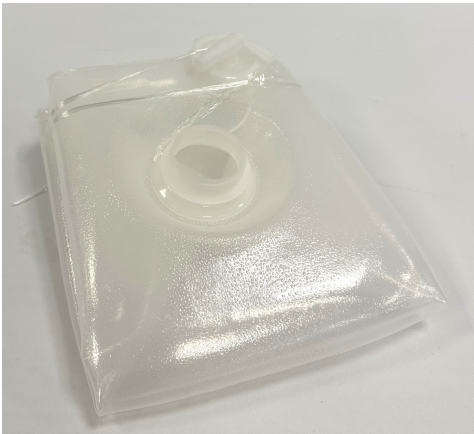


COLLAPSIBLE JERRY CAN 20L

ICRC/IFRC/IOM STANDARD



KEY FEATURES

- Collapsible 20L water container with handle for carrying and storing drinking water
- Impact-Resistant
- Can withstand temperatures between -20C to +50C
- Made from food grade low density polyethylene (LDPE)
- Customisable with spigot

MATERIALS

- **CONTAINER**

Manufactured food grade LDPE without toxic elements according to EN 1186-3-9 standard

- **OPERATING TEMP**

Can withstand temperatures between -20C to +50C

- **IMPACT RESISTANCE**

Impact resistant on hard surface when filled with maximum volume of 20L water. Complete drop test consists of 10 consecutive drops from a 2.00 m height. Test results is expressed as a product ranking according to the number of drops passed without damages or leakage. To be accepted, the water container must resist to a minimum of 3 drops

- **COLOUR**

Translucent

DIMENSIONS

CAPACITY

20L minimum

WEIGHT

270g minimum

INLET INTERIOR DIAMETER

30mm minimum

BUILT-IN HANDLE

90 x 30mm (LxW) minimum

STRING

1mm diameter and 120mm long minimum

COLLAPSIBLE JERRY CAN 20L

ICRC/IFRC/IOM STANDARD

JERRY CANS

PACKING AND SHIPPING

	Without Pallets	CRI Pallets	Euro Pallets
Content	30 pcs	240 pcs	240 pcs
Dimensions	64 x 40 x 51cm +- 20%	115 x 80 x 105cm +- 20%	120 x 80 x 78cm +-20%
Weight	Min. 12.5kg	Min. 118kg	Min. 118kg
Volume	0.13m3 +- 20%	1,376 m3 +-20%	1,376 m3 +-20%

ESTIMATED LOADABILITY*

Container	Without Pallets	CRI Pallets	Euro Pallets
20' DC	6,120 pcs	4,800 pcs	4,800 pcs
40' DC	12,240 pcs	10,080 pcs	10,080 pcs
40' HC	14,850 pcs	10,080 pcs	10,080 pcs

INTERNATIONAL