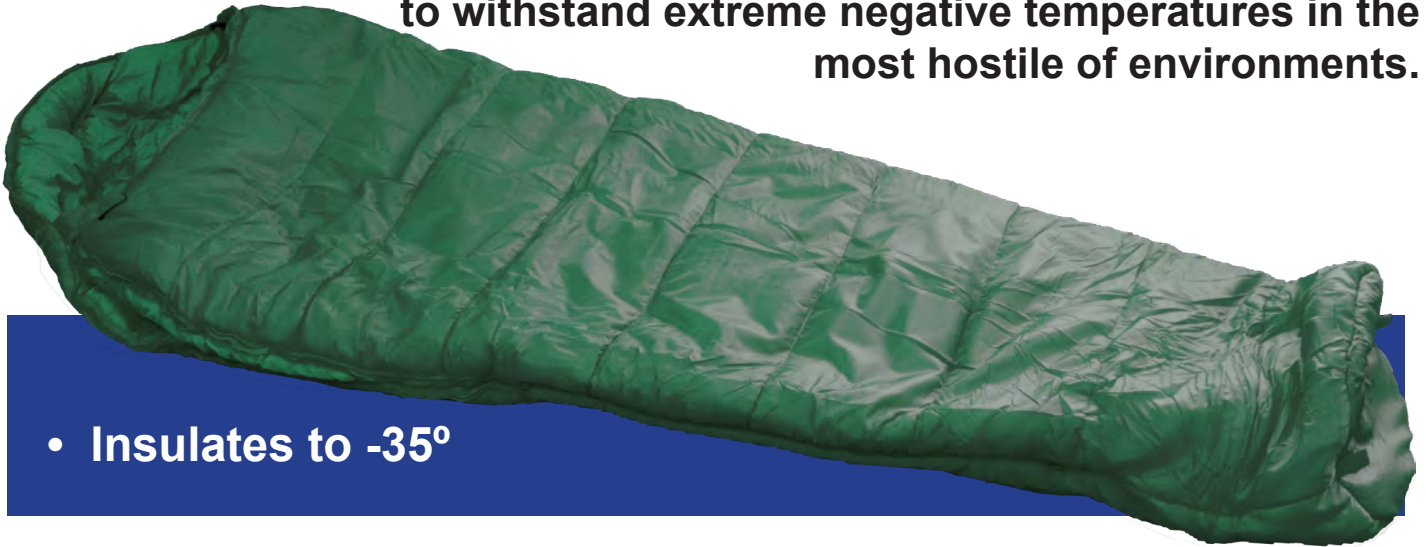




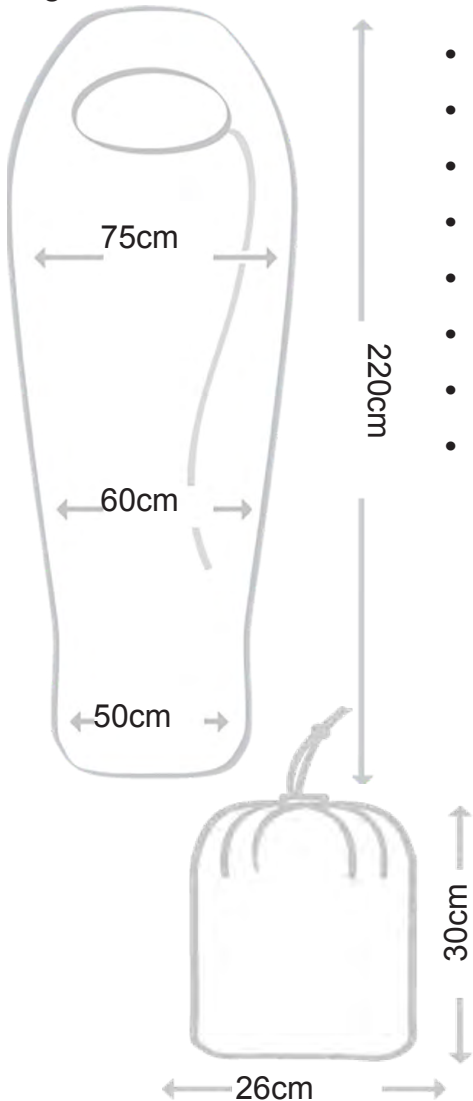
OLIF 35 SLEEPING BAG

The Olif is a top of the range sleeping bag designed to withstand extreme negative temperatures in the most hostile of environments.



- Insulates to -35°

Manufactured to maximise warmth for long periods, with water-resistant fabrics to maintain comfort. The Olif was designed to combine portability along with maximum protection against the harshest of cold weather conditions.



- Designed to withstand extreme temperatures □
- Tested to EN ISO 23537-1:2016
- Filling: 200g/msynthetic micro-fibre
- Outer: 70D Ripstop nylon
- Lining: 40D Nylon
- Mummy shape with hood
- Supplied with Stuffsack
- Olive Green



CODE: CT1200

Extreme:	-35°	-31°F
Low:	-14°	6.8° F
Comfort:	-7°	19.4° F
Weight:	2.4Kg	5.29 lbs
Packed:	30 x 26 x 26cm	12 x 10.24 x 10.24 inches



TACTICAL Winter Camo Jacket

LIGHTWEIGHT, TOUGH & WATER RESISTANT WITH EXTRA THICK INSULATION

- Lightweight, strong Ripstop fabric
- Water-resistant zippers with large tags
- Insulated, drawstring hood
- Drawstring at lower waist
- High chin guard for warmth
- 2 Inside pockets
- Adjustable cuffs
- 2 x side-zip upper chest pockets
- 2 x double-layer, lower front pockets
- Zipped pockets with ID on upper arms

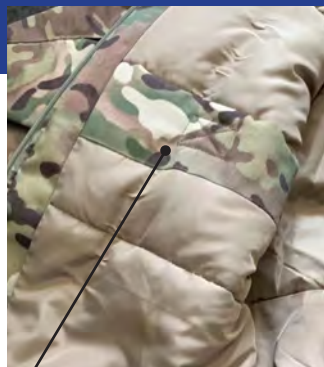


Water resistant & Insulated.

Lightweight. Breathable.



Extra warm 260gram Polyester body insulation



Inside pocket



Lower front double-layer pocket

CODE	SIZES
CODE CB734	S-M-L-XL-XXL
Fabric: Camo T65/C35 210 gsm Rip-stop	
Insulation 260 gsm Polyester (body)	
Washable at 40°	



WATERPROOF CAMO OUTERWEAR SET

Lightweight. Waterproof. Breathable.

This outerwear set has a 100% Polyamide + PTFE membrane with fully taped seams throughout, keeping it waterproof and breathable - HHof 3m+.



WATERPROOF TOP

- Lightweight, strong Ripstop fabric
- Full length, 2-way front zipper
- Pockets on Upper Arms
- Concealed hood in collar
- ID loop on Chest
- Adjustable Cuffs



Underarm zipper for ventilation



OVER TROUSERS

- Lightweight, strong Ripstop fabric
- Full leg double zipper to access pockets at top/footwear at ankle
- Ample cut at knee to allow bending/climbing
- Hook and loop fastening at ankle
- Elasticated waist with drawstring tightening
- Small, lightweight pack - Total weight 830gm



Upper arm pockets with hook & loop flaps

CODE	SIZES
CB733 (Jacket) CB732 (Trousers)	S
Fabric: Camo T65/C35 Rip-stop Colour Fast: Grade 3-5 Washable at 40°	M
	L
	XL
	XXL



ICE INSULATED COMBAT JACKET

Thermal WINTER JACKET with Stuffsack
Windproof, breathable, and water repellent

- Exclusive insulation from cold to -20°
- Fully insulated, detachable, fleece-lined hood
- Elasticated, peaked hood has drawcord-adjustment front and back
- Lined neck warmer for comfort and warmth
- Deep hand-warmer-style pockets lined with brushed polyester for added comfort and warmth
- Extended scooped rear shape protects lower back/kidney area
- Elasticated drawcord-adjustable hem traps air to aid insulation
- Fold-out chin guard
- Hook and loop adjustable cuffs

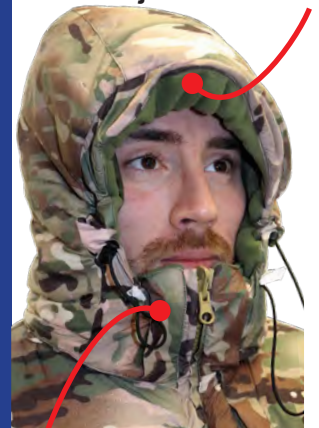


Rear scooped shape protects lower back



Rank Slide

Wired peak at front of adjustable hood



The High chin guard retains body heat

Drawstring back on hood



2 in 1

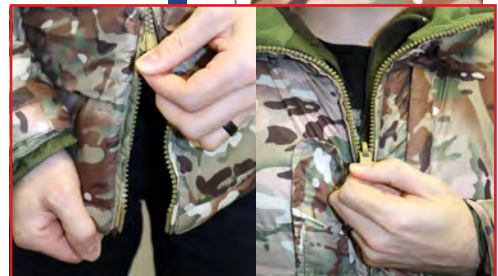
*Reversible Camo/Olive
all features on both*



Velcro ID mount



Zipped Arm & Chest Pockets



Concealed, 2-way, tough front zip with fabric baffle behind

CODE:	CB731
WEIGHT:	0.9Kg
SIZES:	S, M, L, XL, XXL



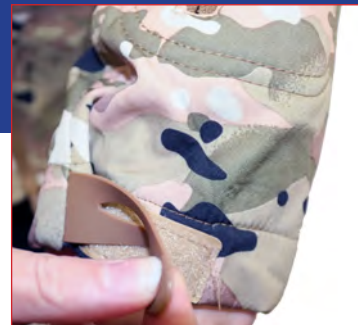
Soft Shell Camo Jacket

The soft shell fabric in this jacket retains heat, repels rain or snow, whilst allowing moisture to escape

- Windproof hood with drawstrings
- Fleece-lined
- Muffle pockets for warm hands
- Zipped pockets on outer arms
- Ventilation zip under arm
- Velcro ID mount on upper arm

COLOUR:

- Camo



Strong cuff adjustment



Upper arm pocket/
Velcro ID



Underarm Vent zip



Lower Back pocket
accessed from either side

CODE	SIZE
CB721	S, M, L,XL,XXL
Fabric	100% Polyester



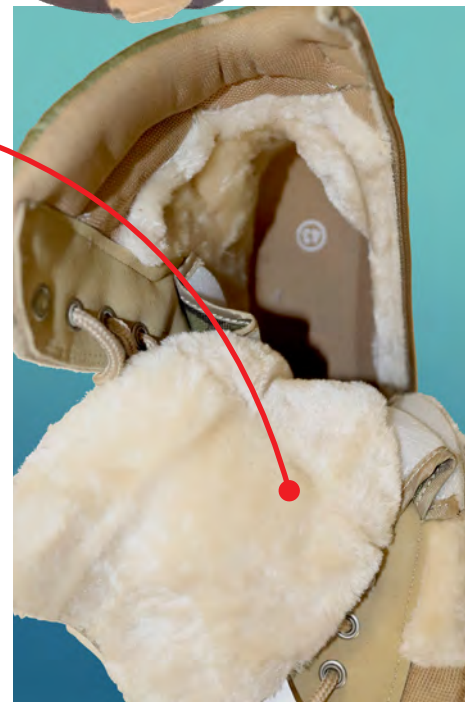
FLEECE-LINED CAMO BOOTS

**WARMTH
& COMFORT
THIS WINTER**



Features

- **Lightweight Cold Weather Boots**
- **Water Resistant & Breathable**
- **Fine fibre reinforced PU leather**
- **Thick Fleece liner and tongue**
- **Laces & inner side Zipper with tab lock**
- **Padded ankle for comfort**
- **MultiCam Camo-style upper and sole**
- **High traction sole**



CODE:	CB730
WEIGHT:	1.13Kg
SIZES:	Euro 38 - 46



Essential and useful everywhere

Cut the bungee cord to required length and tie it down each end. Alternatively, add the simple, loop-through plastic hooks (purchased separately)



- Heavy duty
- 100 meter length
- Flexible - cut to lengths you need
- Tough, quality construction
- Olive colour
- Easily attached to hooks when needed



- Heavy duty plastic hooks can be easily attached



CODE - HD PLASTIC HOOKS:	CM173A
GUAGE:	10mm
QTY:	20/pack

CODE - CORD:	CM173
GUAGE:	10mm
LENGTH:	100 meters



PMEK - Personal Mine Extraction Kit

The lightweight Personal Mine Extraction Kit (PMEK) is designed to be carried when traveling where anti personnel mines or IED's may be present. It attaches via Molle and contains components to safely avoid, and map out hostile zones.



Front



Back

The PMEK comes with a waterproof Aide Memoire which contains the best practice for using the kit as well as spotting potential warning signs and avoiding dangerous areas.

Metal Button



Velcro



Plastic Button



The item has been opened and closed 100 times. The lightsticks have been tested and last a minimum of 4 hours.

Contents:

ITEM	ALSO AVAILABLE AS SPARES
Mine Prodder with Point 30cm (non magnetic)	
Daylight Route Marking System - Red (suspect) x 5	
Daylight Route Marking System - White (safe) x 20	
Night Route Marking System - Red 4hr (suspect) x 5	
Night Route Marking System - Green 4hr (safe) x 20	
Trip Wire Feeler 1200mm	
Waterproof Aide Memoire (sample)	
Molle Pouch	

CODE	CK079
CK079	180 x 135 x 45mm
Weight	394g



80L Deployment Bag

Huge, tough deployment bag with 5 pouches and loads of practical features.



Water & Wear resistant

- Tough PU coated 1000D Nylon
- Capacity: 85 litres (total)
- Tough 2-way central zip
- Transparent interior document pocket
- Zipped pouch each end & 3 deep side pouches
- Side pocket with covered ID window
- Reinforced top handles
- Padded rucksack straps extend from base.
- Rucksack straps stowed when not in use
- 6 rubber feet on waterproof base
- Extra grab handle one end

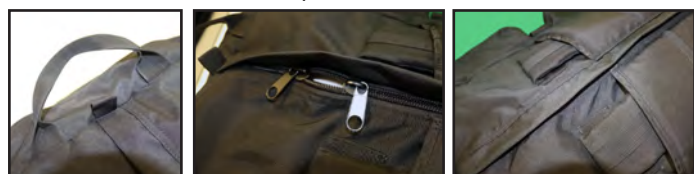
Carry as a bag with handles or as a rucksack with straps.



Pocket with ID window

Clear internal document pocket

Zipped end pouch



Grab handle

Tough 2-way zipper

Rucksack straps stowed under padded covers



PVC waterproof base with rigid baseboard

CODE	CA014B
Int. Size	L84cm x W34cm x D24cm
Weight	1.9 KG



MULTI-SPECTRAL CAM NET

9m x 9m

FEATURES

- Random pattern blends with natural background
- Double side printing options
- Light-weight
- Excellent visibility inside-to-out
- Improved crew-shading
- Reduced snagging
- Low storage and easily deployed
- All edges finished in 'Dutch lacing' allowing easy panel de/connection

TECHNICAL:

- Fire retardant
- Low water absorbency
- Anti-fungal & bacterial
- High humidity resistance
- High temperature resistance
- High decontamination capability
- Salt fog resistance
- High strength

Complete with all ancillaries -

- Telescopic fibreglass poles up to 4.5 metres
- Supplied size: 9 x 9 metres
- Telescopic pole stakes
- Pegs
- Repair kit
- Carry Bag

NOTE: End user certification required for this product.



MULTI-TERRAIN

STANDARD OPTIONS:



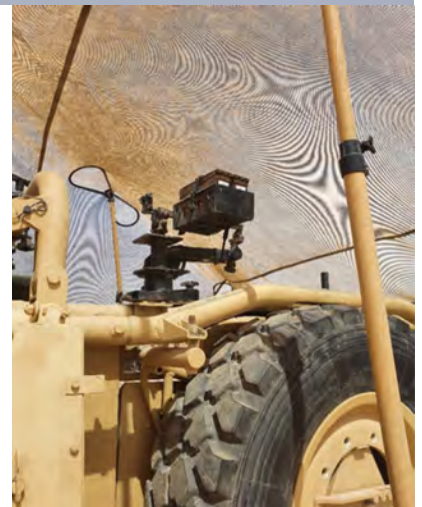
WOODLAND/
DESERT



DIGI WOODLAND/
WINTER/URBAN



ARCTIC/
WOODLAND



CODE	9 METRES X 9 METRES
NET034	WOODLAND / ARCTIC
NET035	WOODLAND / DESERT